



# RAZER WOLVERINE V3 PRO 8K PC

MASTER GUIDE

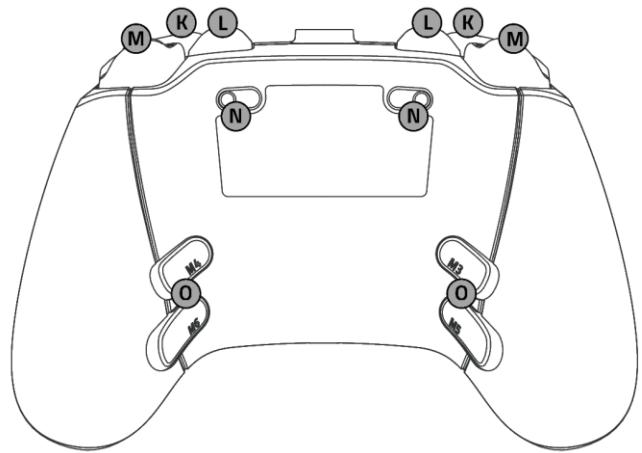
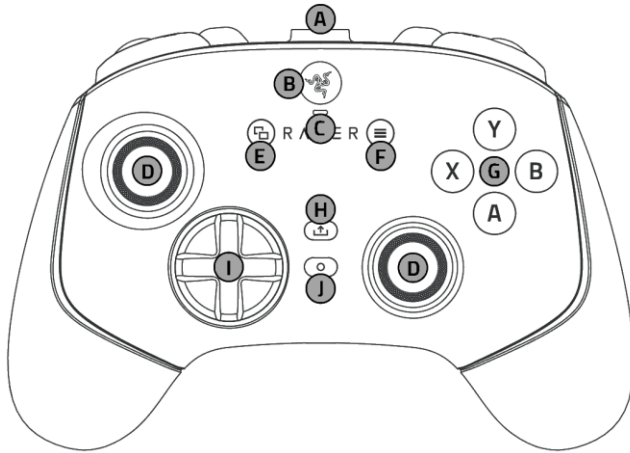
# CONTENTS

1. WHAT'S INSIDE.....	2
2. WHAT'S NEEDED.....	4
3. LET'S GET YOU COVERED.....	4
4. GETTING STARTED.....	5
5. USING THE CONTROLLER.....	6
6. CONFIGURING YOUR RAZER WOLVERINE V3 PRO 8K PC.....	9
7. SAFETY AND MAINTENANCE.....	24
8. LEGALESE.....	25

---

## 1. WHAT'S INSIDE

- Razer Wolverine V3 Pro 8K PC



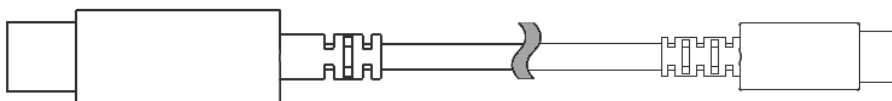
- A.** Type C port
- B.** Home button
- C.** Status indicator
- D.** TMR analog thumbsticks with replaceable caps
- E.** View button
- F.** Menu button
- G.** Razer Mecha-Tactile action buttons
- H.** Share button

- I.** Razer Mecha-Tactile 8-way floating D-pad
- J.** Function button
- K.** Bumpers (LB / RB)
- L.** Multi-function claw grip bumpers (M1 / M2)
- M.** Razer Pro HyperTriggers (LT / RT)
- N.** Trigger stop switches
- O.** Multi-function mouse click back buttons (M3 / M4 / M5 / M6)

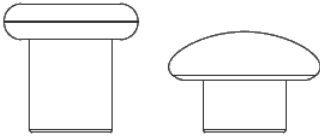
- Razer HyperSpeed Wireless 2.4GHz USB Type A dongle



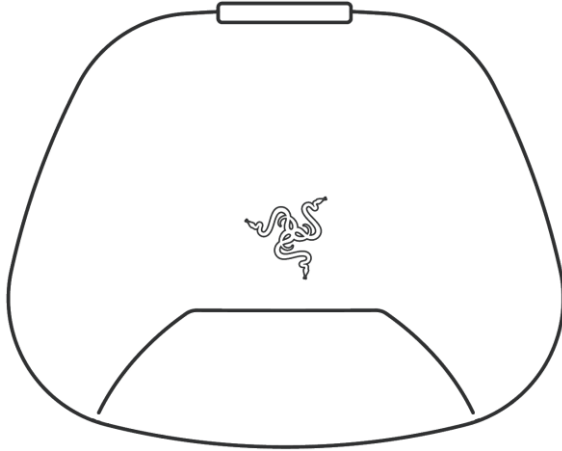
- USB Type A to USB Type C cable



- 2 Replacement thumbstick caps (tall concave / short convex)



- Carrying Case



- Important Product Information Guide

---

## 2. WHAT'S NEEDED

### PRODUCT REQUIREMENTS

- PC system with a USB Type A port

### RAZER SYNAPSE REQUIREMENTS

- Windows® 11 64-bit (or higher)
- Internet connection for app installation

---

## 3. LET'S GET YOU COVERED

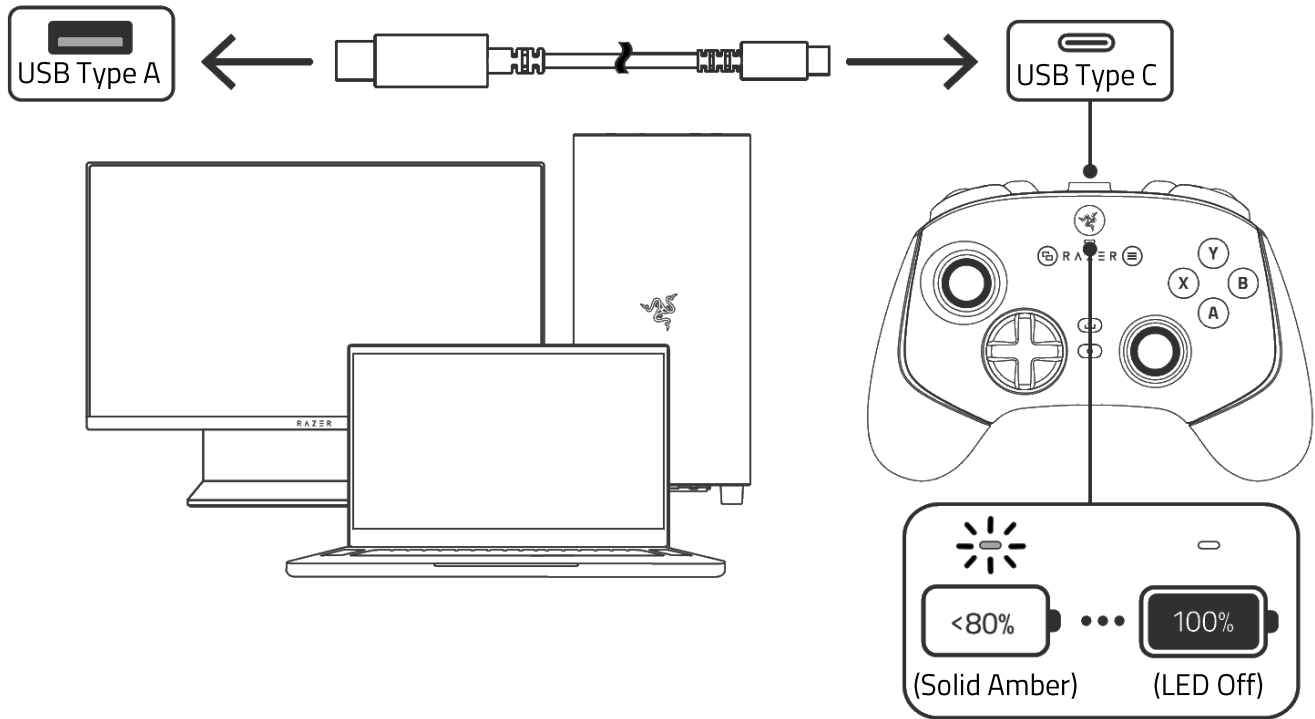


Register your product and score exclusive benefits  
[razerid.razer.com/warranty](https://razerid.razer.com/warranty)

Got a question? Ask the Razer Support Team at [support.razer.com](https://support.razer.com)

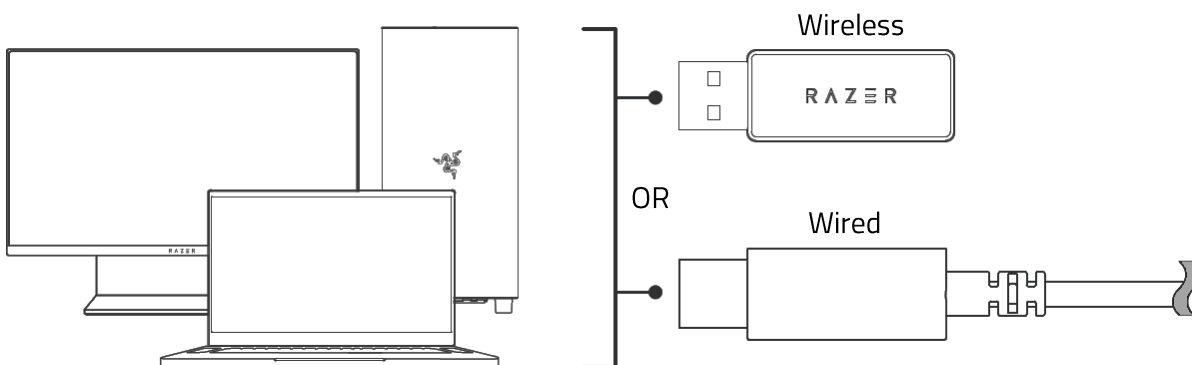
## 4. GETTING STARTED

### CHARGING THE CONTROLLER



- i** The battery status indicator will appear only when the controller is off, and just once when the applicable power level is reached. Only use the included USB Type A to USB Type C cable to charge the Razer Wolverine V3 Pro 8K PC. For best results, please fully charge the controller before using it for the first time. A depleted battery will be fully charged in approximately 3 hours.

### CONNECTING THE CONTROLLER

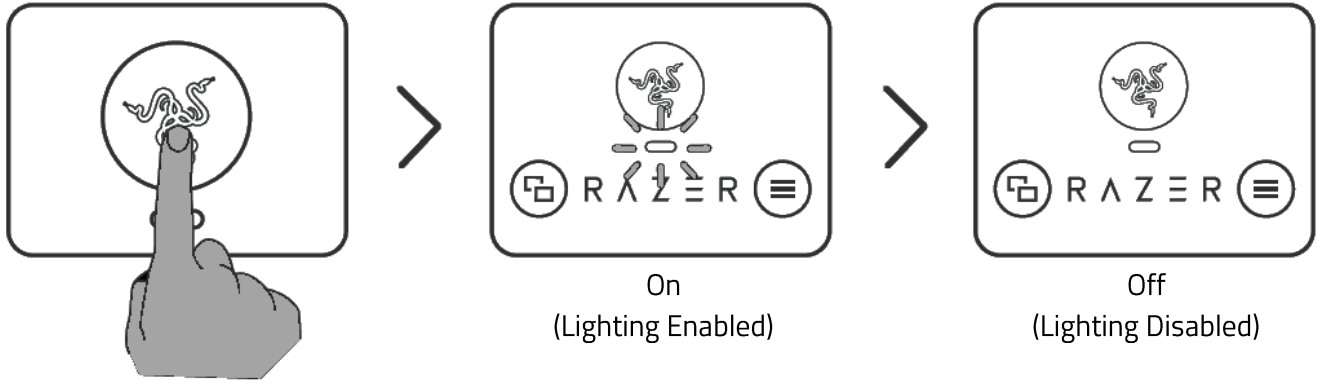


- i** The Razer Wolverine V3 Pro 8K PC prioritizes wired connection via cable but will automatically switch to the dongle if a wired connection is not detected. Install Razer Synapse when prompted or download the installer from [razer.com/synapse](https://www.razer.com/synapse).

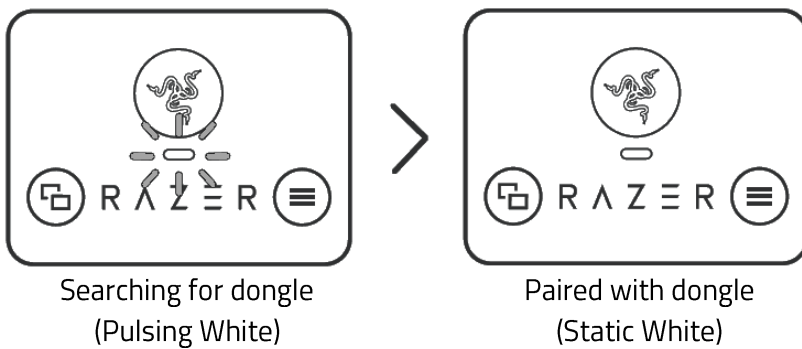
---

## 5. USING THE CONTROLLER

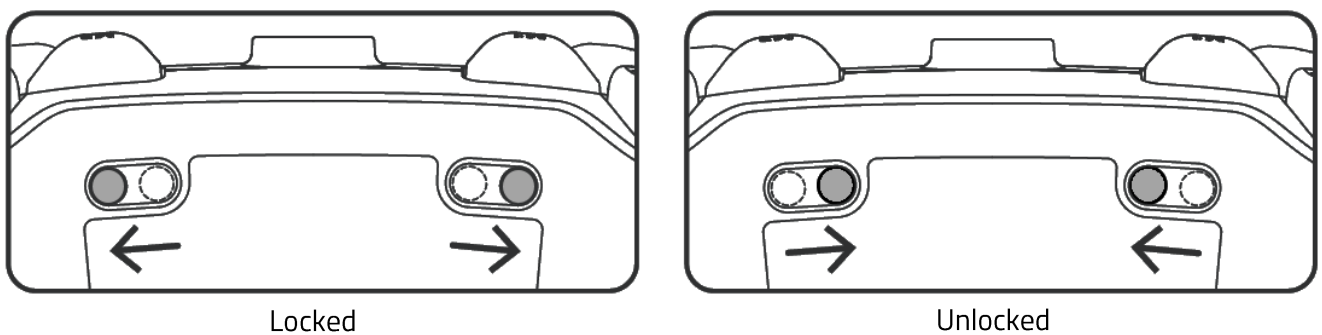
### POWER ON/OFF



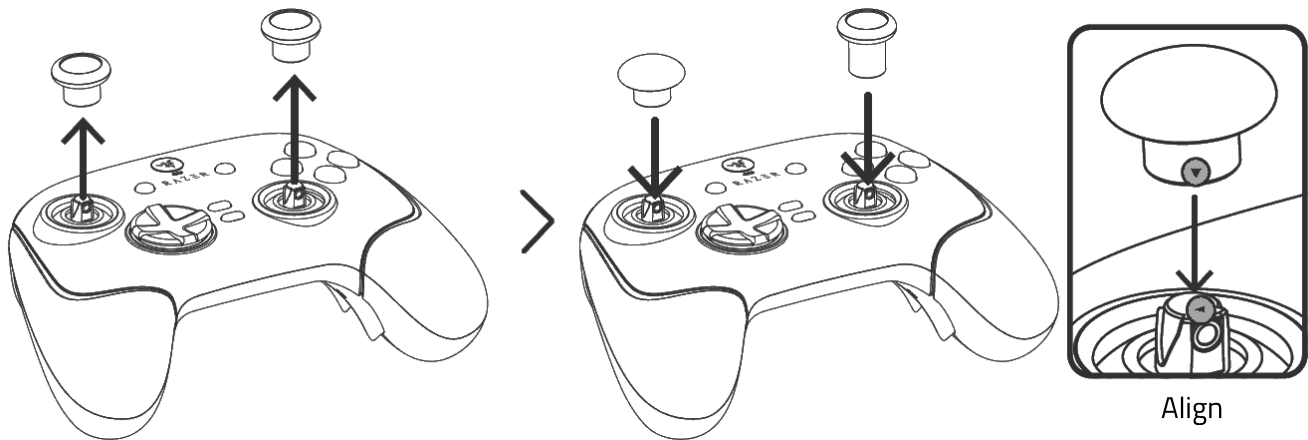
### WIRELESS CONNECTION NOTIFICATIONS

















### UTILIZING THE TRIGGER STOP SWITCHES



## CHANGING THE REPLACEABLE THUMBSTICK CAPS



## FUNCTION BUTTON COMMANDS

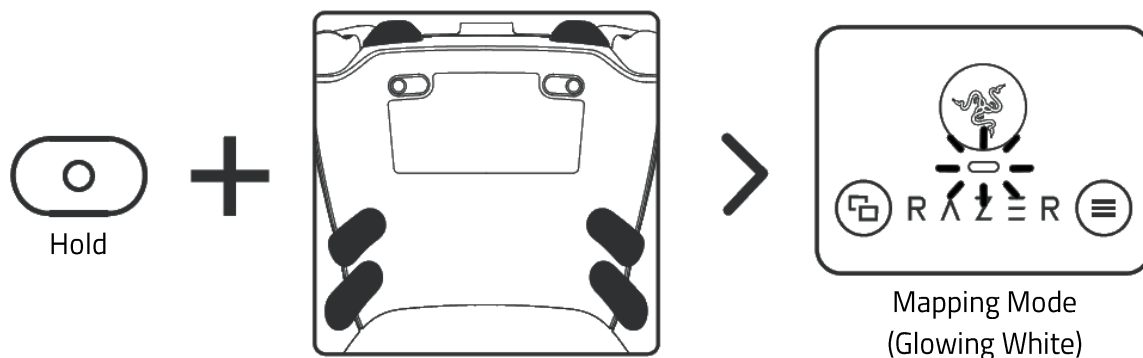
Input	Function
 +  Hold Press	Volume Up
 +  Hold Press	Volume Down
 +  Hold Press	Switch to Profile A
 +  Hold Press	Switch to Profile B
 +  Hold Press	Switch to Profile X
 +  Hold Press	Switch to Profile Y
 Press	Screenshot the active window*
 Hold	Start/Stop screen recording*

*\*remappable using Razer Synapse*

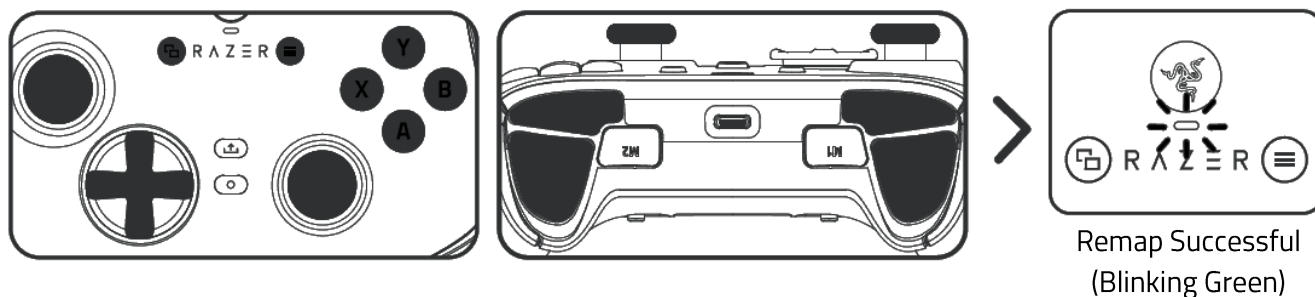
## REASSIGNING THE MULTI-FUNCTION (M1-M6) MAPPING

By default, the M1-M6 bumpers and buttons are unmapped. Use the steps below or Razer Synapse to remap them.

1. Hold down the Function button and the Multi-Function bumper/button you want to remap.

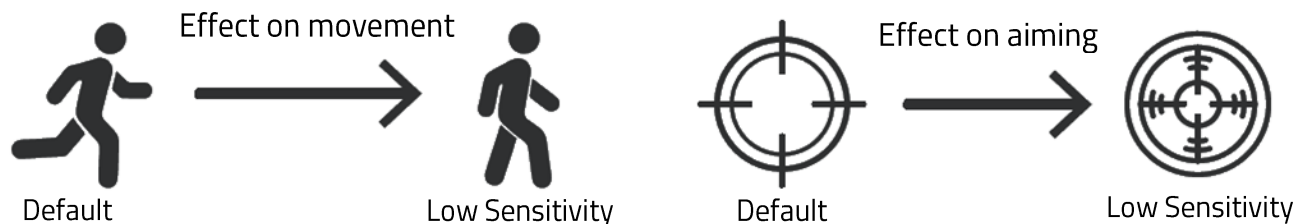


2. Press the button you want to assign to it.



## USING THE SENSITIVITY CLUTCH FUNCTION

Holding down the assigned button will lower the chosen analog stick's sensitivity by up to 50%.



**i** The sensitivity clutch function can be assigned and customized through Razer Synapse.

---

## 6. CONFIGURING YOUR RAZER WOLVERINE V3 PRO 8K PC

**i** *Disclaimer: This guide provides an overview of the New Razer Synapse app and may only partially cover some of the features of your device. The New Razer Synapse requires an Internet connection to install, update, access, and save cloud-based features. Registering for a Razer ID account is recommended but optional. All features listed here are subject to change based on the current version, connected device(s), and supported add-ons.*

### SYNAPSE

The Synapse tab is your default tab when you first launch Razer Synapse. Use the following buttons below to navigate the user interface:

— Minimize

Clicking this button will minimize the app to the taskbar while it runs in the background.

▢ Maximize

This button expands the browser window to fill the entire screen. To restore the window to its original size, click the maximize button again.

✕ Close

This button will close all relevant tabs and terminate the application completely.

< Previous Tab

Clicking this button will return you to the last tab you have visited.

> Next Tab

Clicking this button will move you to the next page if you've recently used the Previous Tab button.

↻ Refresh Tab

This button reloads the current page. Use this if a page isn't displaying correctly or you want to see the latest content.

⬇️ Download Update

If this button appears, that means there are changes to the app. Use this if a page isn't displaying correctly or you want to see the latest content.

## More

Clicking this button will open a pop-up so you can easily access your Devices, Modules, and Other Installed Apps tabs.

## Settings

Clicking this button will open the Settings tab, so you can quickly change the settings to this app.

## Profile

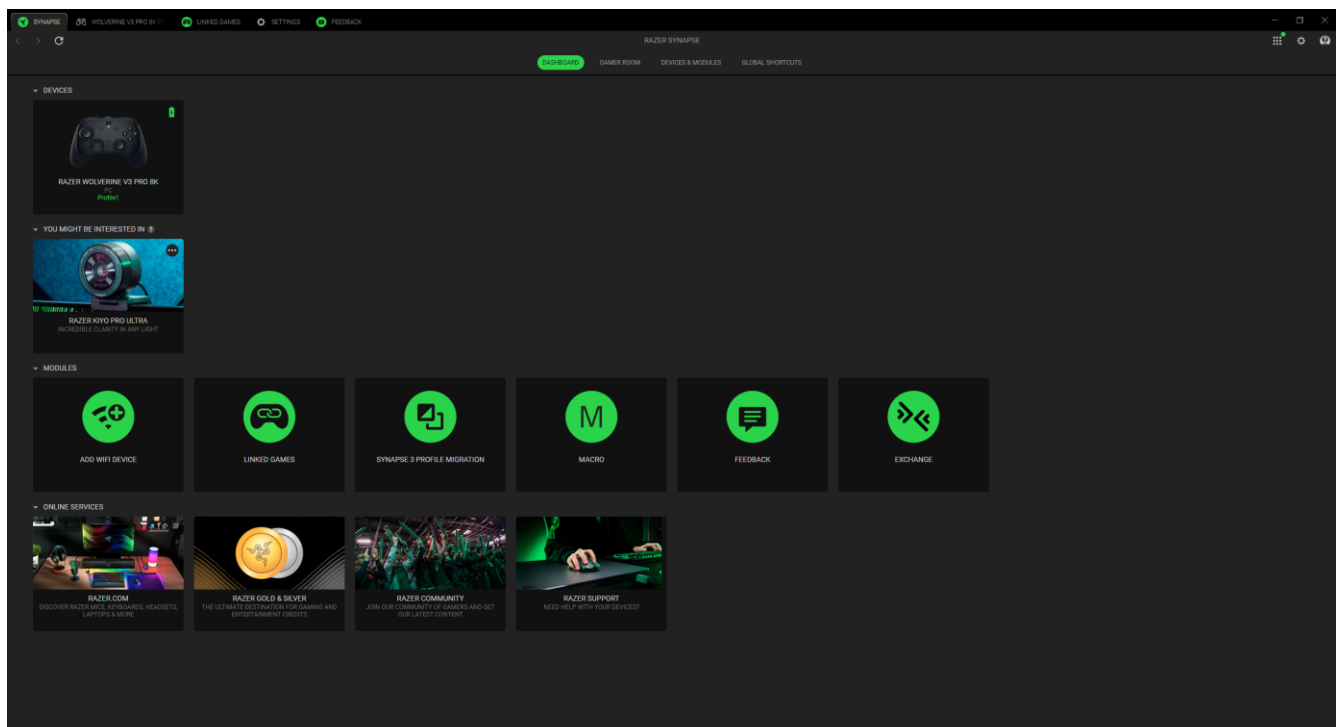
This button will open a pop-up to access the Log In, Feedback, Rate This Software, Add WiFi Device, and Exit options.

## Info

Hovering over this button will pop up an additional information about a feature or function.

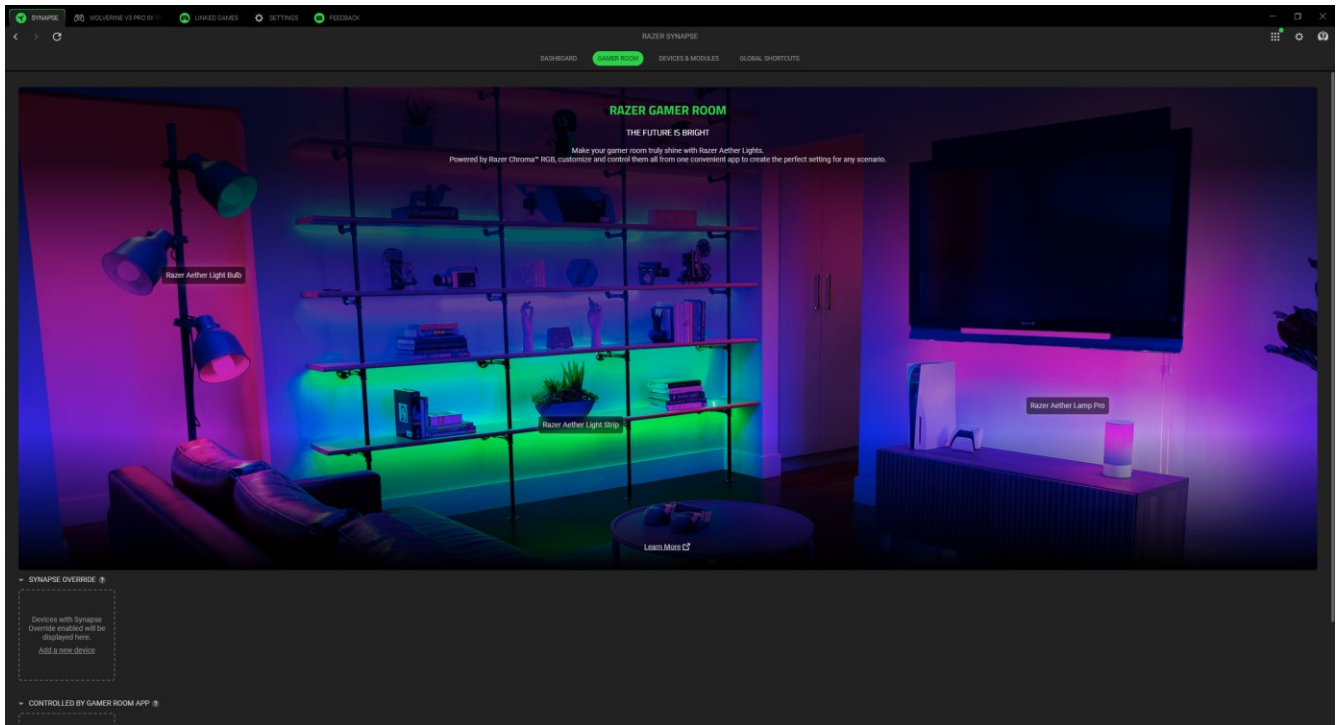
## Dashboard

The Dashboard subtab is an overview of your Razer Synapse, where you can access all your Razer devices, modules, and online services.



## Gamer Room

The Gamer Room subtab shows all devices with the Razer Aether Light feature. From here, you can view and manage your Gamer Room-supported devices.



### *Synapse Override*

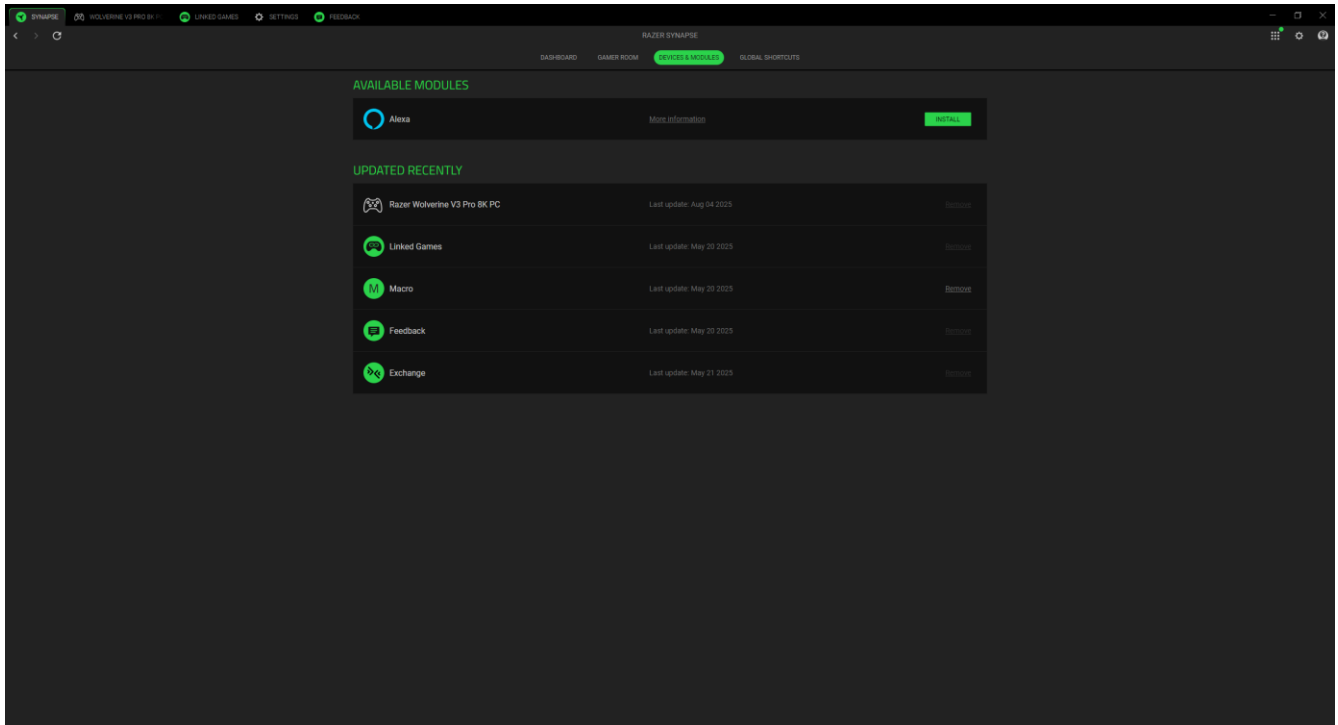
This section allows you to select and customize your device's lighting and make it react to Chroma-enabled games and Chroma Connect apps using Razer Synapse.

### *Controlled By Gamer Room App*

This section displays all supported devices controlled remotely by the Gamer Room app.

## Devices & Modules

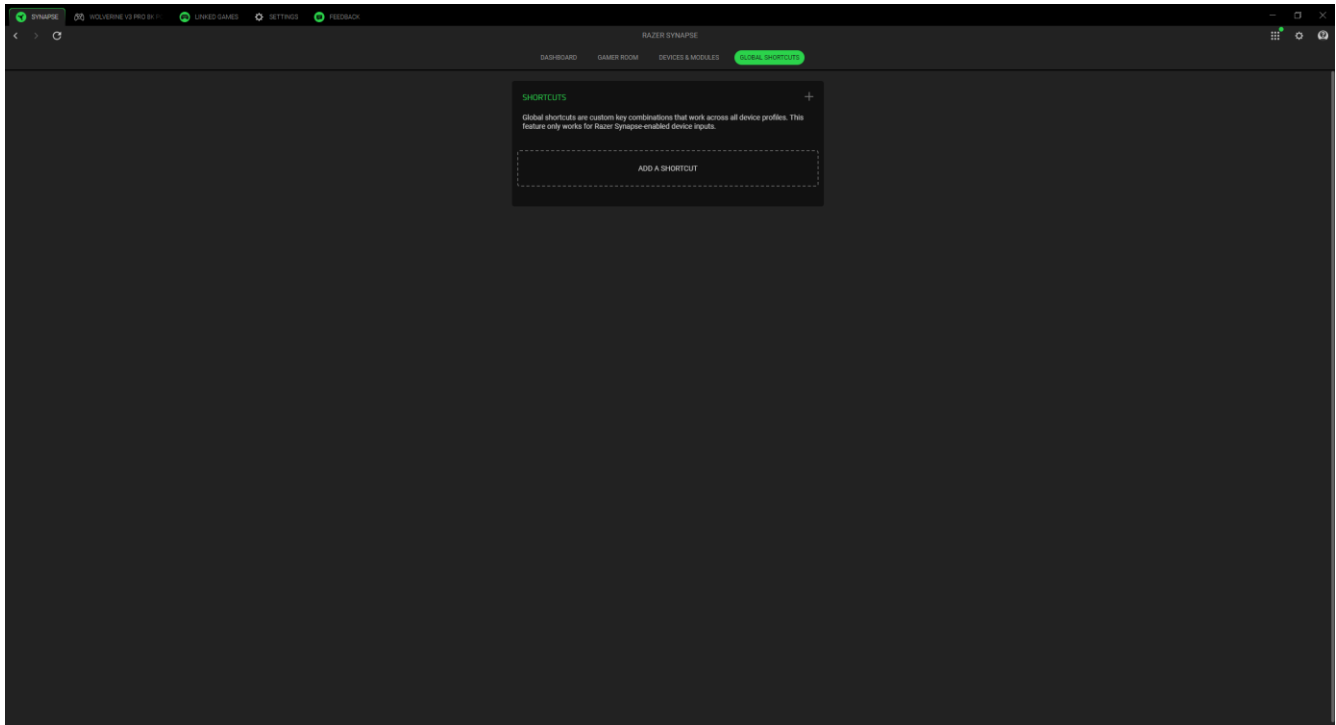
The Modules subtab displays all installed and available modules for installation.



## Global Shortcuts

Bind operations or Razer Synapse functions to custom key-combinations from any Razer Synapse-enabled device inputs, which apply across all device profiles.

 *Only Razer Synapse-enabled device inputs will be recognized.*



## WOLVERINE V3 PRO 8K PC

The Wolverine V3 Pro 8K PC tab is the main tab for your Razer controller. You can change your device settings from here, such as button assignments, thumbsticks deadzone, thumbsticks sensitivity, and polling rate. Any changes under this tab will be saved automatically to your local system and cloud storage. Use the following buttons below to access your profile options:

 Profiles Dropdown Bar

Clicking this dropdown bar will display all the profiles for this device so you can quickly change profiles.

 Miscellaneous

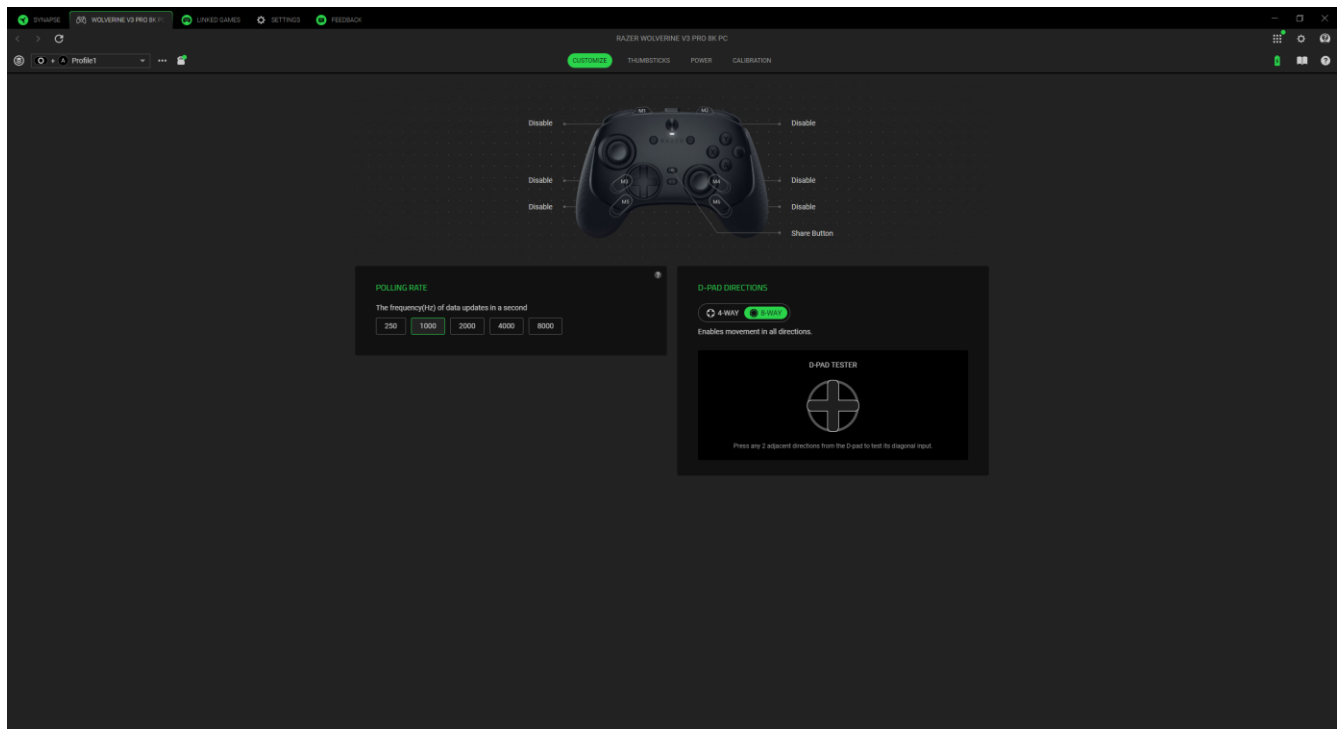
Clicking this button will open a pop-up with options related to your current profile.

 On-board Profiles

If your device supports on-board memory, clicking this button shows the remaining storage and allows you to transfer or change the saved profiles on your device.

## Customize

The Customize subtab is for modifying your controller's button assignments.



### *Profile*

Profile is a data storage system that keeps all your Razer device settings. By default, the profile name is based on your system's name.

### *Polling Rate*

You can switch between any of the polling rate options by selecting your desired polling rate. The higher the polling rate, the more frequently the computer receives information about your controller's status, effectively reducing input latency and improving your controller's responsiveness.

### *D-Pad Directions*

Choose whether to include diagonal directions to the D-pad's controls by selecting 8-way or restrict it to only adjacent directions using 4-way.

### *Multi-Function Assignment*

Upon selecting a customizable button, you may then change its function to one of the following:

#### Default

This option enables you to return the selected button to its original setting.

#### Keyboard Function

This option changes the button assignment into a keyboard function.

#### Controller

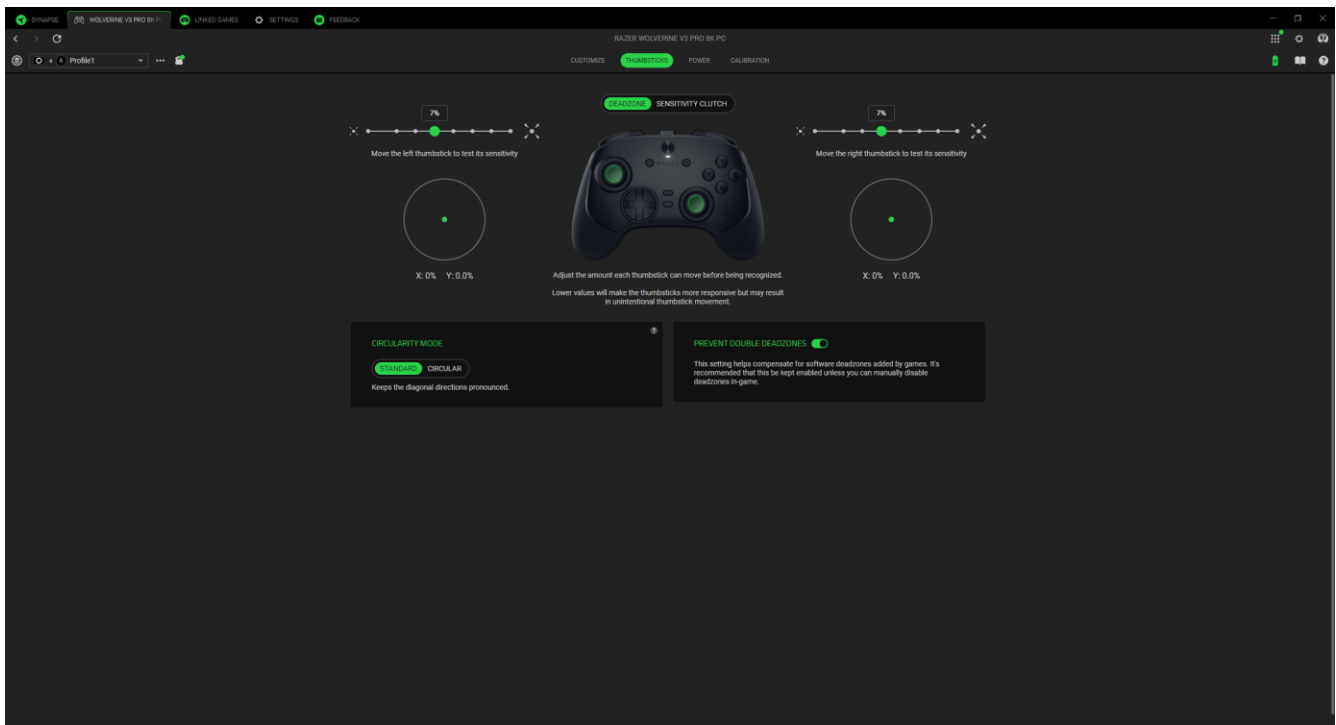
This option lets you customize the button by assigning it to any available function on the controller for a better gaming experience.

#### Disable

This option renders the assigned button unusable. Use Disable if you do not want to use the selected button or if it interferes with your gaming.

## Thumbsticks

The Thumbsticks subtab enables you to adjust the deadzones and clutch sensitivities of your Razer controller's analog sticks.



### *Deadzone*

Deadzones filter out minor movements from the analog sticks. Use the left and right sliders to adjust the sensitivity of each corresponding thumbstick. Lower values will make the thumbsticks more responsive, but they may also lead to unintended movements, known as “thumbstick drift.”

### *Circularity Mode*

Circularity measures how circular the movement of a thumbstick appears based on its physical and digital boundaries. Circularity Mode smooths this movement by optimizing its digital boundaries.

### *Prevent Double Deadzones*

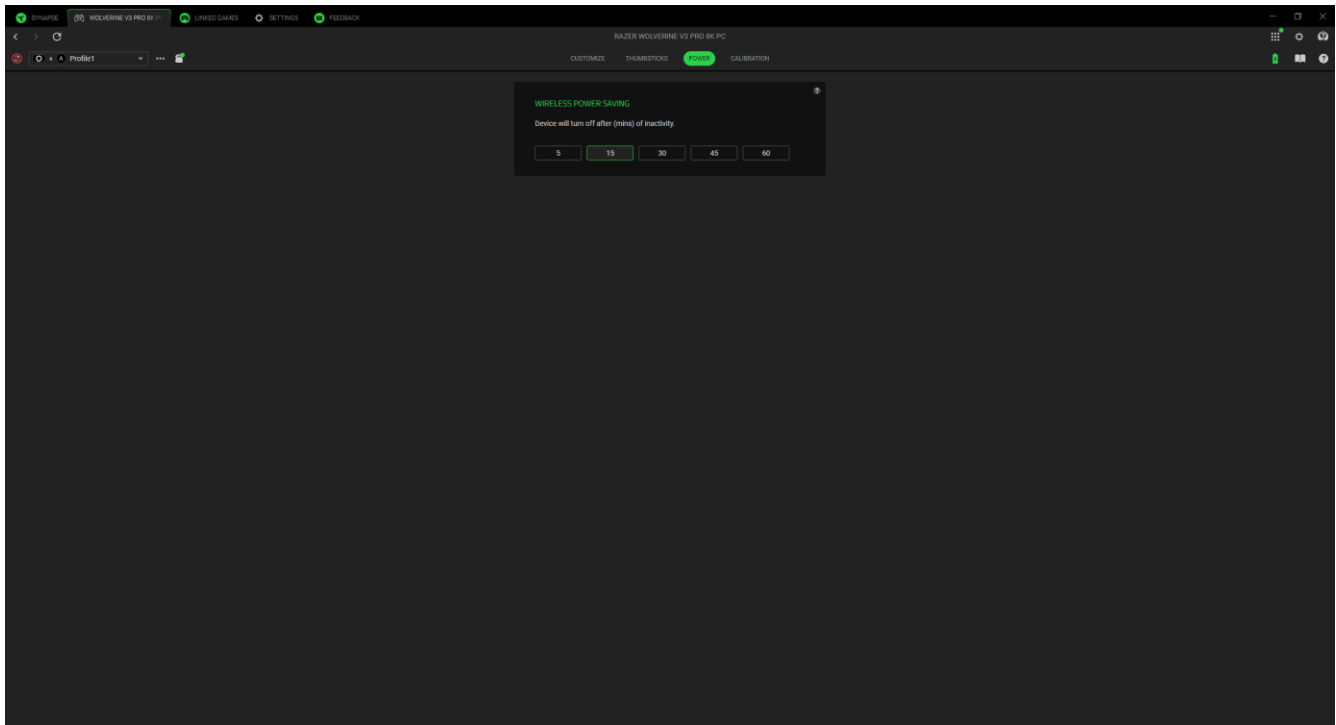
A double deadzone happens when a controller has a deadzone from its hardware or firmware, along with another deadzone added by certain games. This can make the controller less responsive and less precise, resulting from a larger effective deadzone than expected. Turning on the Prevent Double Deadzones feature makes sure that your controller's deadzone settings are kept the same and are not changed by the game.

### *Sensitivity Clutch*

Use the slider to limit the thumbstick movement via software while the assigned button is pressed.

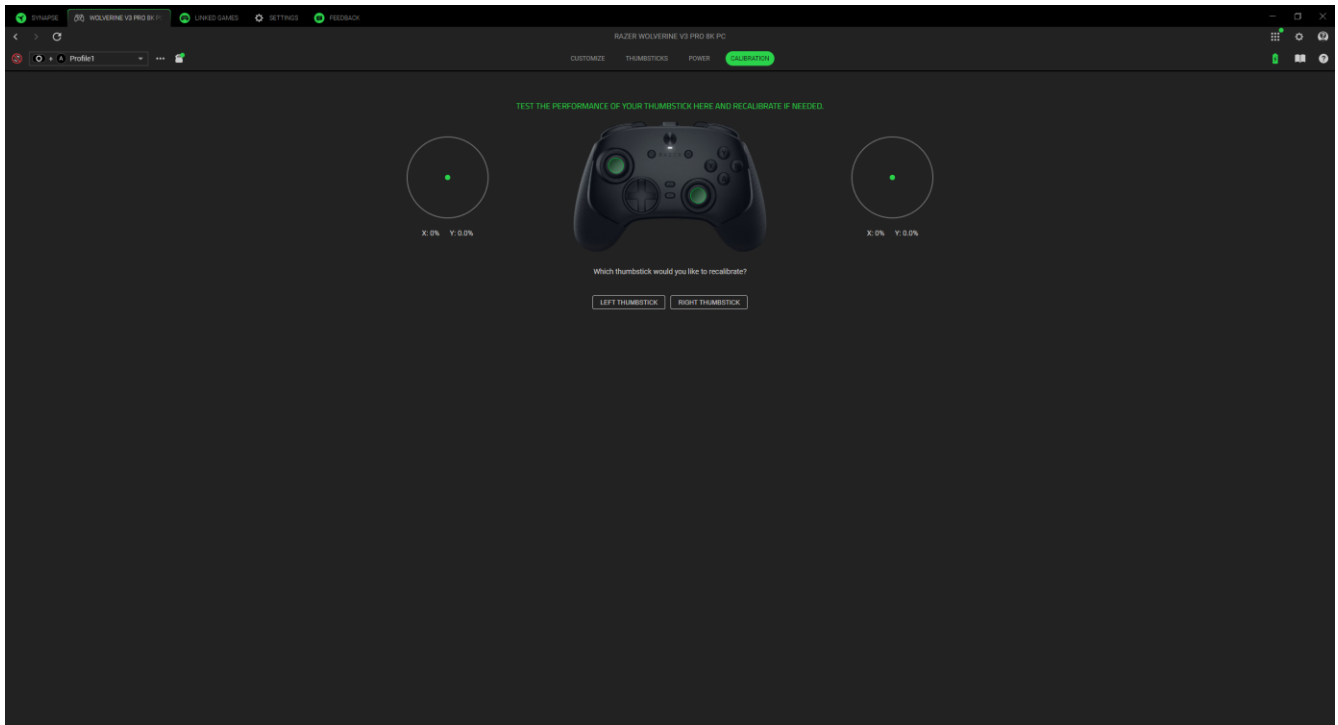
## Power

The Power subtab helps you manage your device's energy use when it's in Wireless Mode. You can set your device to go into sleep mode after it has been idle for a certain amount of time.



## Calibration

The Calibration subtab helps you test the performance of your thumbsticks. You can also recalibrate your thumbsticks here to potentially fix issues such as stick drift.

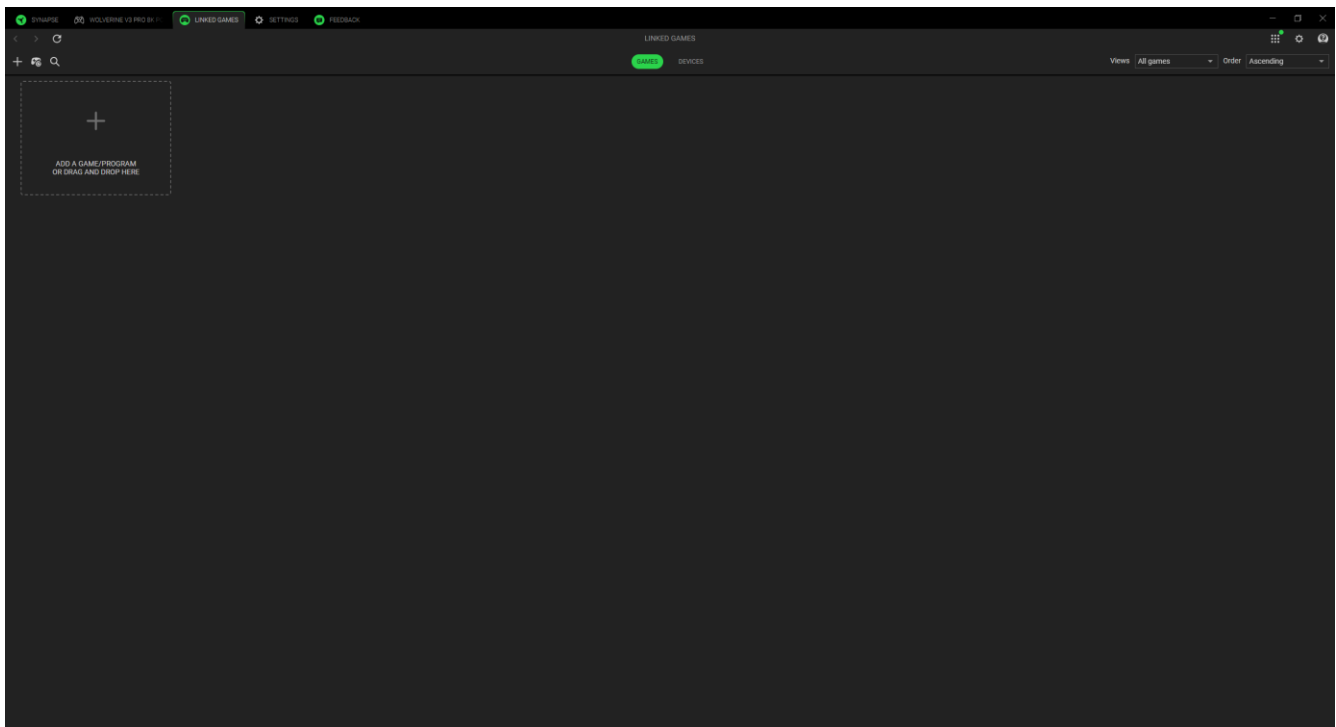


## LINKED GAMES

The Linked Games tab allows you to add apps, view peripherals linked to apps, or search for listed apps.

### Games

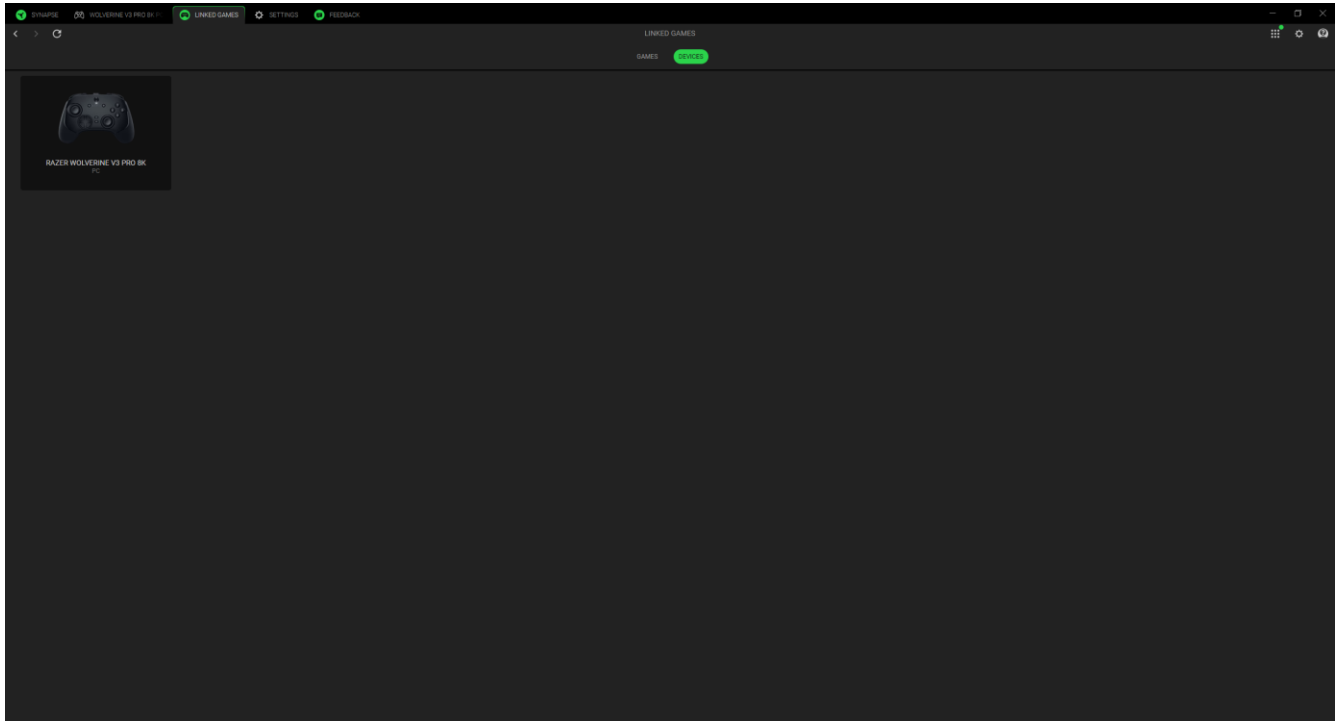
The Games subtab enables you to link apps to your peripherals. You can also sort apps based on alphabetical order, last played, or most played. Apps will still be listed here, even if not linked to a Razer device. To add an app that is not listed on the screen, you can use the Add button (+) to search for it manually or use the Scan button (🔍) to search for it automatically. Click the Search button (🔍) to look for a specific game or program from the list.



To link an app to your Razer device, click on it from the list and select a device and its profile. This will automatically set your device to the selected profile whenever you launch the app.

## Devices

The Devices subtab lets you view your peripherals and determine which apps are linked to them. By selecting a device, you can see a list of linked apps, add new apps, or remove linked apps. You can filter these apps by using the Views and Order dropdown list. To add an app not listed on your peripheral, you can drag and drop the executable file inside the box or use the Add button (+) to open the search window. While inside the search window, you can click the Refresh button (↻) to rescan installed apps, the Search button (🔍) to look for a specific game or program from the list, or the Browse link to search for the app manually.



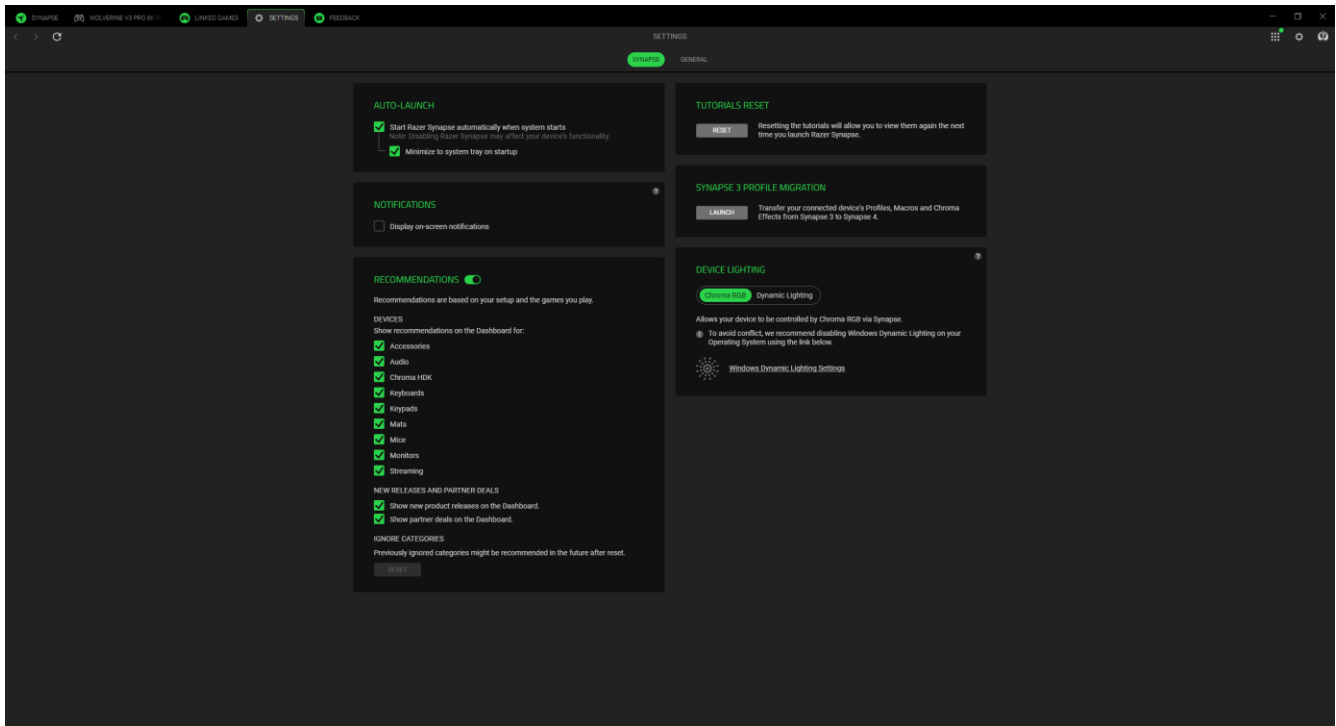
To link an app to your Razer device, click the tick box at the top left corner of the app while inside the search box. This will automatically set your device to the selected profile whenever you launch the app.

## SETTINGS

The Settings tab, accessible by clicking the ( ⚙ ) button, enables you to configure numerous options as listed below:

### Synapse

The Synapse subtab is where you can find options that are specific to the app.



### *Auto Launch*

The Auto Launch option allows you to configure the startup behavior the app.

### *Notifications*

The Notifications option allows the app to display on-screen notifications even if you run full-screen apps.

### *Recommendations*

Recommendations enable us to show the latest products and features on your Dashboard based on your installed devices and linked games.

### *Tutorials Reset*

Selecting the Reset button will reactivate all tutorials that help you acquaint yourself with Razer Synapse's features.

### *Profile Migration*

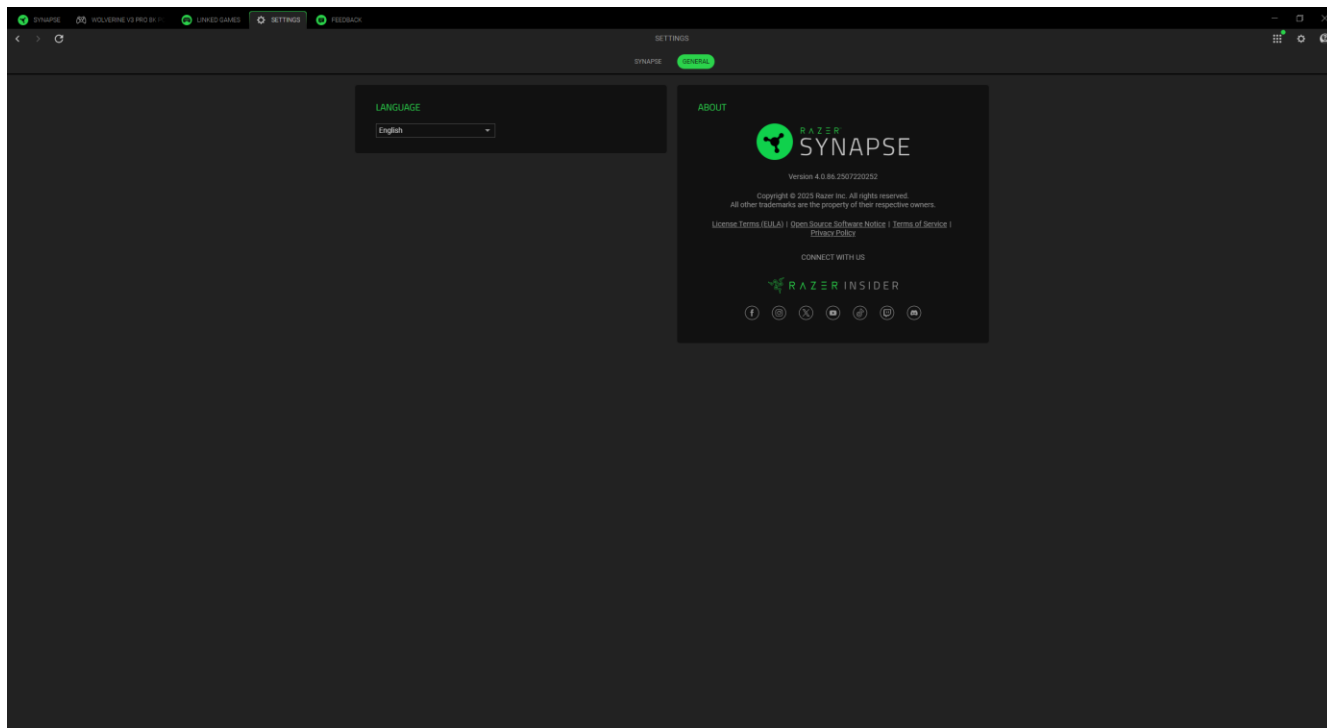
This function lets you transfer all your device's Profiles, Macros, and Chroma Effects from Synapse 3 to the new Synapse.

## Device Lighting

This option lets you choose which app will control the lighting effects on your device.

## General

The General subtab is the section where you can access miscellaneous options for your app, as well as find additional information about the software.



## Language

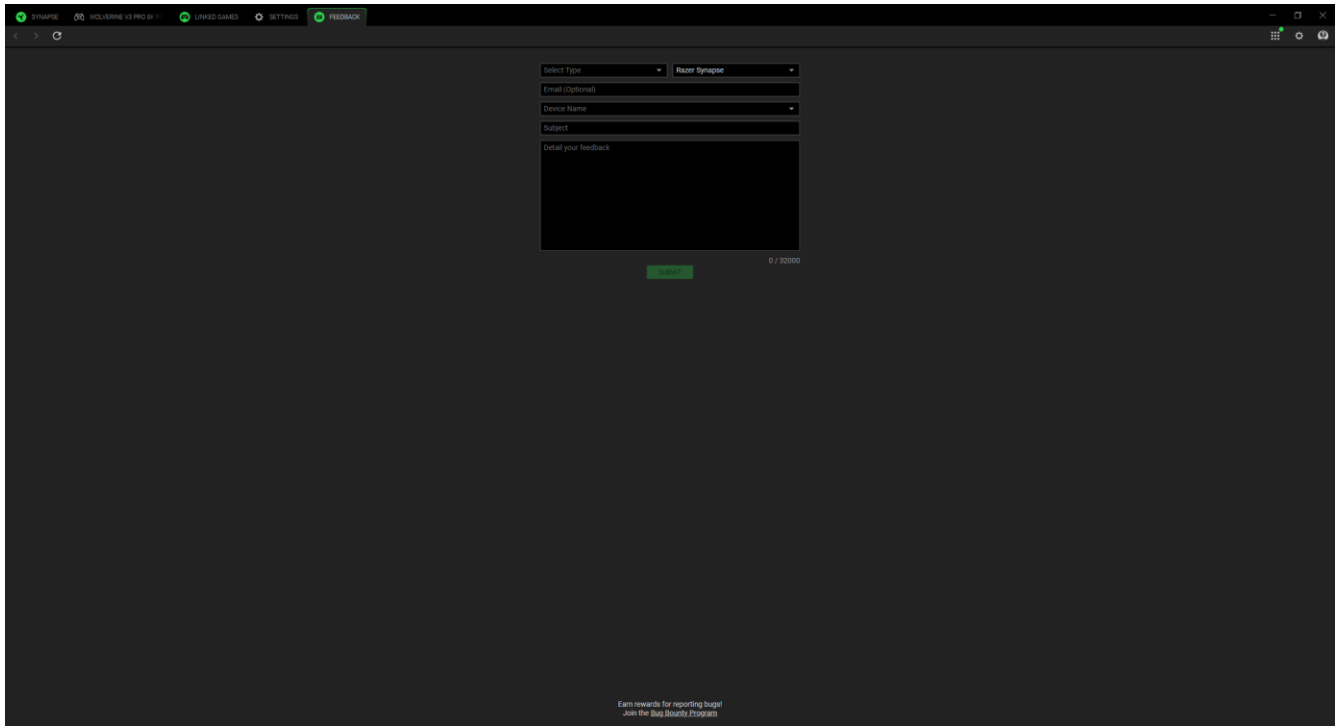
This option lets you change the display language of Razer Synapse.

## About

The About section shows the current software version, displays the copyright statement, and provides relevant links for Razer's terms of use. You may also use this option to access Razer's social communities quickly.

## FEEDBACK

Help us improve Razer Synapse by giving your comments, suggestions, and problems with the software. You can contact us directly using this tab and even earn rewards for reporting bugs.



The screenshot shows the Razer Synapse Feedback form interface. At the top, there is a navigation bar with tabs for SYNAPSE, ROLVERINE VE PRO 3A 11, LINKED GAMES, SETTINGS, and FEEDBACK. The FEEDBACK tab is active. The form includes a dropdown menu for 'Select Type' with 'Razer Synapse' selected. Below this are input fields for 'Email (Optional)', 'Device Name', and 'Subject'. A large text area is labeled 'Detail your feedback'. A green 'Submit' button is located at the bottom right of the form, with a character count '0 / 50000' next to it. At the bottom center of the page, there is a small text link: 'Earn rewards for reporting bugs! Join the Bug Bounty Program'.

---

## 7. SAFETY AND MAINTENANCE

### SAFETY GUIDELINES

#### SAFETY GUIDELINES

In order to achieve maximum safety while using the Razer Wolverine V3 Pro 8K PC, we suggest that you adopt the following guidelines:

Should you have trouble operating the device properly and troubleshooting does not work, unplug the device and contact the Razer hotline or go to [mysupport.razer.com](https://mysupport.razer.com) for support. Do not attempt to service or fix the device yourself at any time.

Do not take apart the device, and do not attempt to operate it under abnormal current loads. Doing so will void your warranty.

Keep the controller and all its parts and accessories out of the reach of small children to avoid accidents and/or injuries.

Keep the device and its components away from liquid, humidity or moisture. Operate the device and its components only within the specific temperature range of 0°C (32°F) to 40°C (104°F). Should the temperature exceed this range, unplug and switch off the device in order to let the temperature stabilize to an optimal level.

#### MAINTENANCE AND USE

The Razer Wolverine V3 Pro 8K PC requires minimum maintenance to keep it in optimum condition. Once a month, we recommend that you unplug the device and clean it using a soft cloth or cotton to prevent dirt buildup. Do not use soap or harsh cleaning agents.

---

## 8. LEGALESE

### **COPYRIGHT AND INTELLECTUAL PROPERTY INFORMATION**

©2025 Razer Inc. All rights reserved. Razer, the triple-headed snake logo, Razer logo, “For Gamers. By Gamers.” and “Razer Chroma” logo are trademarks or registered trademarks of Razer Inc. and/or affiliated companies in the United States or other countries. All other trademarks are the property of their respective owners.

Windows and the Windows logo are trademarks of the Microsoft group of companies.

Razer Inc. (“Razer”) may have copyright, trademarks, trade secrets, patents, patent applications, or other intellectual property rights (whether registered or unregistered) concerning the product in this guide. Furnishing of this guide does not give you a license to any such copyright, trademark, patent or other intellectual property right. The Razer Wolverine V3 Pro 8K PC (the “Product”) may differ from pictures whether on packaging or otherwise. Razer assumes no responsibility for such differences or for any errors that may appear. Information contained herein is subject to change without notice.

### **LIMITED PRODUCT WARRANTY**

For the latest and current terms of the Limited Product Warranty, please visit [razer.com/warranty](https://razer.com/warranty).

### **LIMITATION OF LIABILITY**

Razer shall in no event be liable for any lost profits, loss of information or data, special, incidental, indirect, punitive or consequential or incidental damages arising in any way out of distribution of, sale of, resale of, use of, or inability to use the Product. In no event shall Razer’s liability exceed the retail purchase price of the Product.

### **GENERAL**

These terms shall be governed by and construed under the laws of the jurisdiction in which the Product was purchased. If any term herein is held to be invalid or unenforceable, then such term (in so far as it is invalid or unenforceable) shall be given no effect and deemed to be excluded without invalidating any of the remaining terms. Razer reserves the right to amend any term at any time without notice.