



RAZER BLACKWIDOW V4 MINI HYPERSPEED

MASTER GUIDE

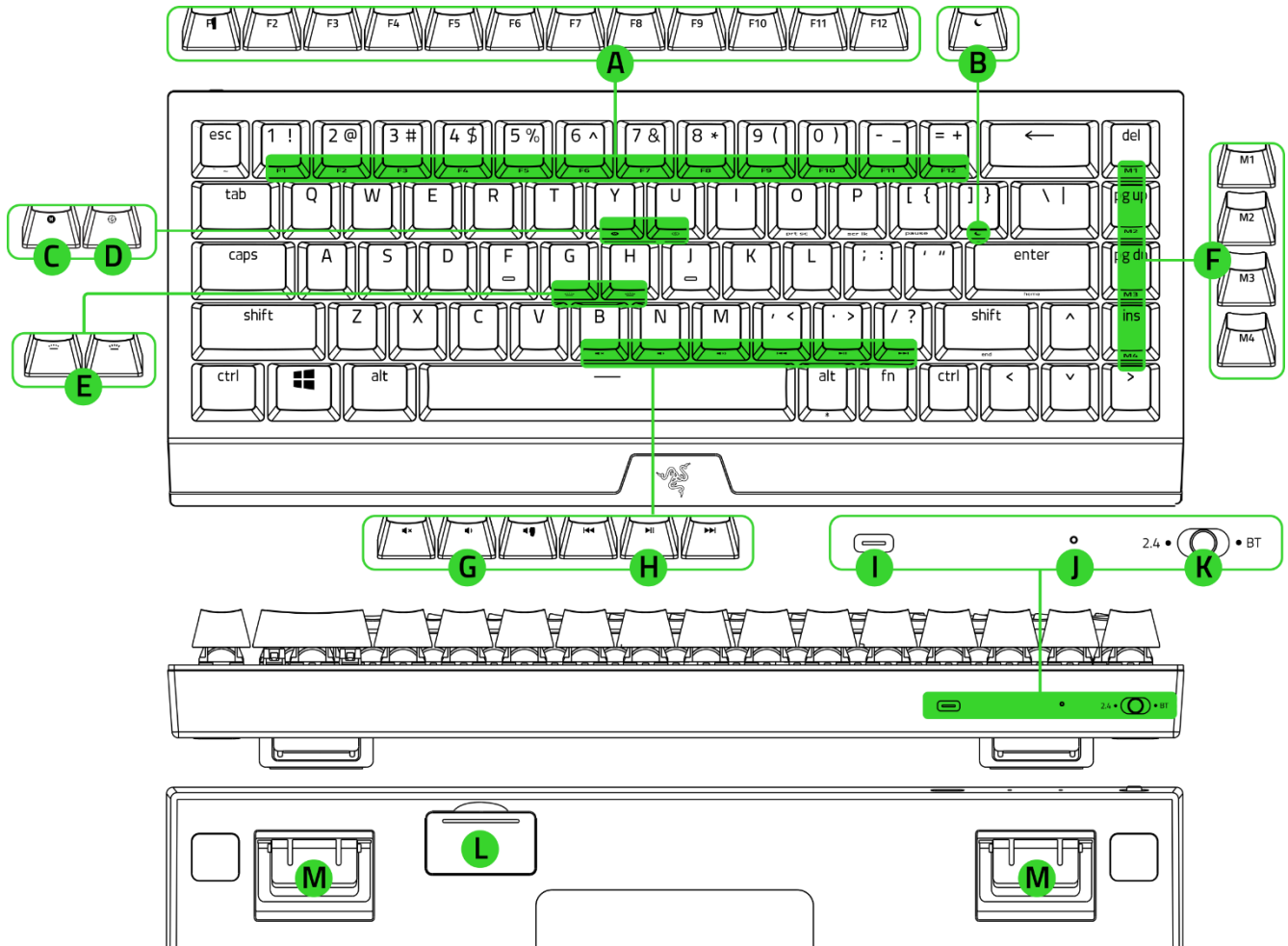
From enthusiast-level customization to ultra-low-latency performance, the complete package has never come this compact. Meet the **Razer BlackWidow V4 Mini HyperSpeed**—a wireless, hot-swappable 65% keyboard powered by Razer Chroma RGB, complete with stealth pudding keycaps for maximum illumination.

CONTENTS

1. WHAT'S INSIDE.....	3
2. WHAT'S NEEDED.....	4
3. LET'S GET YOU COVERED.....	5
4. TECHNICAL SPECIFICATIONS.....	5
5. GETTING STARTED.....	6
6. USING YOUR RAZER BLACKWIDOW V4 MINI HYPERSPEED.....	10
7. CONFIGURING YOUR RAZER BLACKWIDOW V4 MINI HYPERSPEED VIA RAZER SYNAPSE.....	13
8. SAFETY AND MAINTENANCE.....	29
9. LEGALESE.....	31

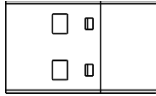
1. WHAT'S INSIDE

- Razer BlackWidow V4 Mini HyperSpeed

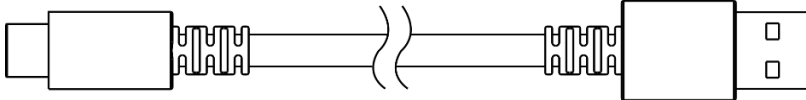


- A. Function keys
- B. Sleep mode key
- C. On-the-fly macro record key
- D. Gaming mode key
- E. Backlight control keys
- F. Macro keys
- G. Volume control keys
- H. Media keys
- I. USB Type C port
- J. Power indicator
- K. Mode switch (2.4 / OFF / BT)
- L. Wireless dongle compartment
- M. Kickstand

- Razer HyperSpeed Wireless Dongle



- USB Type A to Type C cable



- 2-in-1 keycap and switch puller



- Important Product Information Guide

2. WHAT'S NEEDED

PRODUCT REQUIREMENTS

- USB Type A port or Bluetooth connectivity

RAZER SYNAPSE REQUIREMENTS

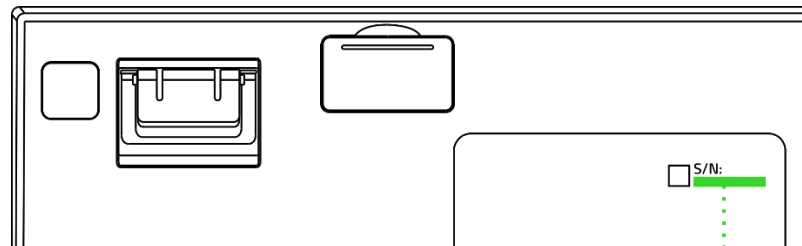
- Windows® 10 64-bit (or higher)
- Internet connection for software installation

3. LET'S GET YOU COVERED



Register your product and score exclusive benefits

razerid.razer.com/warranty



Your product's serial number can be found here.

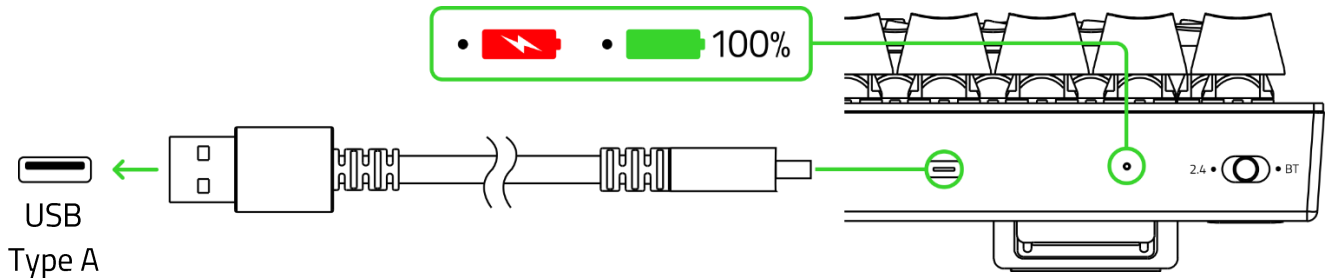
4. TECHNICAL SPECIFICATIONS

- Switch type: Razer™ Mechanical Switches Gen-3 (Tactile)
- Key feel: Tactile and Quiet
- Size: 65%
- Lighting: Razer™ Chroma RGB
- Wrist rest: None
- Onboard memory: Hybrid on-board storage for up to 5 profiles
- Media keys: Secondary keys
- Connectivity: Razer™ HyperSpeed Wireless (2.4 GHz), Bluetooth 5.0, or Type C
- Keycaps: Razer Phantom Keycaps
- Razer™ Synapse enabled
- 5052 Aluminum Alloy Top Case
- Plastic bottom case
- PCB & case sound dampening foams included
- Lubricated plate-mounted stabilizers
- N-key rollover & Anti-ghosting
- 100-million keystroke lifespan

5. GETTING STARTED

CHARGING YOUR RAZER BLACKWIDOW V4 MINI HYPERSPEED

Connect your keyboard to a powered USB port using the Type A to Type C cable to charge your keyboard. While charging, the power indicator will be in solid red; and then turn solid green when fully charged.



i For best results, fully charge your keyboard before using it for the first time. It takes approximately 2 hours to charge your keyboard fully. You may continue using the keyboard while plugged in.

UNDERSTANDING THE POWER INDICATOR

When your keyboard is not charging, the power indicator will only briefly display its battery status.

Mode	Charged	Low	Critical*
2.4 / BT	Green	Yellow	Blinking Red
OFF	None		

*Critical status indicates that the keyboard's battery is less than 3%. This lighting sequence will repeat until the battery is drained or the keyboard is charging.

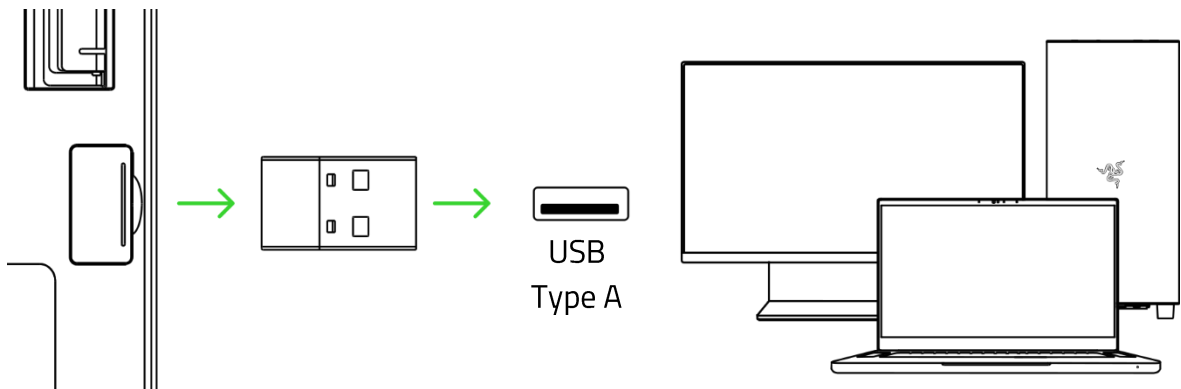
CONNECTING YOUR RAZER BLACKWIDOW V4 MINI HYPERSPEED

A. Razer HyperSpeed Wireless mode (2.4 GHz)

1. Set the mode switch to 2.4.



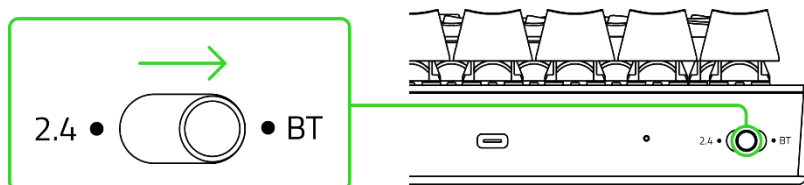
2. Remove the wireless USB dongle from the dongle compartment and connect it to your computer.



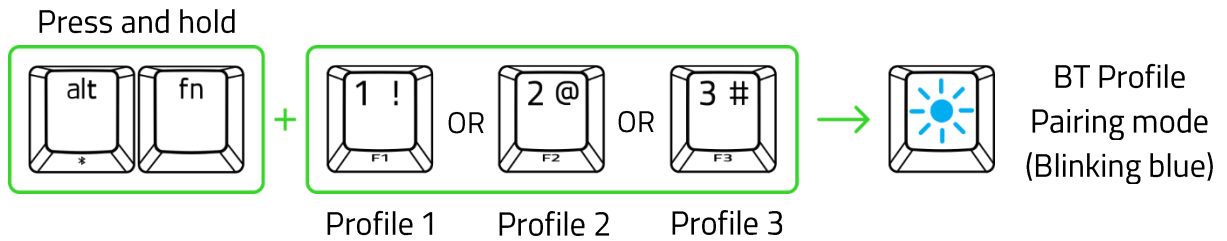
Your keyboard is now ready to use in Razer HyperSpeed Wireless mode (2.4 GHz).

B. BT mode

1. Set the mode switch to BT.

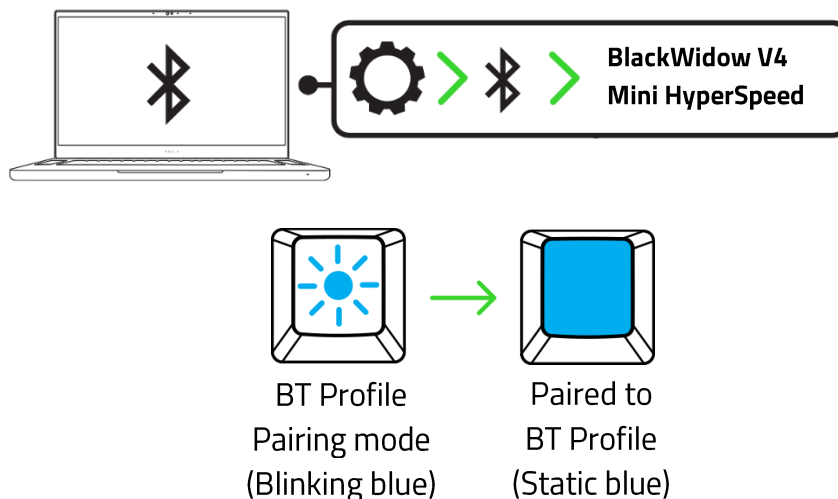


2. Your Razer BlackWidow V4 Mini HyperSpeed can pair up to 3 devices using its Bluetooth profiles. To activate pairing mode, hold down the "fn" and "alt" keys, and then hold down either the 1, 2, or 3 keys. The held number will blink blue.



i Your Razer BlackWidow V4 Mini HyperSpeed can pair up to 3 devices using its Bluetooth profiles.

3. Enable Bluetooth on your device and select **BlackWidow V4 Mini HyperSpeed** from the list of devices found. The device will pair with your keyboard and the connection will be registered to that number.

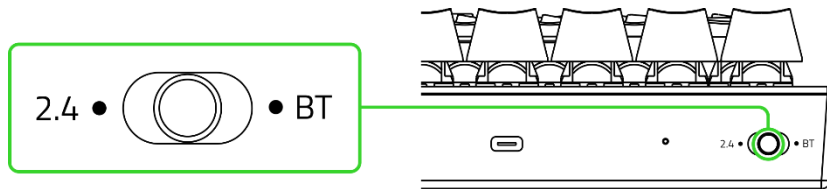


i Your keyboard will reconnect to the last paired device after it has been powered on again.

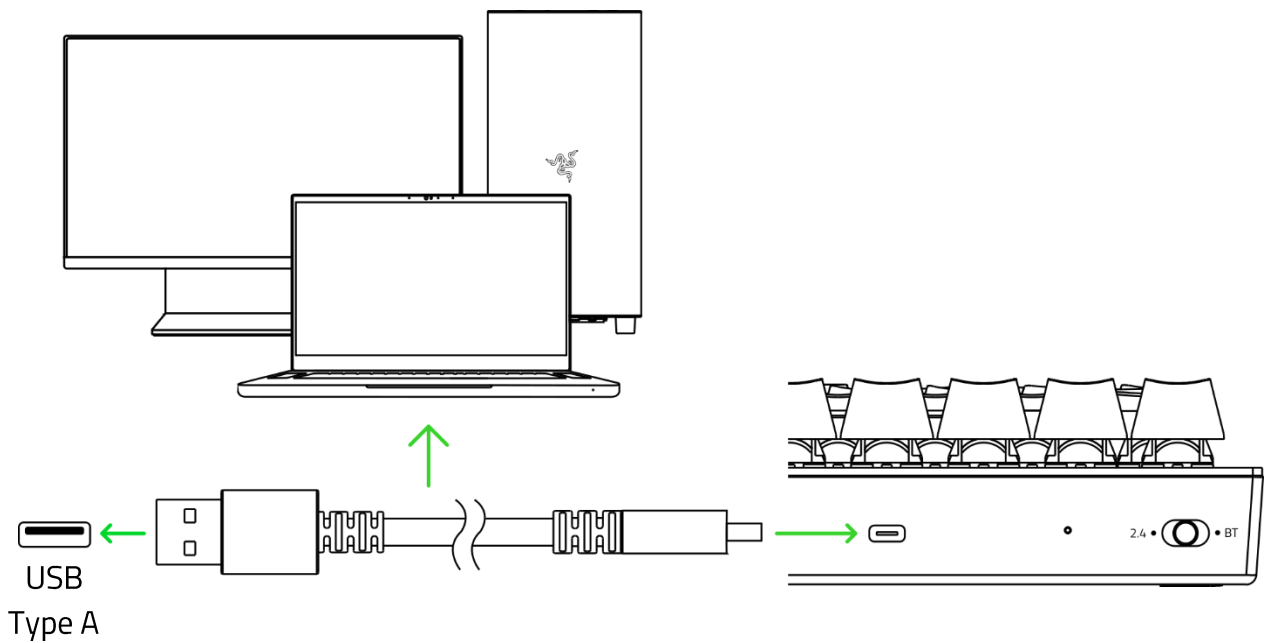
Your keyboard is now ready to use in BT mode.

C. Wired mode

1. Set the mode switch to OFF.



2. Connect your Razer device to the USB port of your computer.



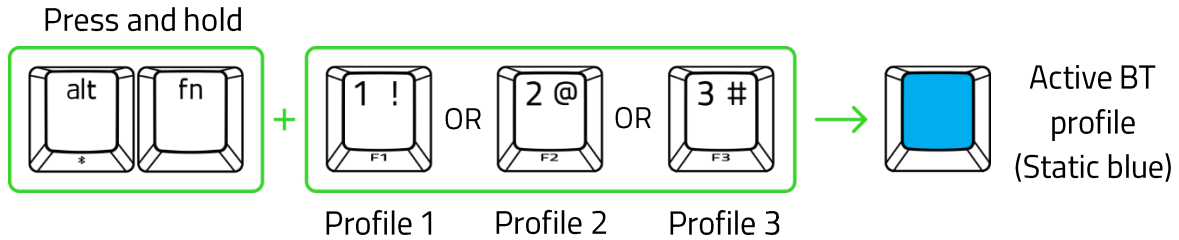
i Install Razer Synapse when prompted, or download the installer from razer.com/synapse.

Your keyboard is now ready to use in wired mode.

6. USING YOUR RAZER BLACKWIDOW V4 MINI HYPERSPEED

SWITCHING BETWEEN PAIRED DEVICES (BT MODE)

To switch between paired devices, hold down the “fn” and “alt” keys, and then press the number key that corresponds with the device. The selected number will temporarily change to static blue.



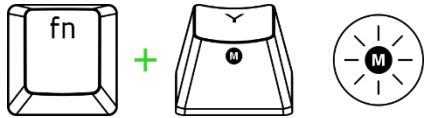
i To view the current profile number, hold down the fn key, and then press and hold the alt key. The numeric key corresponding to the current profile will light up.

KEYBOARD FUNCTIONS

Pressing the “fn” modifier key plus keys with 2 functions will activate their secondary functions.

Hotkey	Description
	Disable the Windows Key, Menu/Apps Key, alt + Tab, and alt + F4 functions (customizable via Razer Synapse). The Gaming mode key will light up when it is active.
	Mute (🔇), decrease (🔊) and increase (🔊) the audio output.
	The media keys allow you to play/pause (▶) the current track, return to the previous track (◀◀) or skip to the next track (▶▶).
	Decrease (🔼) or increase (🔽) the keyboard LED's brightness.
	Suspend all operating system activities and conserve power.

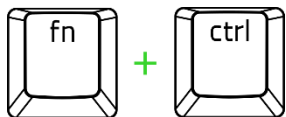
ON-THE-FLY MACRO RECORDING










Follow these steps to create an OTF Macro Recording:

1. Press the key combination to start recording.
2. Type the keys you want to record.
3. Press the key combination to stop the recording or the ESC key to cancel recording.
4. Wait for the OTF Macro record key to start blinking.
5. Press the desired Macro key where you want to save your recording.


CHROMA EFFECTS



Hotkey	Chroma effect
fn + ctrl + 1	 Off
fn + ctrl + 2	 Static*
fn + ctrl + 3	 Breathing*
fn + ctrl + 4	 Spectrum cycling
fn + ctrl + 5	 Wave**
fn + ctrl + 6	 Reactive*
fn + ctrl + 7	 Starlight*

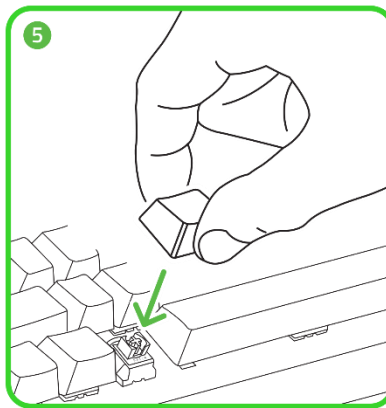
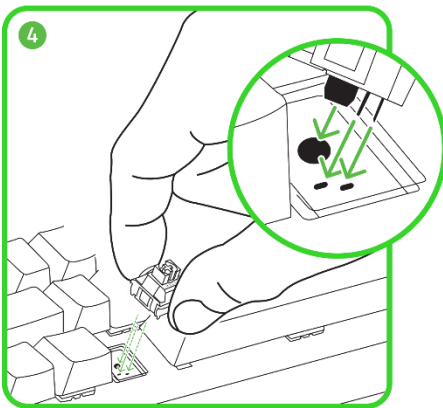
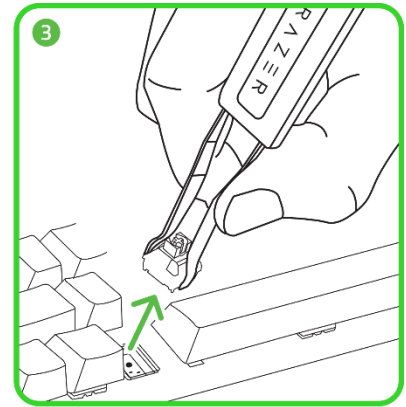
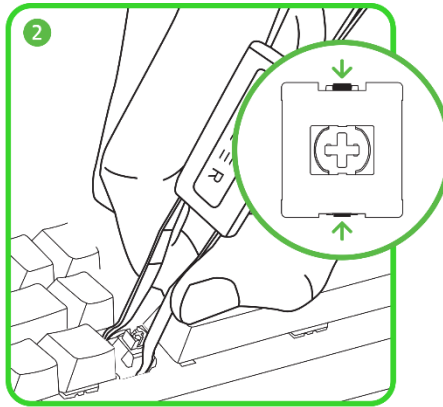
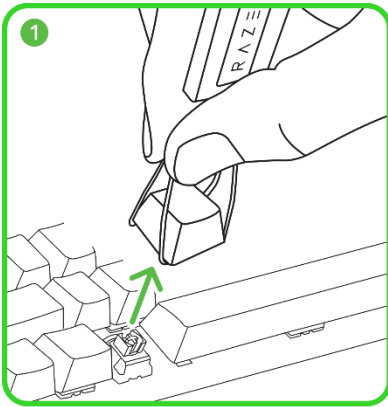
*Press again to change color

**Press again to change direction

 Use the Razer Synapse app to customize your keyboard's lighting effects further and access other features available on your keyboard.

CHANGING SWITCHES

- i** It's recommended to use antistatic/ESD bands or gloves while working with the keyboard's PCB (such as switch replacement). Always unplug and switch off the keyboard before swapping key switches. Replacement switches are sold separately.



7. CONFIGURING YOUR RAZER BLACKWIDOW V4 MINI HYPERSPEED VIA RAZER SYNAPSE

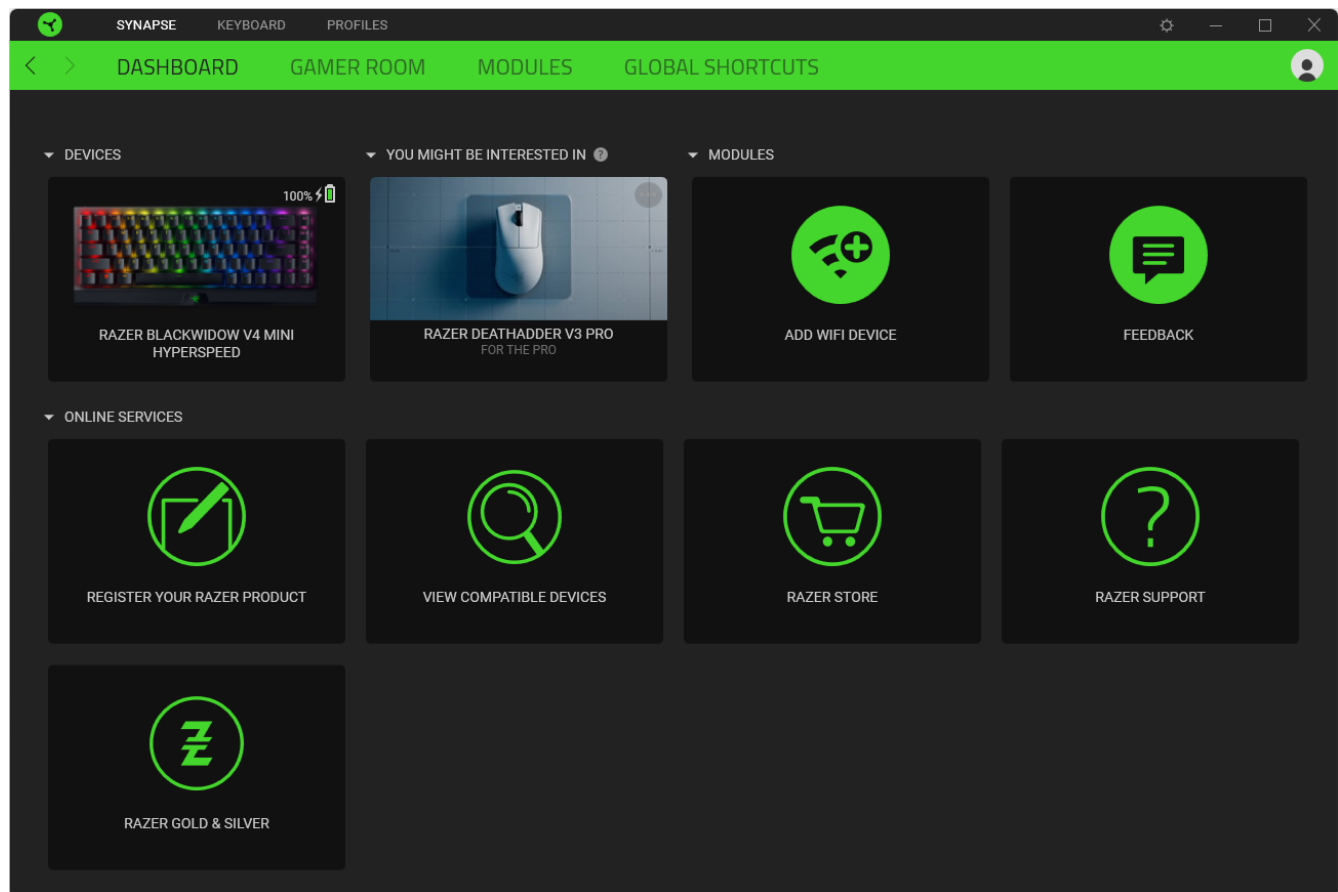
i *Internet connection is required for installation, updates, and cloud-based features. Registering for a Razer ID account is recommended but optional. All listed features are subject to change based on the current software version, the connected device(s), and supported apps and software.*

SYNAPSE TAB

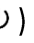
The Synapse tab is your default tab when you first launch Razer Synapse. This tab allows you to navigate the Dashboard subtab.

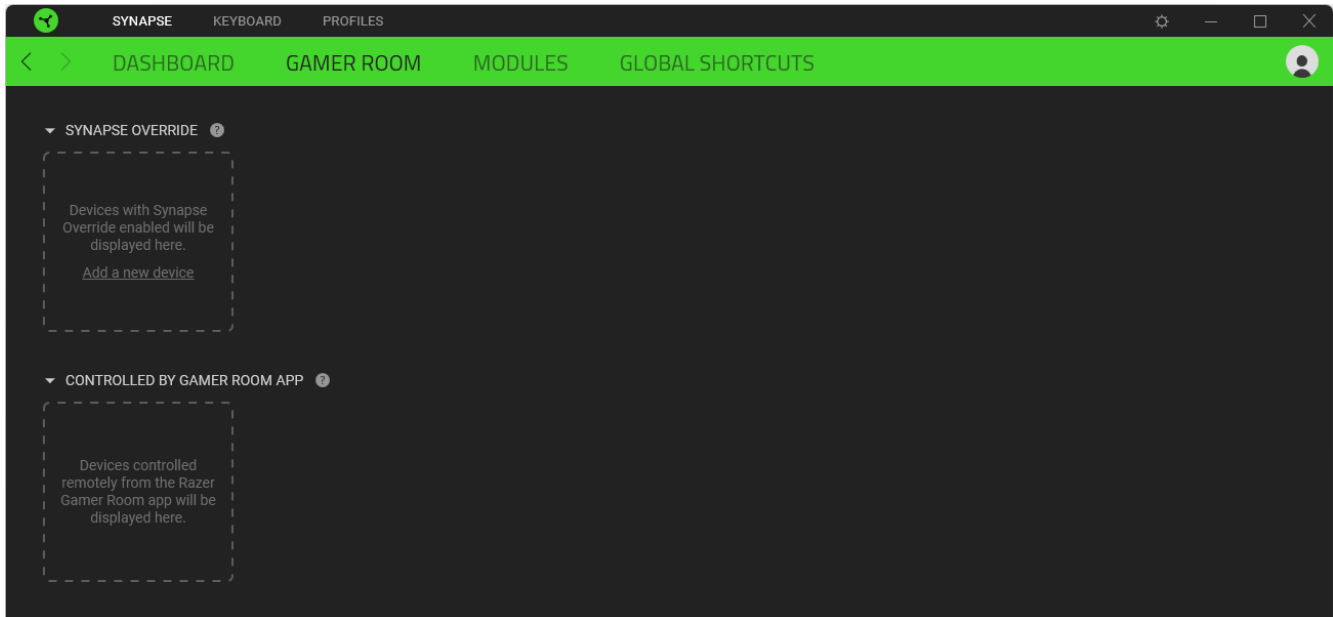
Dashboard

The Dashboard subtab is an overview of your Razer Synapse, where you can access all your Razer devices, hardware recommendations, modules, and online services.



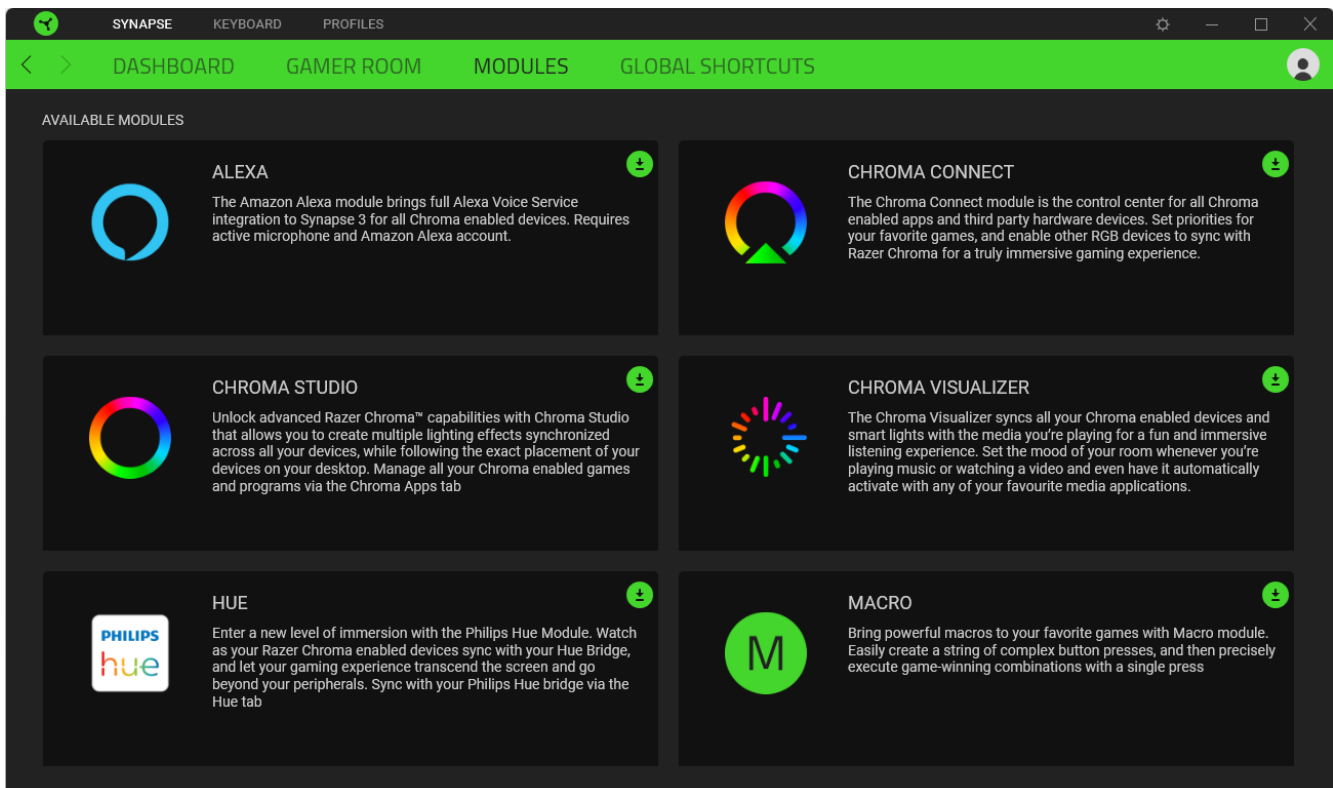
Gamer Room

Use the Gamer Room subtab to manage which devices are directly controlled by Razer Synapse and the Razer Gamer Room app. You can power on or off any Razer Gamer Room device using the Power on/off button () or switch app control by clicking on any device and toggling Synapse Override.



Modules

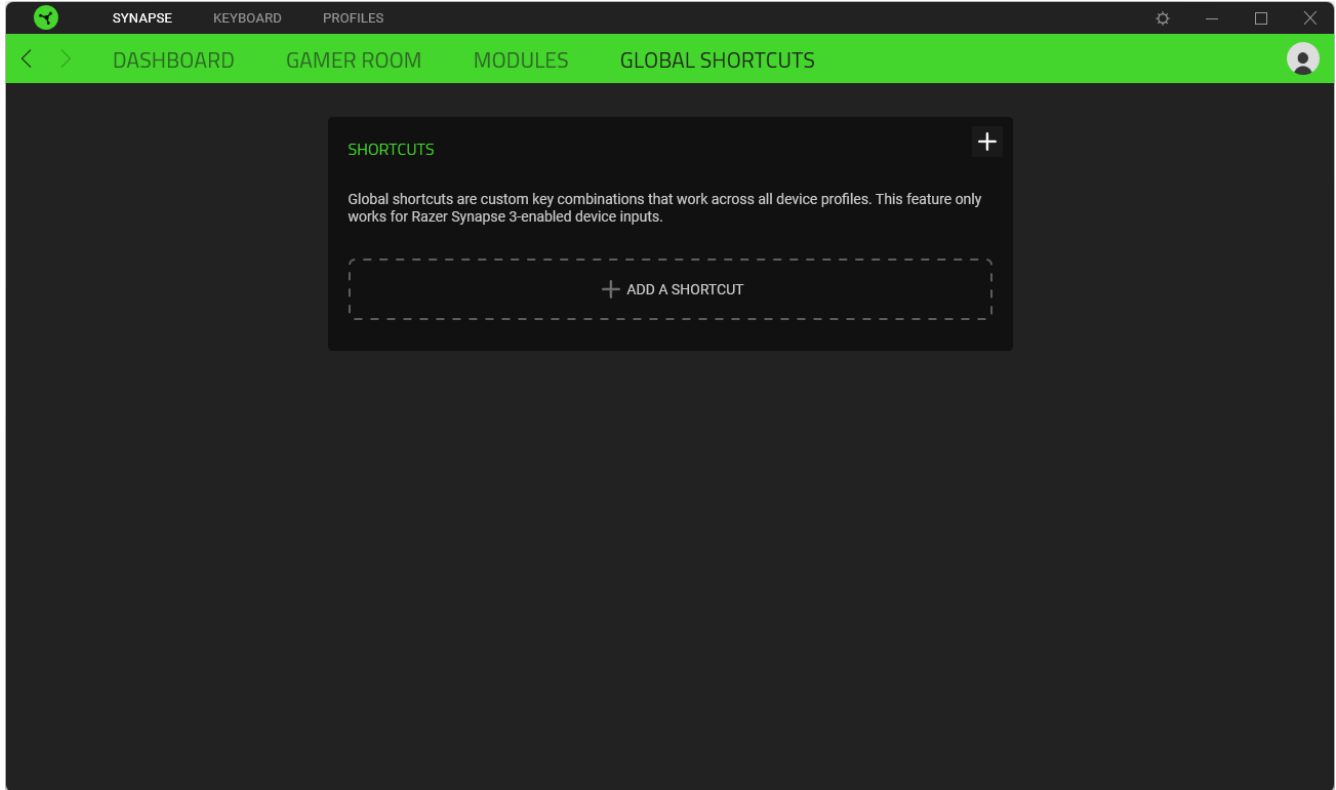
The Modules subtab displays all installed and available modules for installation.



Global Shortcuts

Bind operations or Razer Synapse functions to custom key combinations from Razer Synapse-enabled device inputs that apply across all device profiles. [Learn more about Profiles](#)

 Only Razer Synapse-enabled device inputs will be recognized.

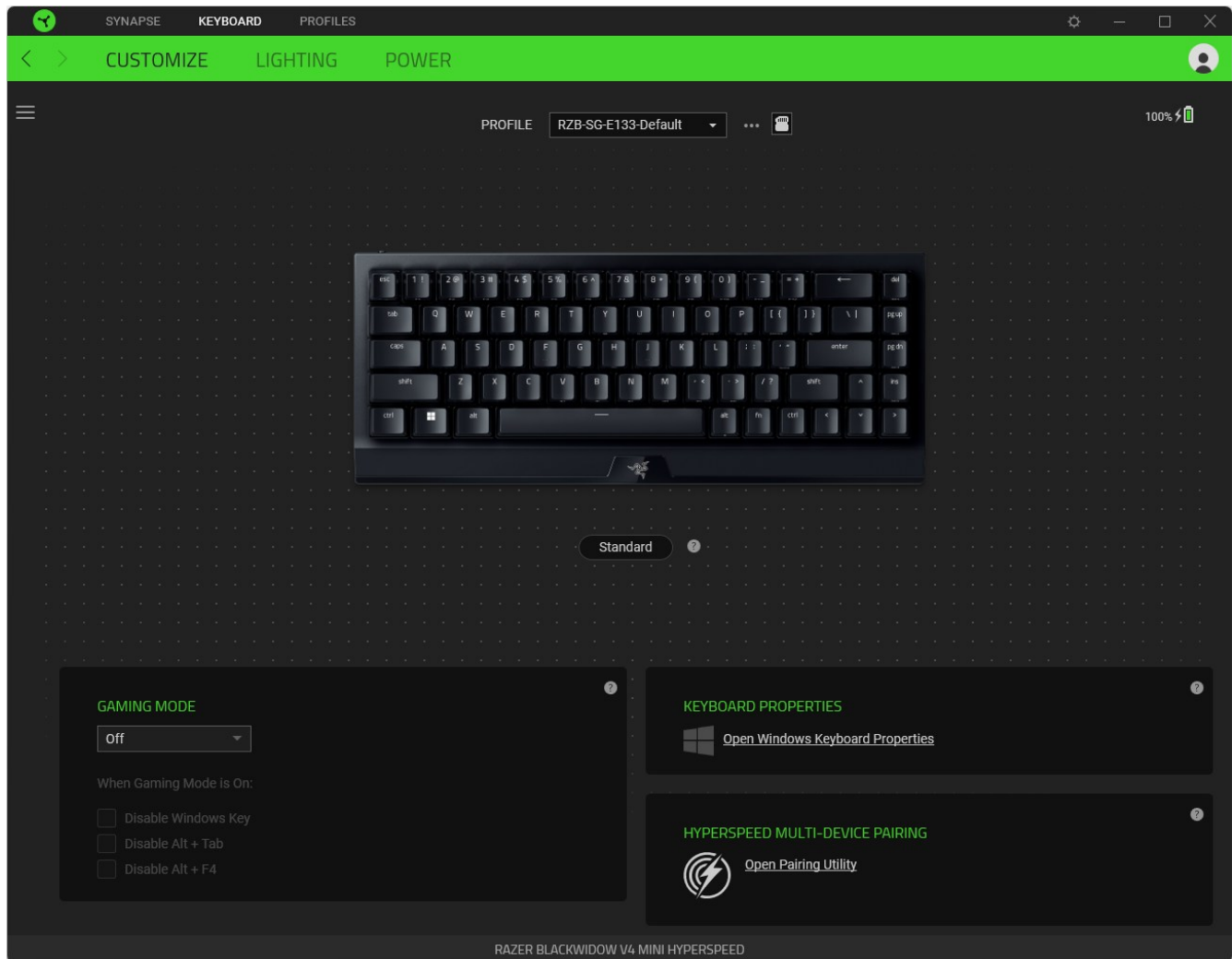


KEYBOARD

The Keyboard tab is the main tab for your Razer BlackWidow V4 Mini HyperSpeed. From here, you can change your device settings such as key assignments, gaming mode settings, and your device's lighting. Changes made under this tab are automatically saved to your system and cloud storage.

Customize

The Customize subtab is for modifying your keyboard's key assignments and gaming mode settings.



Profile

A Profile is a data storage for keeping all your Razer device's settings. By default, the profile name is based on your system's name. To add, import, rename, duplicate, export, reset or delete a profile, press the Miscellaneous button (●●●).

Standard / Hypershift

Hypershift mode is a secondary set of key assignments that is activated when the Hypershift key is held down. By default, the Hypershift key is assigned to the fn key of your Razer Synapse-supported keyboard. However, you can also set any mouse button to activate Hypershift mode.

Gaming Mode

Gaming Mode enables you to customize which keys to disable when Gaming Mode is activated. Depending on your settings, you may choose to disable the Windows key, alt + tab and alt + F4.

HyperSpeed Multi-Device Pairing

Use this feature to pair an additional HyperSpeed-compatible device with the Razer HyperSpeed Wireless Dongle of your Razer BlackWidow V4 Mini HyperSpeed. As its wireless dongle can support a keyboard and mouse simultaneously, you can remove the usage of separate dongles for each peripheral.



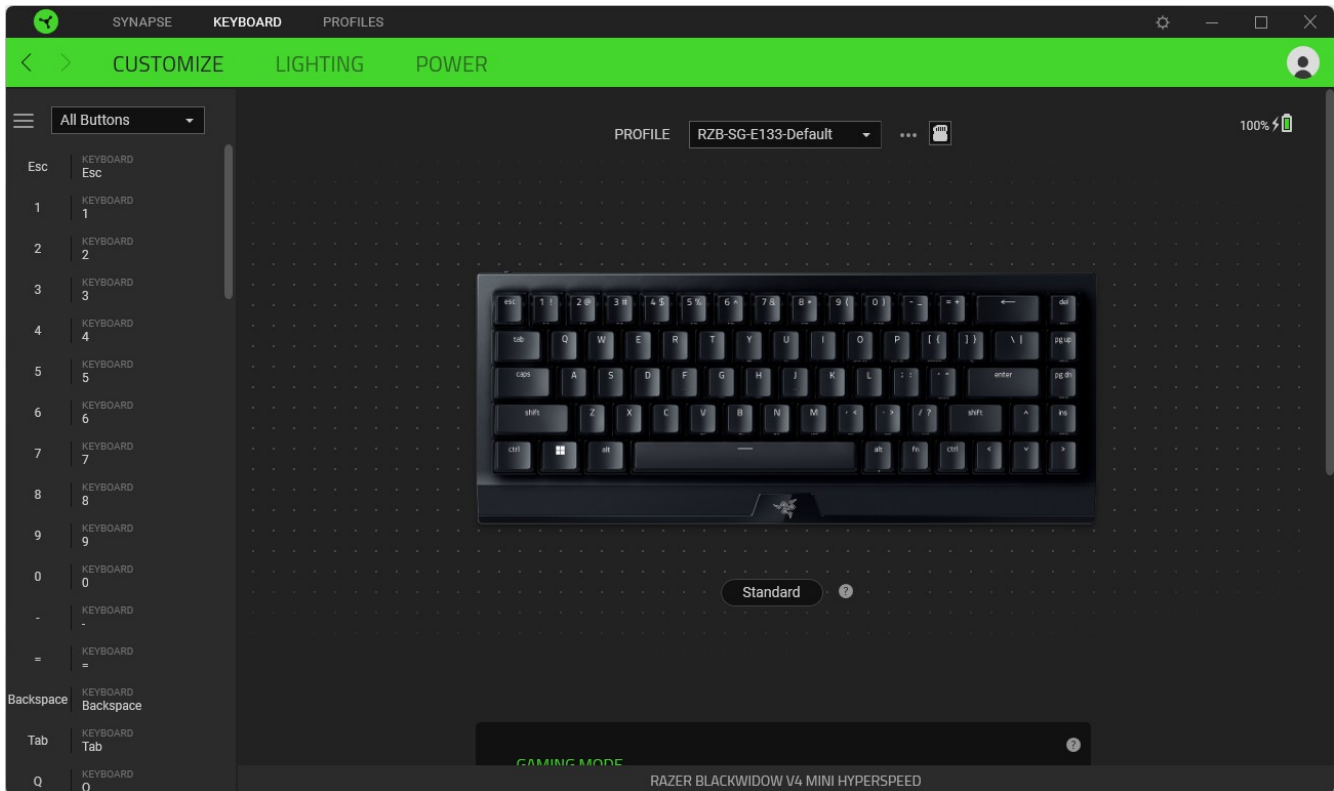
To use this feature, your Razer BlackWidow V4 Mini HyperSpeed must be connected via Razer HyperSpeed Wireless (2.4 GHz) mode. Each peripheral can only connect to one dongle at a time.

Keyboard Properties

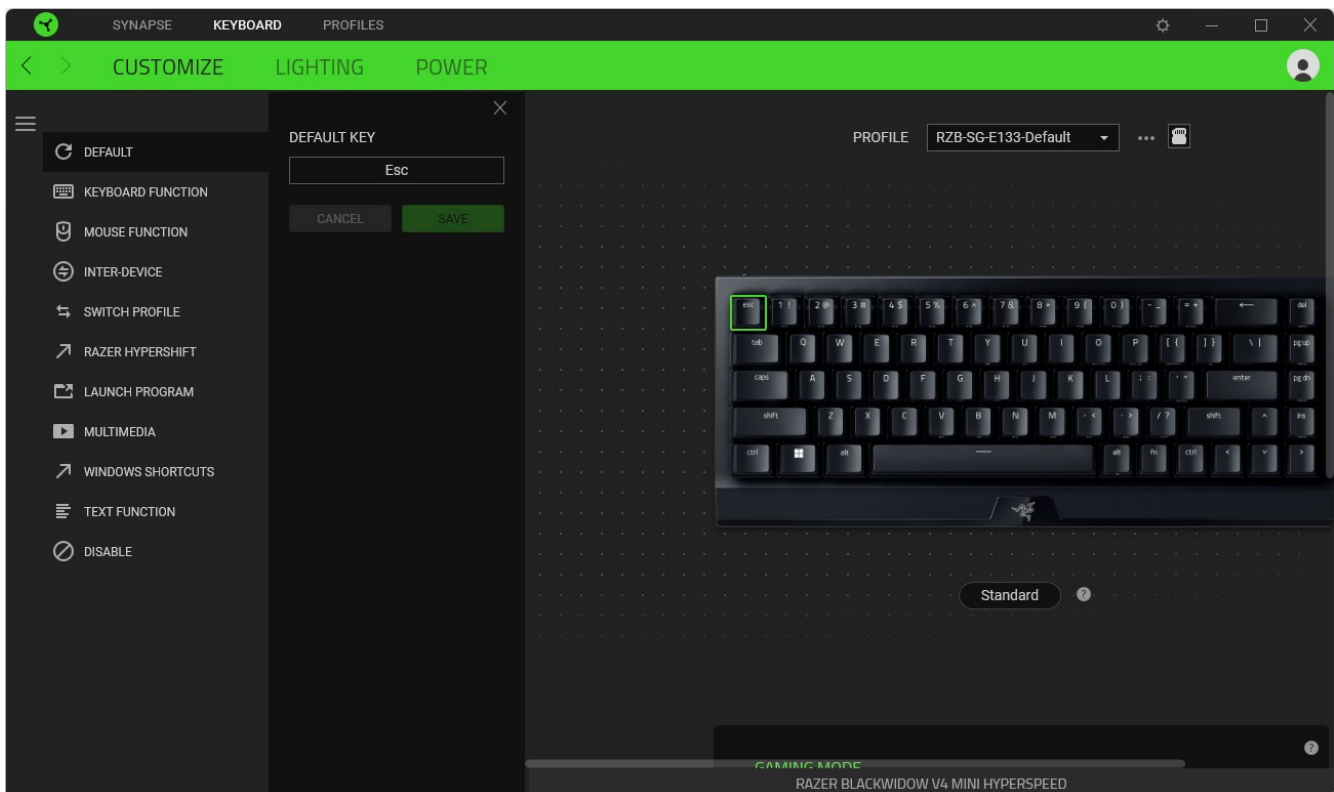
Allows you to open the Windows Keyboard Properties where you can modify other keyboard settings such as Repeat delay, Repeat Rate, and Cursor blink rate, or view all keyboard drivers installed in your PC.

Sidebar

Clicking the Sidebar button (☰) will reveal all current key assignments for your Razer BlackWidow V4 Mini HyperSpeed.



Alternatively, you can skip to a specific key assignment by selecting it on the Customize tab.



Upon selecting a key assignment, you may then change it to one of the following functions:

Default

This option enables you to return the selected key to its original setting.

Keyboard Function

This option changes the key assignment into a keyboard function. You can also choose enable Turbo mode which allows you to emulate repeatedly pressing the keyboard function while the key is held down.

Mouse Function

This option allows you to change any key into a mouse function. You can also choose to enable Turbo mode in some of the mouse functions which allow you to emulate repeatedly pressing and releasing said function while the key is held down.

M Macro

A Macro is a prerecorded sequence of keystrokes and button presses that is executed with precise timing. You can conveniently execute a chain of commands by setting the button function to Macro. This function will only be visible when the Macro module is installed.

Inter-device

Inter-device allows you to change the functionality of other Razer Synapse-enabled devices. Some of these functionalities are device-specific such as using your Razer gaming keyboard to change the Sensitivity Stage of your Razer gaming mouse.

Switch Profile

Switch Profile enables you to quickly change profiles and load a new set of key assignments. An on-screen notification will appear whenever you switch profiles.

Switch Lighting

Switch Lighting allows you to switch between all advanced lighting effects easily. This function will only be visible when the Chroma Studio module is installed.

Razer Hypershift

Setting the key to Razer Hypershift will allow you to activate Hypershift mode as long as the key is held down.

Launch Program

Launch Program enables you to open an app or a website using the assigned key. When you select Launch Program, two choices will appear which requires you to search for a specific app you want to open, or write the address of the website you want to visit.

Multimedia

This option allows you to assign multimedia controls to your Razer device.

Windows Shortcuts

This option allows you to assign your preferred key into a Windows Operating System shortcut command. For more information, please visit: support.microsoft.com/kb/126449

Text Function

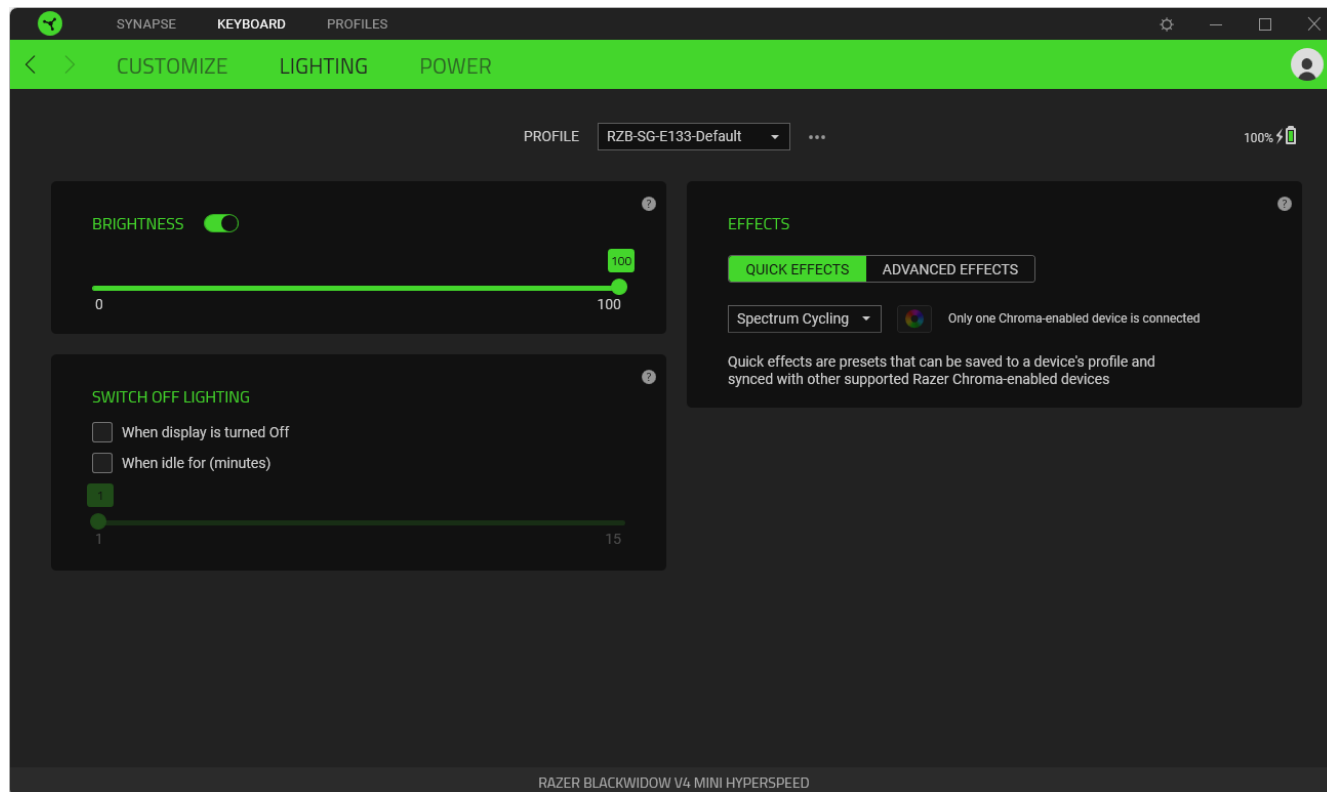
Text Function enables you to type a prewritten text with a touch of a key. Simply write your desired text on the given field and your text will be typed whenever the assigned key is pressed. This function has full Unicode support, and you can also insert special symbols from character maps.

Disable

This option renders the assigned key unusable. Use Disable if you do not want to use the selected key or if it interferes with your gaming.

Lighting

The Lighting subtab enables you to modify your Razer device's light settings.



Brightness

You can turn off your Razer device's lighting by toggling the Brightness option or increase/decrease the luminance using the slider.


Switch Off Lighting










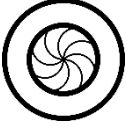
This power-saving tool allows you to disable your device's lighting in response to your system's display turning off and/or automatically power down when your Razer BlackWidow V4 Mini HyperSpeed has been idle for a set time.


Quick Effects

A number of quick effects can be selected and applied to your device's lighting, as listed here:

i Only devices that support the selected lighting effect will synchronize. LED indicators are not customizable.


	Name	Description	How to set up
	Ambient awareness	The lighting on the keyboard will reflect the averaged color on the selected screen region	Select or customize a screen region

	Audio meter	The keyboard will light up according to the audio level with a default spectrum of colors	Select a Color Boost level
	Breathing	The keyboard fades in and out of the selected color(s)	Select up to 2 colors or randomize colors
	Fire	The keyboard lights up in warm colors to mimic the motion of flames	No further customization required
	Reactive	The LEDs will light up when a key is pressed. The light will fade off after a specified period of time	Select a color and a duration
	Ripple	On key press, light will ripple away from the pressed key	Select a color
	Spectrum cycling	The lighting will cycle between 16.8 million colors indefinitely	No further customization required
	Starlight	Each LED will have a chance of fading in and out at a random time and duration	Select up to 2 colors or randomize colors and select a duration
	Static	The LEDs will remain lit in the selected color	Select a color
	Wave	The lighting will scroll in the direction selected	Select either left-to-right or right-to-left wave direction
	Wheel	The keyboard lighting will rotate in the direction selected with a default spectrum of colors	Select either counter-clockwise or clockwise wheel direction

If you have other supported Razer Chroma-enabled devices, you can synchronize their quick effects with your Razer device by clicking the Chroma Sync button ().

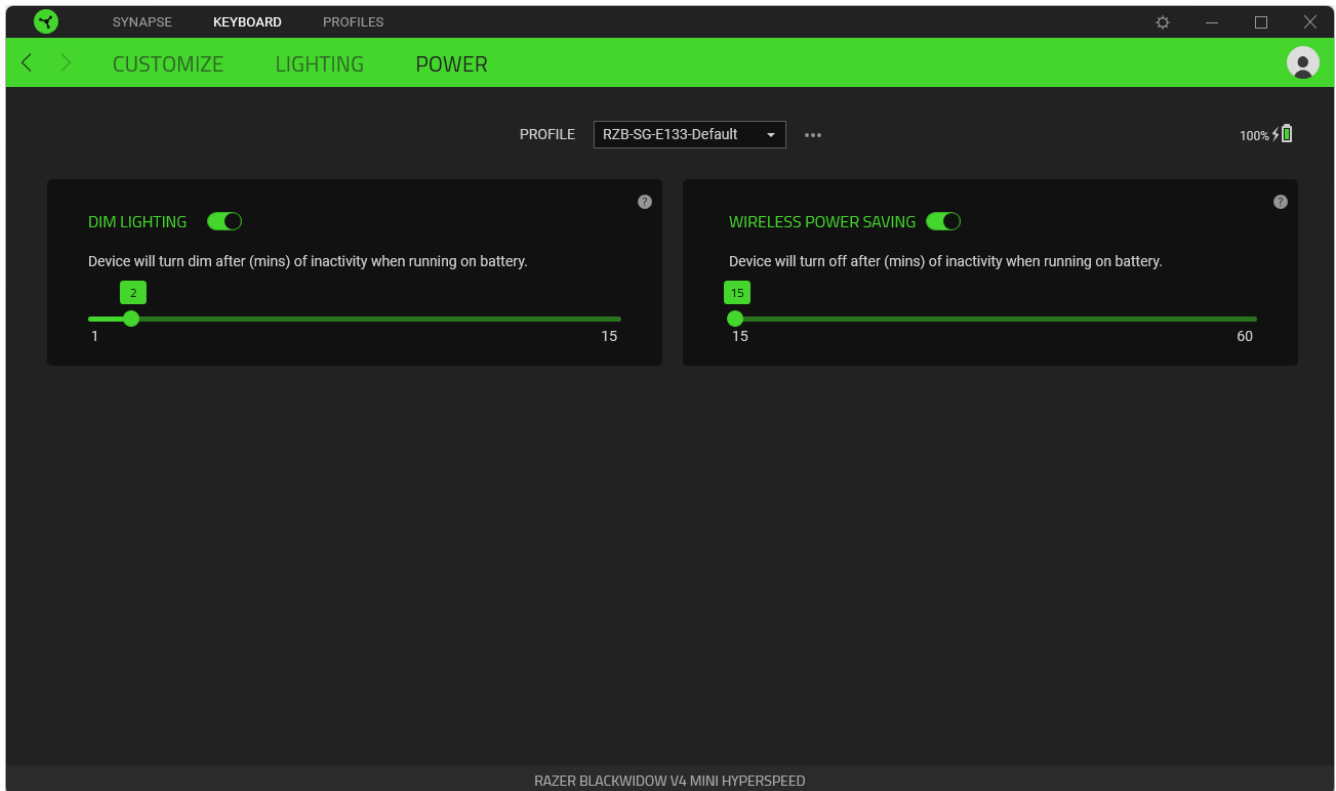
 *Only devices that support the selected lighting effect will synchronize.*

Advanced Effects

The Advanced Effects option allows you to choose a Chroma Effect you want to use on your Razer Chroma-enabled peripheral. To start making your own Chroma Effect, simply press the Chroma Studio button ().

Power

The Power subtab allows you to manage your device's energy consumption when running on batteries.



Dim Lighting

Set how long your device should be idle before it lowers its brightness.

Wireless Power Saving

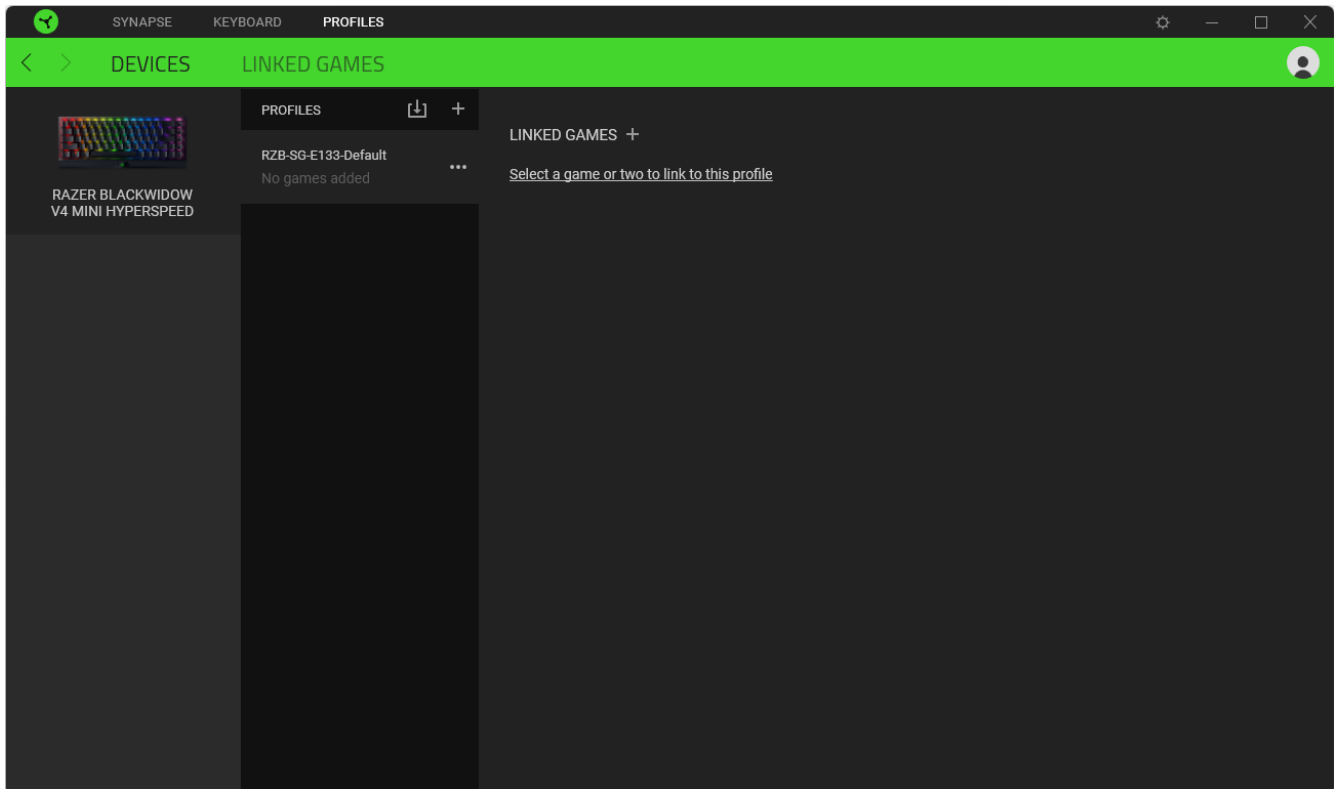
Set your device to enter sleep mode when it has been idle for a certain amount of time.



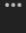
PROFILES TAB

The Profiles tab is a convenient way to manage all your profiles and link them to your games and applications.

Devices

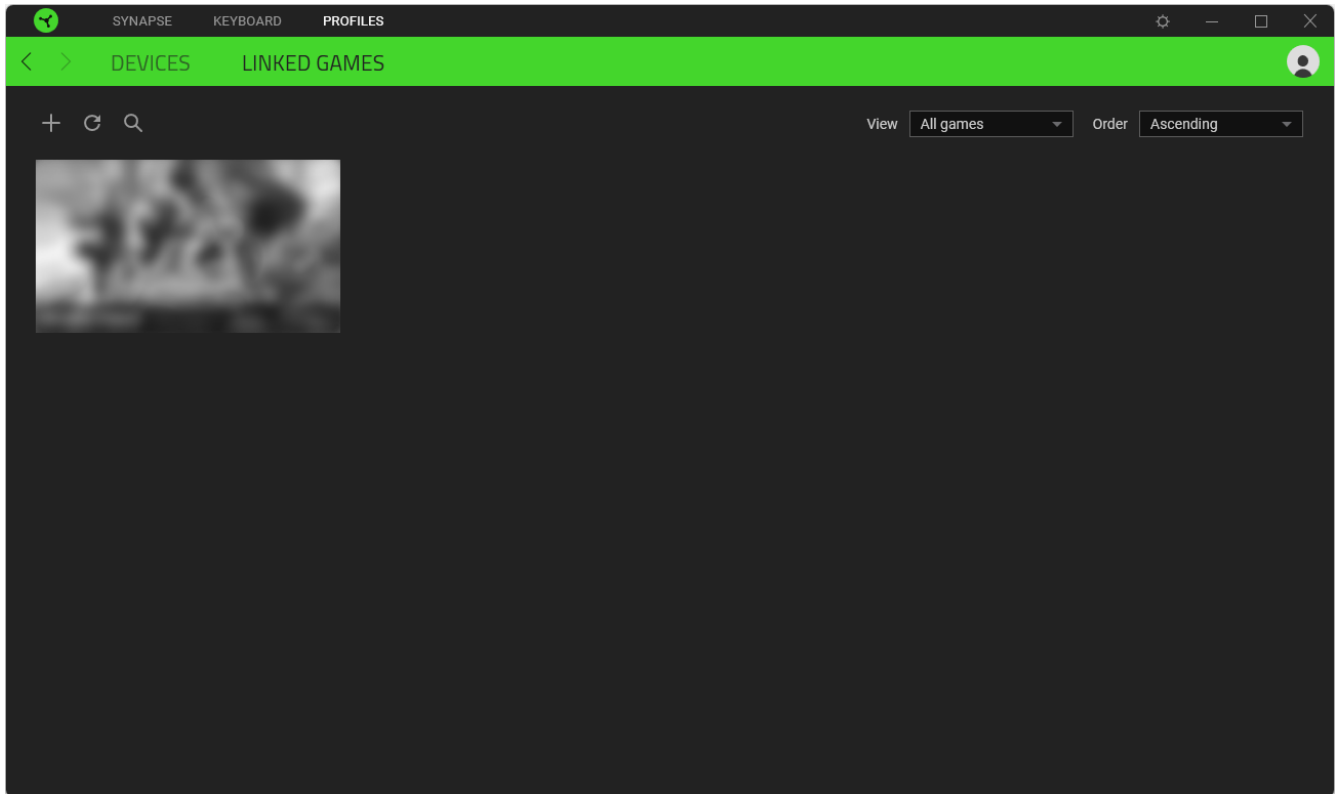
View which games are linked to each device's profiles or which Chroma Effect is linked to specific games using the Devices subtab.



You can import Profiles from your computer or the cloud through the import button () or create new profiles within the selected device using the add button (). To rename, duplicate, export, or delete a profile, simply press the Miscellaneous button (). Each profile can be set to activate when you run an application using the Linked Games option.

Linked Games

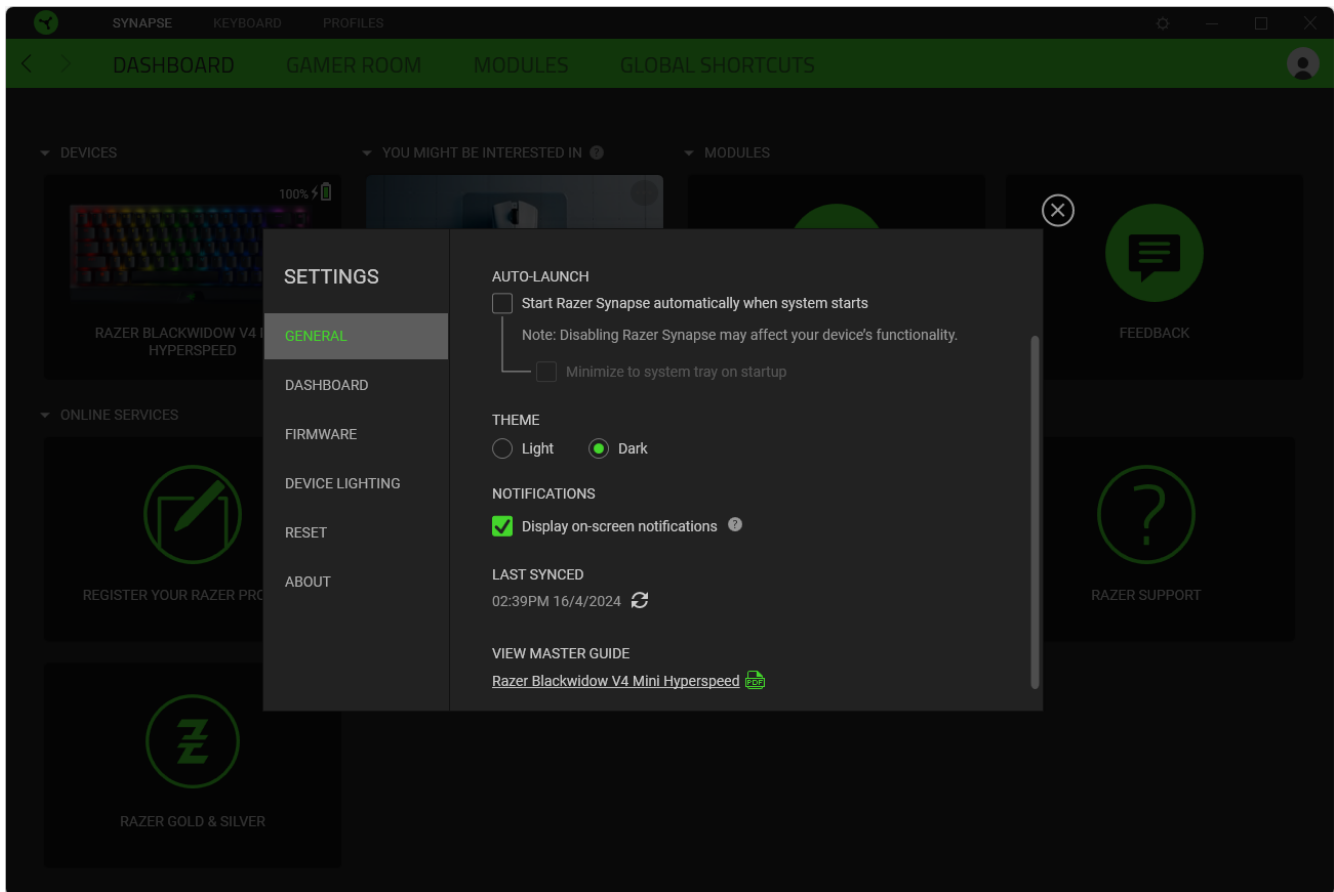
The Linked Games subtab allows you to add games, view devices linked to games, or search for added games. You can also sort games based on alphabetical order, last played, or most played. Added games will still be listed here, even if they are not linked to a Razer device.



To link games to connected Razer devices or Chroma Effects, simply click on any game from the list, and then click **Select a device and its profile to launch automatically during gameplay** to select the Razer device or Chroma Effect it will link with. Once connected, you may click the Miscellaneous button (●●●) of the corresponding Chroma Effect or device to select a specific Chroma Effect or profile.

SETTINGS WINDOW

The Settings window, accessible by clicking the (⚙️) button on Razer Synapse, enables you to configure the startup behavior and display language of Razer Synapse, control the recommendations you see on the Dashboard, check the firmware version and master guide of each Razer device, or perform a factory reset on any connected Razer device.



General tab

The General tab lets you change the software's display language, startup behavior, theme, and on-screen notifications. You may also manually sync your profiles to the cloud (↻) or view the master guide of all connected Razer devices and installed modules.

Dashboard tab

Use the Dashboard tab to customize which Razer device recommendations based on your setup, and the games you play will appear on the Dashboard.

Firmware tab

Access the Firmware tab to view the current firmware version of your Razer device(s), and/or visit the Software and Firmware Update page to see whether a firmware update is available for your device(s).

Reset tab

The Reset tab allows you to perform a factory reset on all connected Razer devices with on-board memory and/or reset Razer Synapse tutorials to acquaint yourself again with Razer Synapse's new features on its next launch.



All profiles stored on the selected device's on-board memory will be erased when you reset a Razer device.

About tab

The About tab displays brief software information and copyright statement, and provides relevant links for its terms of use. You may also use this tab to check for software updates, or as quick access to Razer's social communities.

8. SAFETY AND MAINTENANCE

SAFETY GUIDELINES

To achieve maximum safety while using your Razer BlackWidow V4 Mini HyperSpeed, we suggest that you adopt the following guidelines:

Should you have trouble operating the device properly and troubleshooting does not work, unplug the device and contact the Razer hotline or go to support.razer.com for support.

Don't take apart the device, and do not attempt to operate it under abnormal current loads. Doing so will void your warranty.

Keep the device away from liquid, humidity or moisture. Operate the device only within the specific temperature range of 0°C (32°F) to 40°C (104°F). Should the temperature exceed this range, unplug and/or switch off the device to let the temperature stabilize to an optimal level.

COMFORT

Research has shown that long periods of repetitive motion, improper positioning of your computer peripherals, incorrect body position, and poor habits may be associated with physical discomfort and injury to nerves, tendons, and muscles. Below are some guidelines to avoid injury and ensure optimum comfort while using your Razer BlackWidow V4 Mini HyperSpeed.

1. Position your keyboard and monitor directly in front of you with your mouse next to it. Place your elbows next to your side, not too far away, and your keyboard within easy reach.
2. Adjust the height of your chair and table so that the keyboard and mouse are at or below elbow height.
3. Keep your feet well supported, posture straight, and your shoulders relaxed.
4. During gameplay, relax your wrist and keep it straight. If you do the same tasks with your hands repeatedly, try not to bend, extend or twist your hands for long periods.
5. Don't rest your wrists on hard surfaces for long periods.
6. Use a wrist rest to support your wrist while gaming.
7. Customize the keys on your keyboard to suit your gaming style and minimize repetitive or awkward motions.
8. Don't sit in the same position all day. Get up, step away from your desk, and do exercises to stretch your arms, shoulders, neck, and legs.

If you should experience any physical discomfort while using your keyboard, such as pain, numbness, or tingling in your hands, wrists, elbows, shoulders, neck or back, please consult a qualified medical doctor immediately.

MAINTENANCE AND USE

The Razer BlackWidow V4 Mini HyperSpeed requires minimum maintenance to keep it in optimum condition. Once a month, we recommend you unplug and switch off the device from the computer and clean it using a soft cloth or cotton swab to prevent dirt buildup. Don't use soap or harsh cleaning agents.

9. LEGALESE

COPYRIGHT AND INTELLECTUAL PROPERTY INFORMATION

©2025 Razer Inc. All rights reserved. Razer, the triple-headed snake logo, Razer logo, "For Gamers. By Gamers.", and "Razer Chroma" logo are trademarks or registered trademarks of Razer Inc. and/or affiliated companies in the United States or other countries. All other trademarks are the property of their respective owners.

The Bluetooth® word mark and logos are registered trademarks owned by Bluetooth SIG, Inc., and any use of such marks by Razer is under license.

Windows and the Windows logo are trademarks of the Microsoft group of companies.

Razer Inc. ("Razer") may have copyright, trademarks, trade secrets, patents, patent applications, or other intellectual property rights (whether registered or unregistered) concerning the product in this guide. Furnishing of this guide does not give you a license to any such copyright, trademark, patent or other intellectual property right. The Razer BlackWidow V4 Mini HyperSpeed (the "Product") may differ from pictures whether on packaging or otherwise. Razer assumes no responsibility for such differences or for any errors that may appear. Information contained herein is subject to change without notice.

LIMITED PRODUCT WARRANTY

For the latest and current terms of the Limited Product Warranty, please visit [razer.com/warranty](https://www.razer.com/warranty).

LIMITATION OF LIABILITY

Razer shall in no event be liable for any lost profits, loss of information or data, special, incidental, indirect, punitive or consequential or incidental damages, arising in any way out of distribution of, sale of, resale of, use of, or inability to use the Product. In no event shall Razer's liability exceed the retail purchase price of the Product.

GENERAL

These terms shall be governed by and construed under the laws of the jurisdiction in which the Product was purchased. If any term herein is held to be invalid or unenforceable, then such term (in so far as it is invalid or unenforceable) shall be given no effect and deemed to be excluded without invalidating any of the remaining terms. Razer reserves the right to amend any term at any time without notice.