



RAZER LAPTOP SLEEVE 16" WITH
WIRELESS CHARGING FOR DEVICES

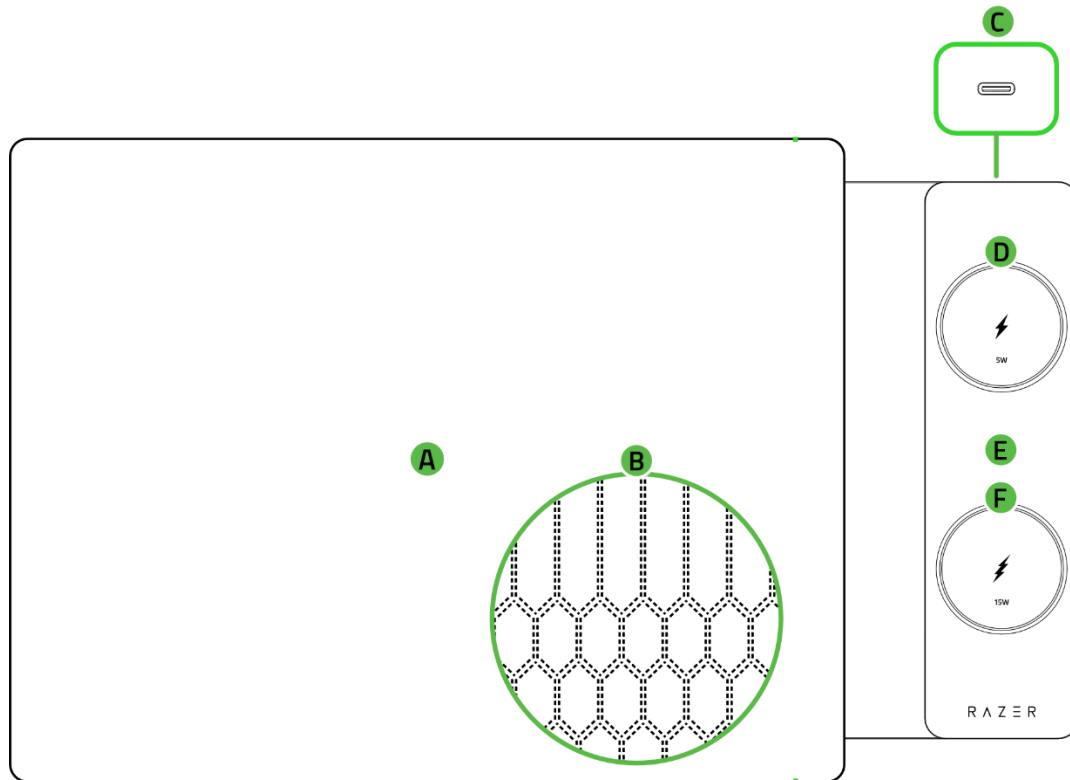
MASTER GUIDE

CONTENTS

1. WHAT'S INSIDE	2
2. WHAT'S NEEDED	3
3. LET'S GET YOU COVERED	3
4. GETTING STARTED	4
5. SAFETY AND MAINTENANCE	5
6. LEGALESE.....	6

1. WHAT'S INSIDE

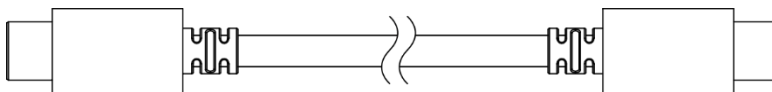
- Razer Laptop Sleeve 16" with Wireless Charging for Devices



- A. Polyester weave exterior
- B. Padded microfiber fabric interior
- C. USB Type C port*
- D. 5W wireless charging pad (for accessory)
- E. Premium leatherette-wrapped charging flap
- F. 15W wireless charging pad (for smartphone)

**For best performance and to power both charging pads at full capacity, use a USB Type C power source with Power Delivery (PD), rated at 30W or higher. Lower-power ports may reduce charging efficiency.*

- USB Type C cable



- Important Product Information Guide

2. WHAT'S NEEDED

- Razer Blade 16 or 16-inch laptop*
- Wireless charging-capable device
- USB Type C port or external charging adapter**

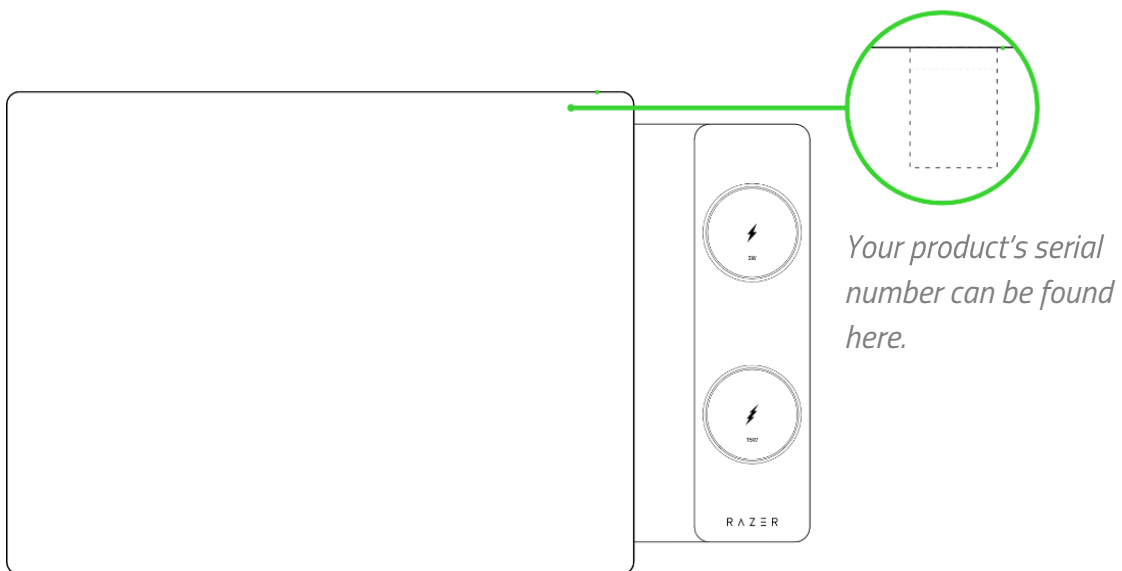
*Fits most 16-inch laptops. Visit support.razer.com for the sleeve's maximum supported dimensions.

** For best performance and to power both charging pads at full capacity, use a USB Type C power source with Power Delivery (PD), rated at 30W or higher. External charging adapter not included and sold separately.

3. LET'S GET YOU COVERED

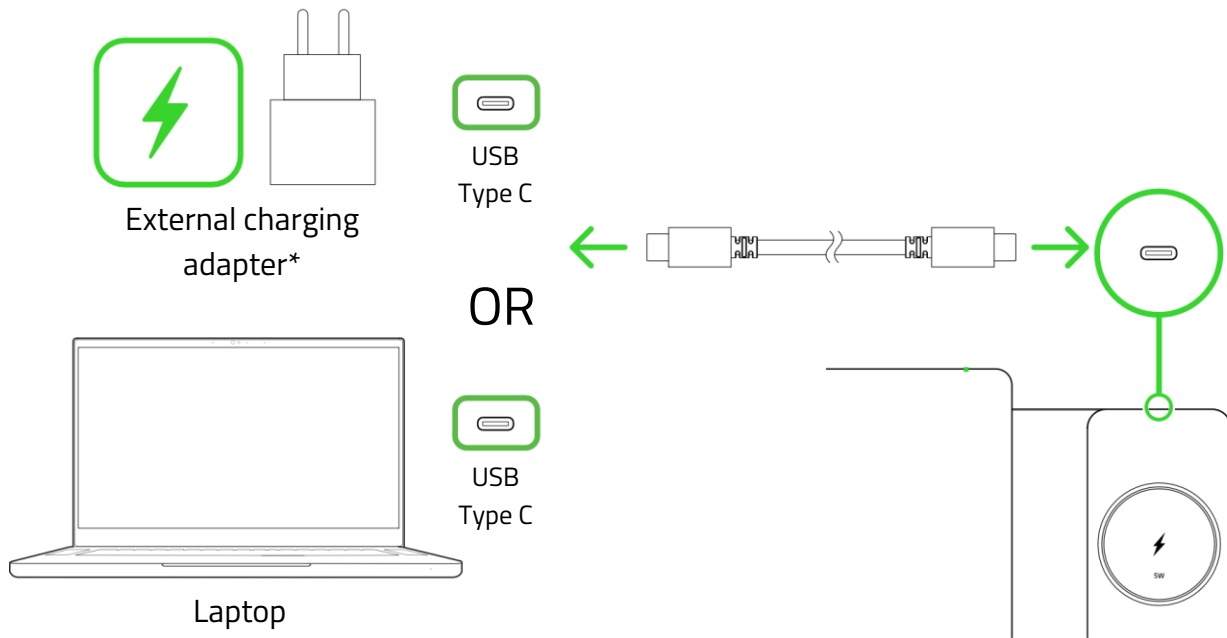


You've got a great device — now make it even better. Register your warranty at razerid.razer.com to get covered and unlock exclusive Razer benefits.



4. GETTING STARTED

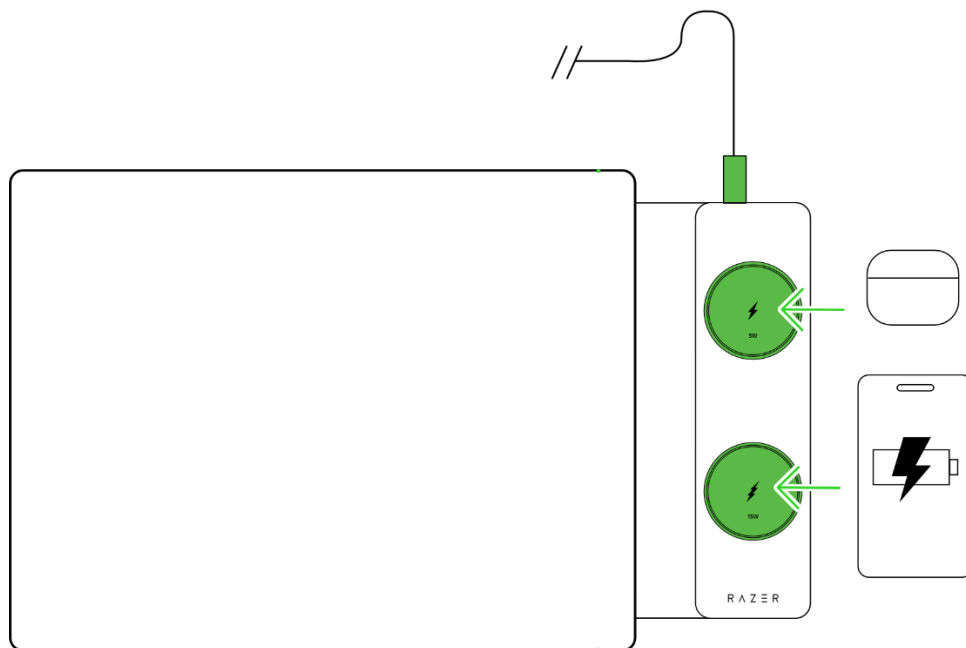
1. Set up



**External charging adapter not included and sold separately.*

i *For best performance and to power both charging pads at full capacity, use a USB Type C power source with Power Delivery (PD), rated at 30W or higher.*

2. Charge devices



5. SAFETY AND MAINTENANCE

SAFETY GUIDELINES

To achieve maximum safety while using the Razer Laptop Sleeve 16" with Wireless Charging for Devices, we suggest that you adopt the following guidelines:

- Should you have trouble operating the device properly and troubleshooting does not work, unplug the device and contact the Razer hotline or go to support.razer.com for assistance.
- Don't take apart the device, and do not attempt to operate it under abnormal current loads. Doing so will void your warranty.
- Only use accessories provided with the device or those made and/or approved by Razer to ensure compatibility and safety.
- Don't expose the device to water, excessive moisture, or direct heat sources.
- For safe and efficient charging, place only compatible devices on the charging pads and keep metal objects like keys or coins away.
- Don't place cards, passports, or key fobs on the charging pads as they may be damaged by magnetic or RFID interference.
- Do not store or use near flammable objects or surfaces.
- If the sleeve or charging flap becomes damaged, discontinue use and contact support.
- To preserve the leatherette surface, keep sharp objects away from the sleeve to avoid scratches or damage.
- Keep the device away from liquid, humidity or moisture. Operate the device only within the specific temperature range of 0°C (32°F) to 35°C (95°F). Should the temperature exceed this range, unplug the device to let the temperature stabilize to an optimal level.

MAINTENANCE AND USE

The Razer Laptop Sleeve 16" with Wireless Charging for Devices requires minimum maintenance to keep it in optimum condition.

- Clean the exterior with a soft, damp cloth. Do not use soap or harsh cleaning agents.
- Use a microfiber cloth to gently wipe the flap and charging pads.
- Store in a cool, dry place when not in use.
- Avoid overloading the sleeve with items that may stretch or deform its shape.

6. LEGALESE

COPYRIGHT AND INTELLECTUAL PROPERTY INFORMATION

©2026 Razer Inc. All rights reserved. Razer, the triple-headed snake logo, Razer logo, "For Gamers. By Gamers.", and "Razer Chroma" logo are trademarks or registered trademarks of Razer Inc. and/or affiliated companies in the United States or other countries. All other trademarks are the property of their respective owners.

Razer Inc. ("Razer") may have copyright, trademarks, trade secrets, patents, patent applications, or other intellectual property rights (whether registered or unregistered) concerning the product in this guide. Furnishing of this guide does not give you a license to any such copyright, trademark, patent or other intellectual property right. The Razer Laptop Sleeve 16" with Wireless Charging for Devices (the "Product") may differ from pictures whether on packaging or otherwise. Razer assumes no responsibility for such differences or for any errors that may appear. Information contained herein is subject to change without notice.

LIMITED PRODUCT WARRANTY

For the latest and current terms of the Limited Product Warranty, please visit razer.com/warranty.

LIMITATION OF LIABILITY

Razer shall in no event be liable for any lost profits, loss of information or data, special, incidental, indirect, punitive or consequential or incidental damages, arising in any way out of distribution of, sale of, resale of, use of, or inability to use the Product. In no event shall Razer's liability exceed the retail purchase price of the Product.

GENERAL

These terms shall be governed by and construed under the laws of the jurisdiction in which the Product was purchased. If any term herein is held to be invalid or unenforceable, then such term (in so far as it is invalid or unenforceable) shall be given no effect and deemed to be excluded without invalidating any of the remaining terms. Razer reserves the right to amend any term at any time without notice.