



new razer blade windows 8 clean install

Please follow the steps below to upgrade your New Razer Blade to Windows 8.

Please note:

- This will erase all of your data from your computer and reformat your hard drive. Please back up all of your data to external media before proceeding.
- After performing the clean install, the F9 recovery partition in your New Blade can no longer be used
- We recommend printing these instructions before starting the process.

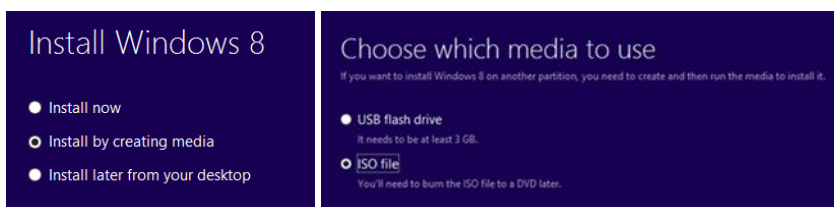
Step 1: Purchase Windows 8 Upgrade.

Step 2: Download and Run the latest firmware update to your New Razer Blade at www.razersupport.com/downloads or [Click Here](#)

Step 3: Download the latest **Windows 8 New Razer Blade drivers** from www.razersupport.com or [Click Here](#) and save them to a thumb drive.

Step 4: Creating bootable media.

If you are installing Win 8 via a downloadable file from the internet: Download the file. Follow the prompts. Then when asked, click “install by creating media” and follow the steps for creating media to a DVD or flash drive.



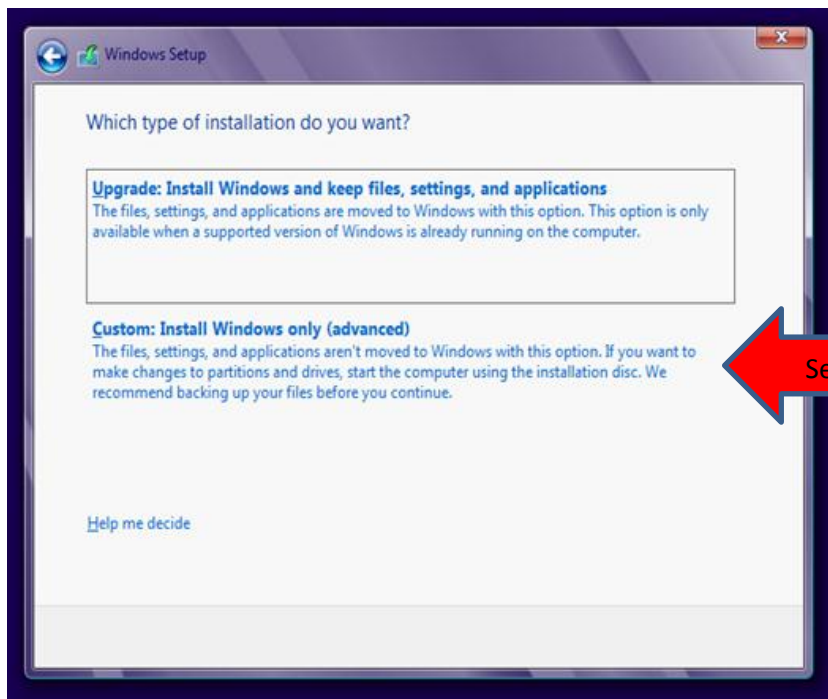


Step 5: Booting the Razer Blade to your media.

Use either the media you created above or the DVD that was supplied when you purchased Windows 8.

- For DVDs connect an external USB DVD-ROM drive to your Razer Blade and insert disc.
- For flash drives, insert drive into a Blade USB port.
- Reboot your Razer Blade.
- Press F12 to access the boot menu.
- Choose to boot from the DVD-ROM drive or Flash Drive depending on your media.

Step 6: When you reach a prompt asking “Which type of installation do you want?” select “**Custom: Install Windows only (advanced)**”. See screenshot below.





Step 7: When you reach a prompt asking “Where do you want to install Windows?” select “Drive options (advanced)”. See screenshot below.



Step 8: Delete all partitions by selecting each partition and clicking “Delete”. It should appear similar to the screenshot below after all partitions have been deleted.



Step 9: Select “Drive 0 Unallocated Space” and click “Next” on the bottom of the screen to begin installing Windows 8. At this point Windows 8 is being installed on your Blade. Your Blade will restart several times during this process. This can take up to an hour for the install to complete.

