



DRIVER INSTALLATION INSTRUCTIONS

RAZER BLADE 15" (LATE 2019) – ADVANCED MODEL
NVIDIA GRAPHICS DRIVER VERSION 26.21.14.3186

DRIVER INSTALLATION INSTRUCTIONS

APPLICABLE MODEL NUMBERS

- RZ09-03137
- RZ09-03138

DRIVER NAME AND VERSION

Nvidia Graphics Driver Version 26.21.14.3186

INSTRUCTIONS

Note: This download is for the original driver that was installed on your Razer Laptop. Updates for this driver are available via standard Windows Updates. To ensure you have the latest driver installed on your Blade please make sure to apply all available updates from Windows.

Please follow the instructions below to download and install the original driver for your Blade. Following the installation, it is recommended to search for any available Windows Updates.

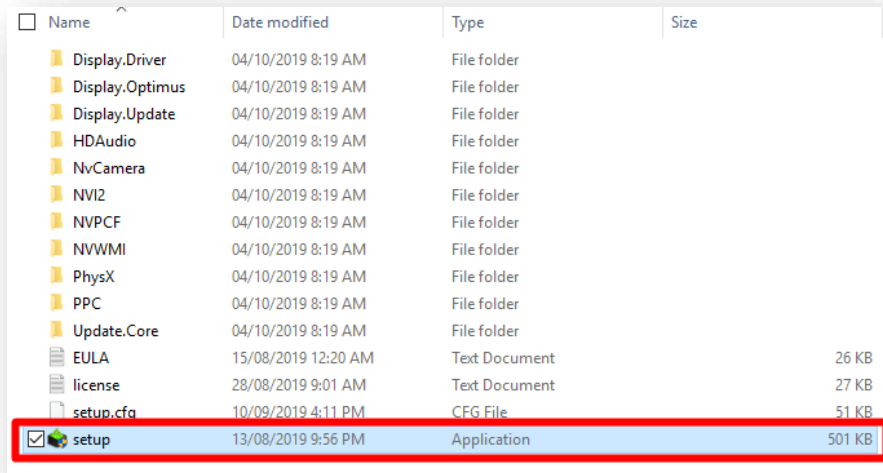
1. Ensure that your Blade is plugged into a wall outlet and not running on battery alone before proceeding.
2. Save any open documents on your computer and close all other programs before attempting this update.
3. Download the driver from the link below. You will need to right click the .zip folder and choose to extract the files to location of your choosing (such as your desktop) to locate the files for the installation process.

<http://rZR.to/D8rTA>

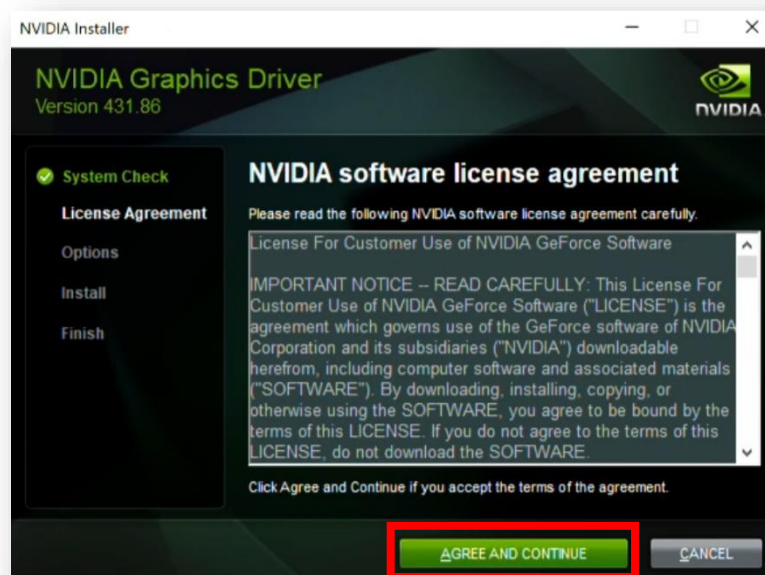
4. Once you have extracted the file proceed to the installation steps below.

INSTALLATION PROCESS

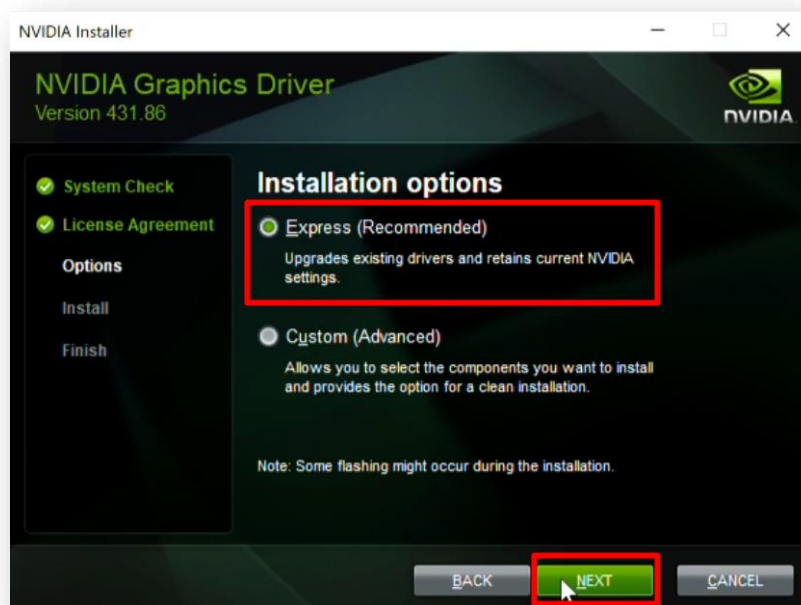
1. Run "setup.exe" (Application) as shown in the image below:



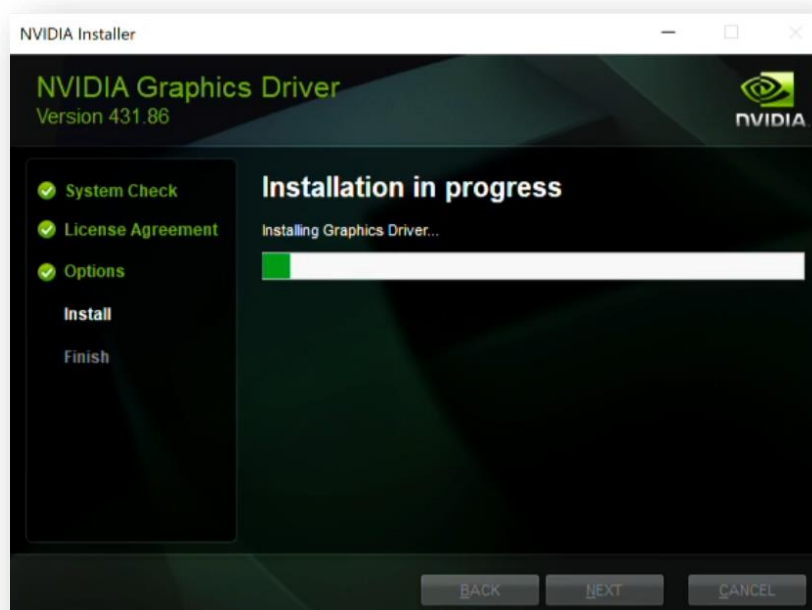
2. The User Account Control window may pop up to confirm changes that will be made by the application. Click "Yes" to allow the application to launch.
3. Upon launching, the NVIDIA Graphics Driver Installer will then check for system compatibility. Wait for the System Check to be completed.
4. A license agreement will then appear on the screen. Read the terms of the agreement, then click "AGREE AND CONTINUE".



5. Click "Express" from the Installation options, then click "NEXT".



6. A progress bar will appear indicating the status and progression of the installation process. Do not interrupt the installation process.



7. Once the installation is complete, click "CLOSE".

