



RAZER BLADE 15" (2019) ADVANCED
MODEL EMBEDDED CONTROLLER
UPDATER

VERSION 1.3

RAZER BLADE 15" (2019) ADVANCED MODEL EMBEDDED CONTROLLER UPDATER. V1.3

This document is a step by step process on how to update the Embedded Controller (EC) of your Razer Blade 15" (2019) Advanced Model. Please verify your model number is listed below to confirm this update applies to your Blade. Your model number can be found at the bottom of your Blade.

APPLICABLE MODEL NUMBERS

RZ09-02886 Razer Blade 15" (2019) Advanced Model

RZ09-02887 Razer Blade 15" (2019) Advanced Model

RZ09-02888 Razer Blade 15" (2019) Advanced Model

RELEASE NOTES

Stability improvements.

Addresses audible motherboard noise.

BEFORE YOU START THE INSTALLATION PROCESS

1. Please ensure you have installed all the latest Microsoft® Windows Operating Systems and Security Updates. For help verifying your OS is up to date please refer to the following article from Microsoft.

<https://support.microsoft.com/en-us/help/4027667/windows-update-windows-10>

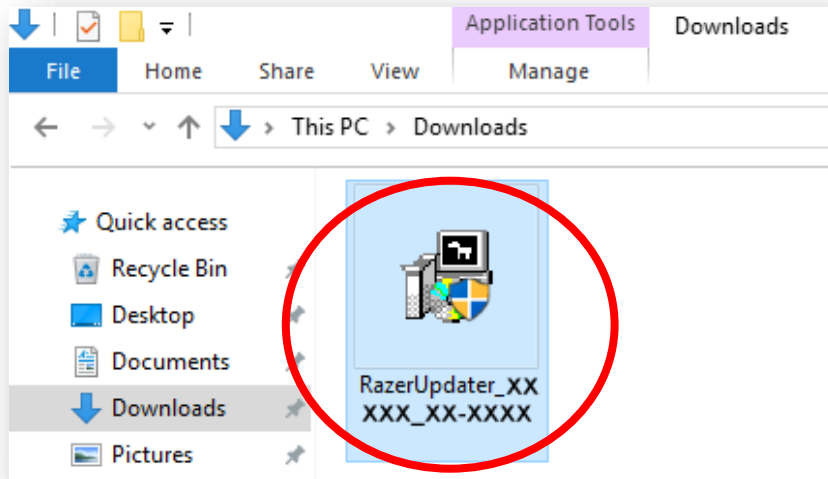
2. Ensure that your Blade is plugged into a wall outlet and not running on battery alone before proceeding.
3. Save any open documents on your computer and close all other programs before attempting this update.
4. Please proceed with downloading the update from the link below. You will need to right click the .zip folder and choose to extract the files to a location of your choosing (such as your desktop or downloads folder).

<http://rZR.to/bvjSQ>

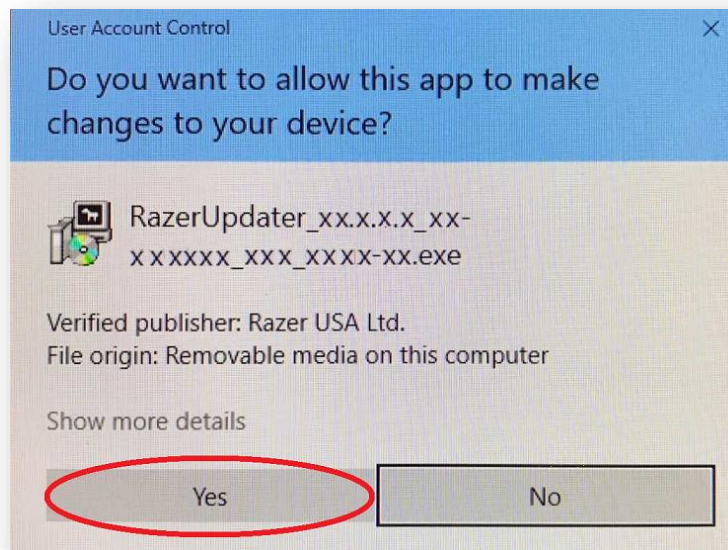
5. Once you have extracted the file proceed to the installation steps below.

INSTALLATION PROCESS

1. Click on the updater file located in your chosen download location to begin the update process.

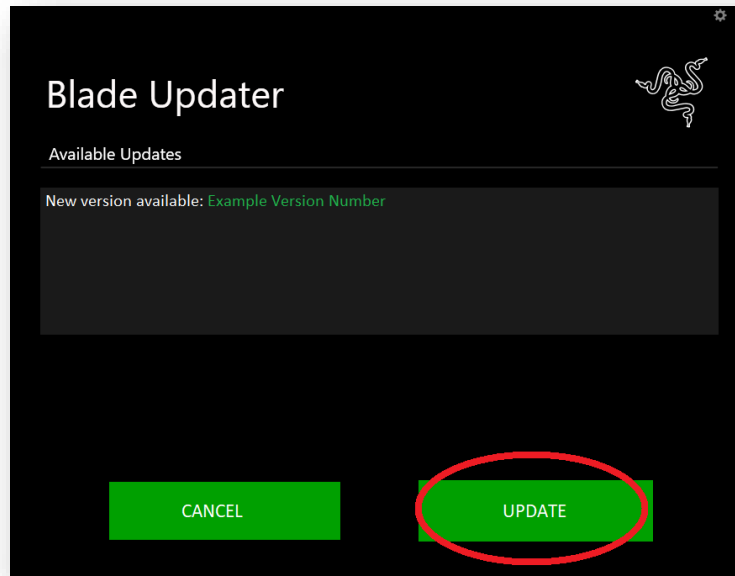


2. The User Account Control window may pop up to confirm changes that will be made by the application (as seen below). Click 'Yes' to allow the RazerUpdater_ application to launch.



3. The Blade Updater window will appear with details regarding your current update version and the version your Razer Blade will be updated to.
4. Click "Update" to initiate the update process of your Razer Blade. **Please note:**

You may lose control of your mouse and keyboard during the updating process.
You will also not be able to proceed if you already have the latest software installed.



5. A progress bar will appear indicating the status and progression of the installation process. During the install process, you will not have access to other applications.
6. Once the progress bar reaches 100% completion, your Razer Blade will restart automatically. No further action or steps are required after the progress bar reaches 100%. Once your Blade has restarted your system will be updated.
7. This completes the installation process.