



The Razer Sabertooth Elite Gaming Controller for Xbox 360 is the supercharged successor to the award-winning Razer Onza. Now, it has been restructured with even more customizability and control options in an all new, rugged design that doesn't compromise comfort.

An unprecedented six additional multi-function buttons – two at the shoulders and two removable rocking switches at the bottom of the controller – allow you to react to any situation or enemy instantaneously by putting more power right at your fingertips. The Razer Sabertooth lets you reconfigure your choice of buttons elsewhere on the controller to any of the six multi-function buttons.

With an integrated OLED screen on the Razer Sabertooth, you get ease of customizability over the controller's multitude of features. From programming the multi-function buttons, to adjusting the analog stick's sensitivity, and creating profiles, you'll be setting the controller up just the way you want it.

The best professional gamers are masters of their equipment, not the other way round. The Razer Sabertooth was made to make sure you're perfectly set up for winning.

## TABLE OF CONTENTS

1. PACKAGE CONTENTS / SYSTEM REQUIREMENTS.....	3
2. REGISTRATION / TECHNICAL SUPPORT.....	4
3. DEVICE LAYOUT.....	5
4. CONNECTING TO YOUR XBOX 360®.....	7
5. USING YOUR RAZER SABERTOOTH.....	9
6. CONFIGURING YOUR RAZER SABERTOOTH.....	11
7. SAFETY AND MAINTENANCE.....	25
8. LEGALESE.....	26

---

## 1. PACKAGE CONTENTS / SYSTEM REQUIREMENTS

### ***PACKAGE CONTENTS***

- Razer Sabertooth Elite Gaming Controller for Xbox 360®
- Travel Pouch
- 2 Rubber Covers
- Screwdriver
- Detachable Braided Fiber Cable
- Breakaway Cable
- 2 Analog Stick Rubber Grip Caps
- Quick Start Guide

### ***SYSTEM REQUIREMENTS***

- Xbox 360® / Xbox 360® S  
OR
- PC with a free USB 2.0 port
- Windows® 8 / Windows® 7 / Windows Vista® / Windows® XP

---

## 2. REGISTRATION / TECHNICAL SUPPORT

### **REGISTRATION**

- Please visit [www.razerzone.com/registration](http://www.razerzone.com/registration) for online product registration.

### **TECHNICAL SUPPORT**

What you'll get:

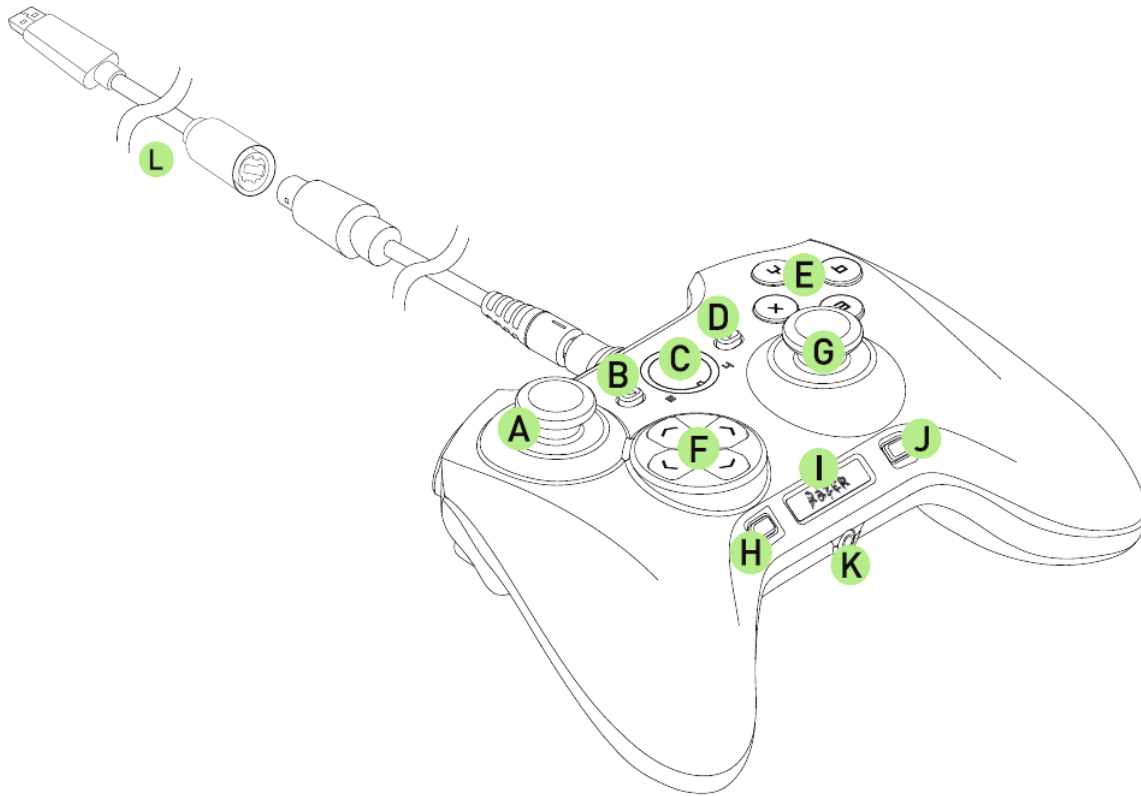
- 1 year limited manufacturer's warranty.
- Free online technical support at [www.razersupport.com](http://www.razersupport.com).

### **SAFETY STATEMENT**

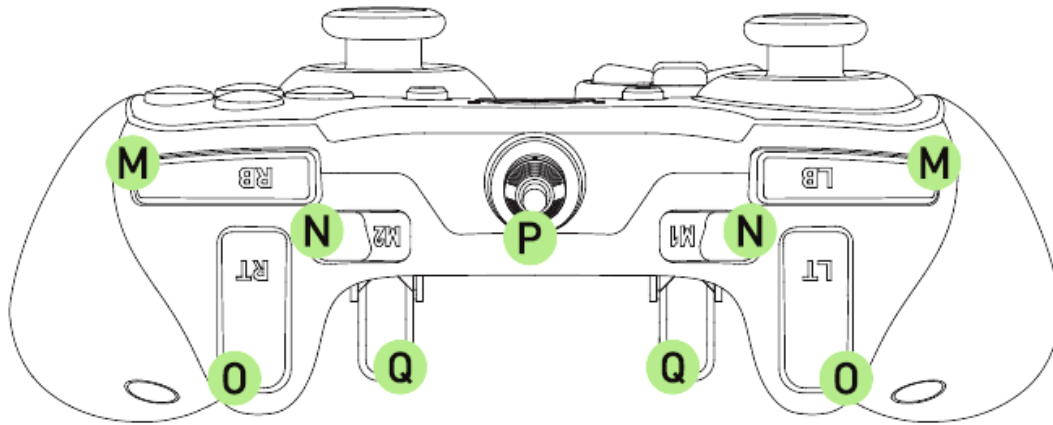
**IMPORTANT!** Before using the Xbox 360® with this product, read the Xbox 360® instruction manual for safety, health, and other information regarding the use of the Xbox 360®.

---

### 3. DEVICE LAYOUT



- A. Left Analog Stick
- B. Back Button
- C. Guide Button
- D. Start Button
- E. Face Buttons
- F. Directional Pad
- G. Right Analog Stick
- H. Profile Button
- I. LED Display
- J. Program Button
- K. 2.5mm Headset Jack
- L. Breakaway Cable



M. Bumper Buttons (LB / RB)

N. Multi-Function Buttons (M1 / M2)

O. Trigger Buttons (LT / RT)

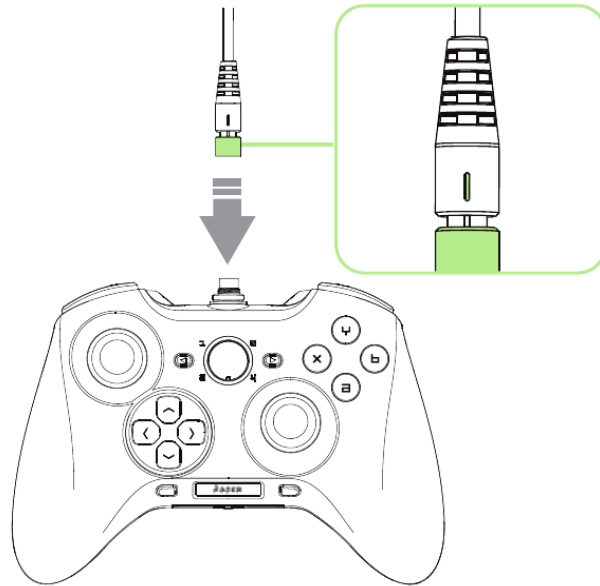
P. Detachable Cable Port

Q. Multi-Function Triggers (Left: M3 / M4 ; Right: M5 / M6)

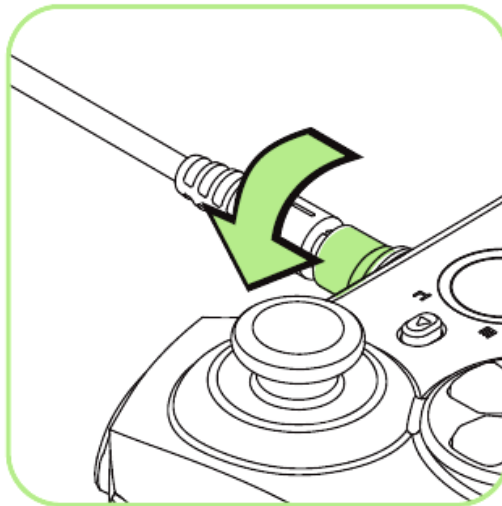
---

## 4. CONNECTING TO YOUR XBOX 360®

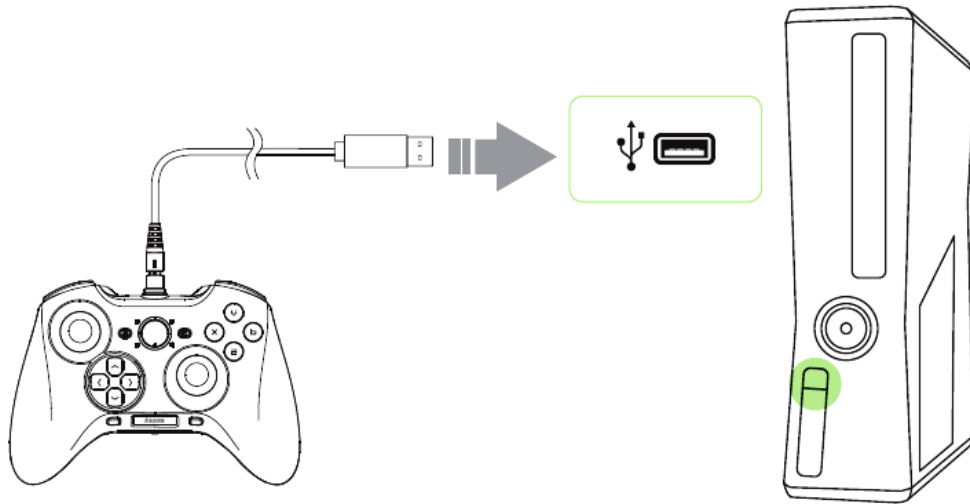
1. The Razer Sabertooth comes with a detachable cable for mobility. Ensure the marking is aligned when inserting the cable.



2. Twist the ring to secure it.



3. Plug your Razer Sabertooth into the front USB port of your Xbox 360® or Xbox 360® S.



**Optional: Attaching The Analog Stick Rubber Grip Caps**

The rubber grip caps can provide you with better control while protecting the analog sticks from wear and tear.

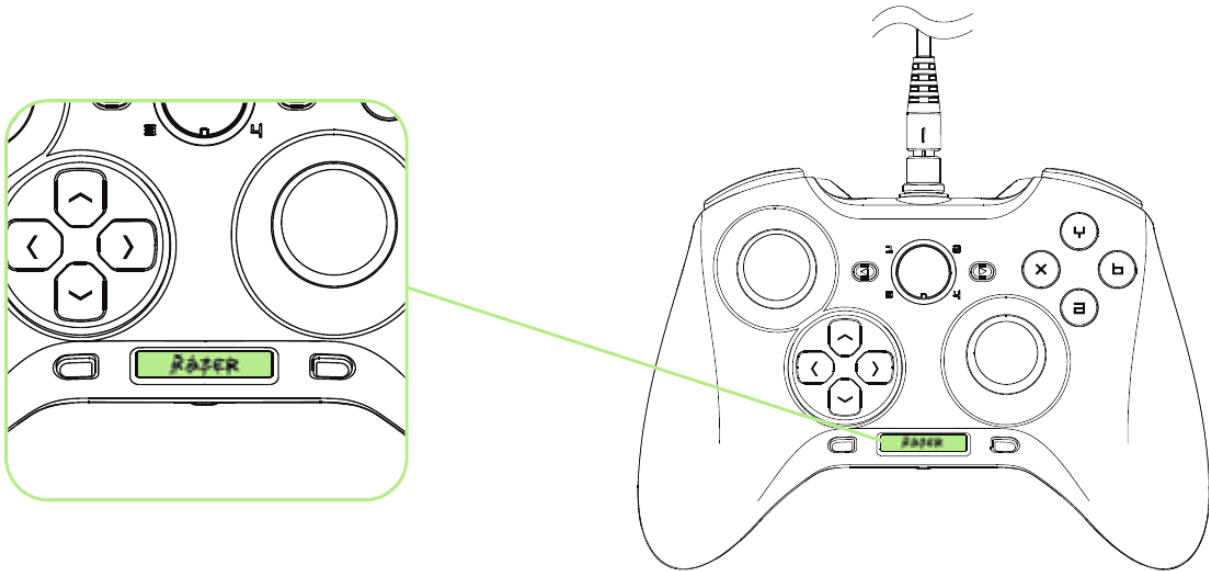




---

## 5. USING YOUR RAZER SABERTOOTH

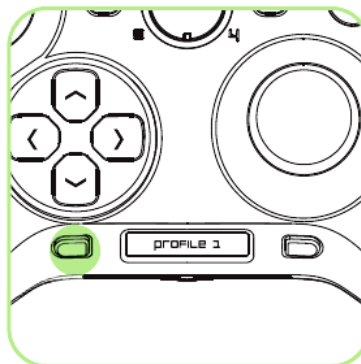
Your Razer Sabertooth works right out of the box as a standard Xbox 360® controller. For advanced users, you can access various features through the OLED screen, such as configuring the Multi-Function Triggers and Buttons, changing the analog sticks sensitivity, and more.



### **SELECTING A PROFILE**

The Razer Sabertooth has 2 profiles which you can use to store your customized settings.

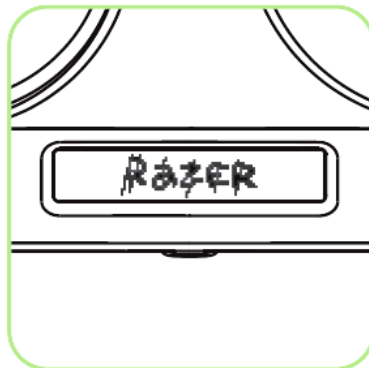
Press the Profile Button to cycle through the 2 profiles.



Press the Program Button to select your desired profile, and exit profile selection.



The selected profile is now active.



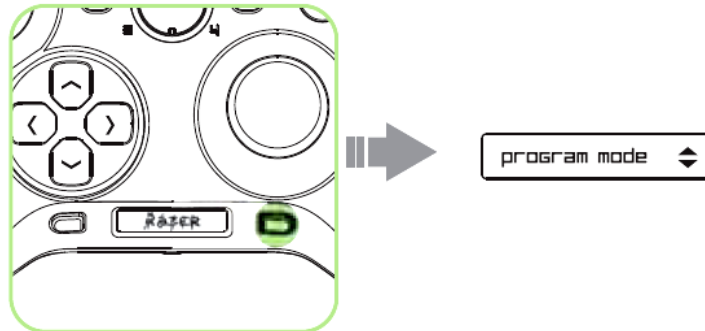
---

## 6. CONFIGURING YOUR RAZER SABERTOOTH

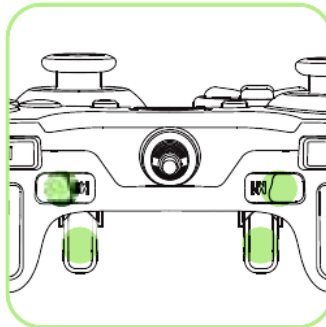
*Note: Any changes made during configuration will be saved to the active profile.*

### **CONFIGURING THE MULTI-FUNCTION TRIGGERS (MFT) AND BUTTONS (MFB)**

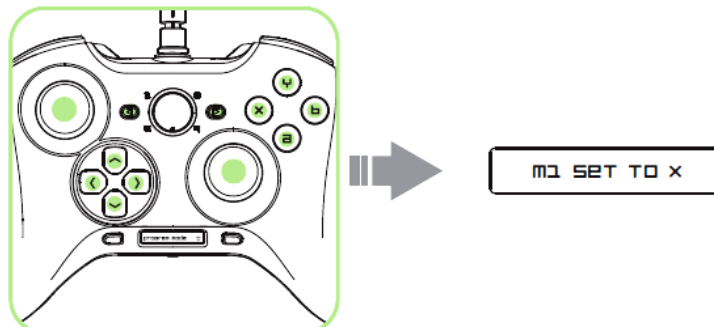
1. Press the Program Button to enter Program Mode.



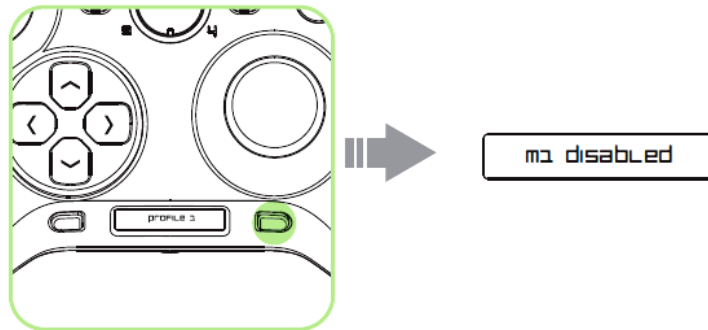
2. Press and hold the MFB or MFT you wish to configure.



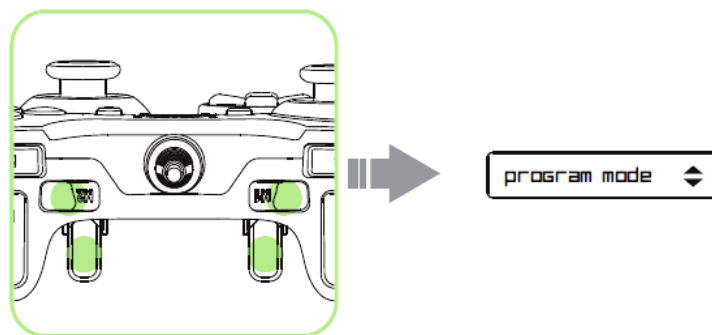
3. While holding on to the MFB or MFT, you can either:
  - A) Press any of these buttons to assign its function to the MFB or MFT.



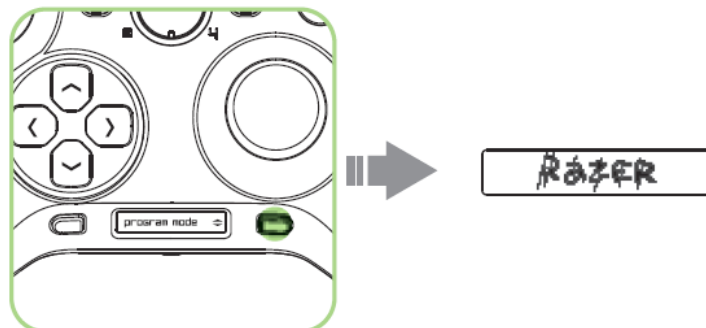
B) Press the program button to disable the MFB or MFT.



4. Release the MFB or MFT to save the setting and return to Program Mode. Repeat steps 2 and 3 until configuration is complete.



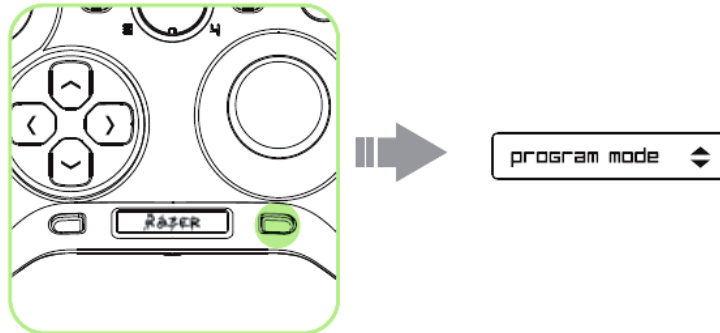
5. Press the Program Button to end configuration.



## CHANGING THE ANALOG STICK SENSITIVITY

*Note: Any changes made during configuration will be saved to the active profile.*

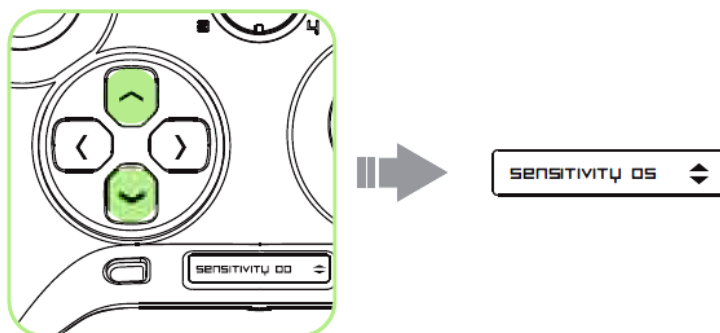
1. Press the Program Button to enter Program Mode.

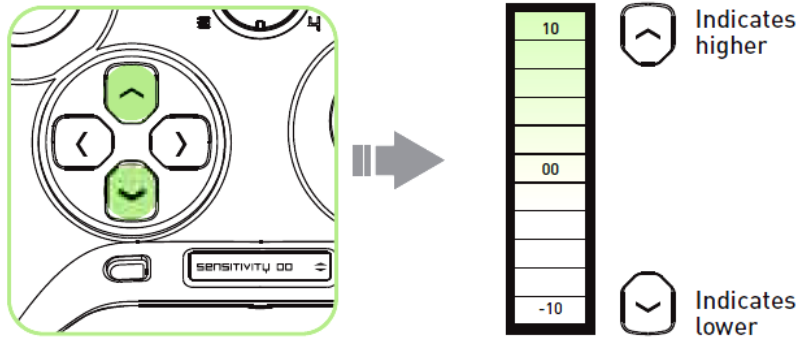


2. Press the analog stick you wish to configure. The current sensitivity setting will appear.

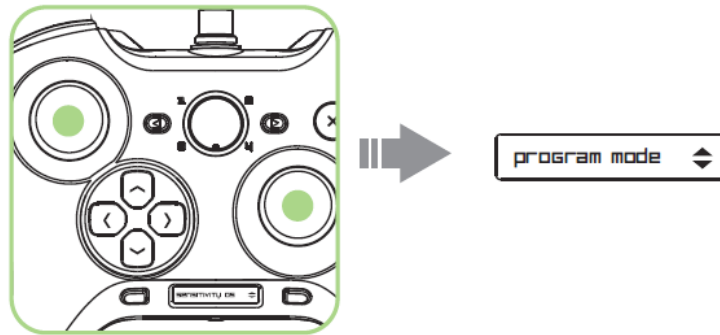


3. Press the up or down arrow to adjust the sensitivity.

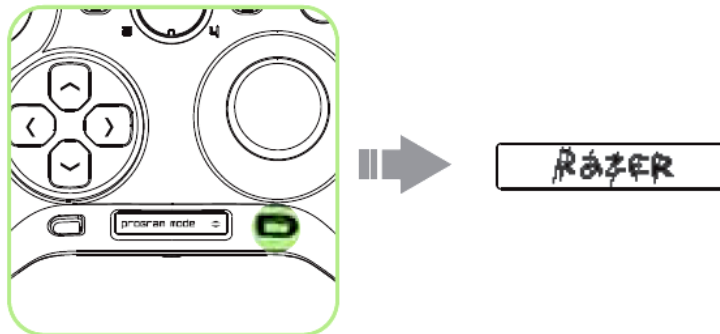




4. Press the analog stick again to save the setting and return to Program Mode.

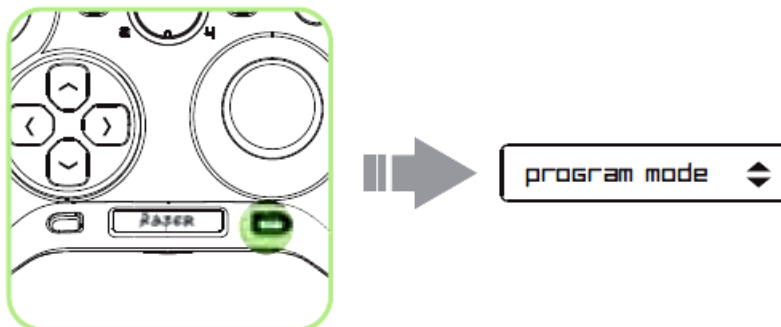


5. Press the Program Button to end configuration.

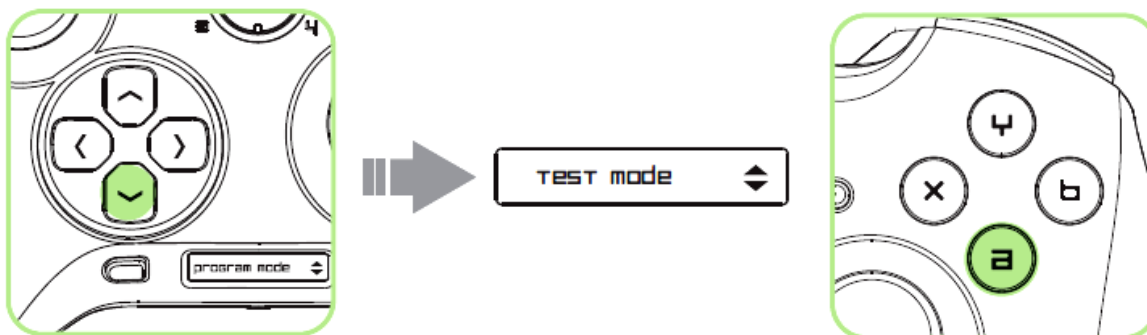


## TESTING THE ANALOG STICKS

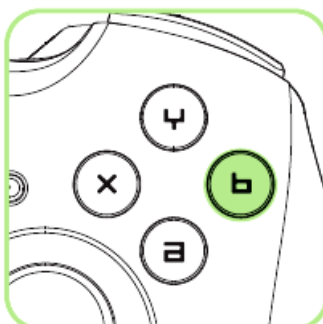
1. Press the Program Button to enter Program Mode.



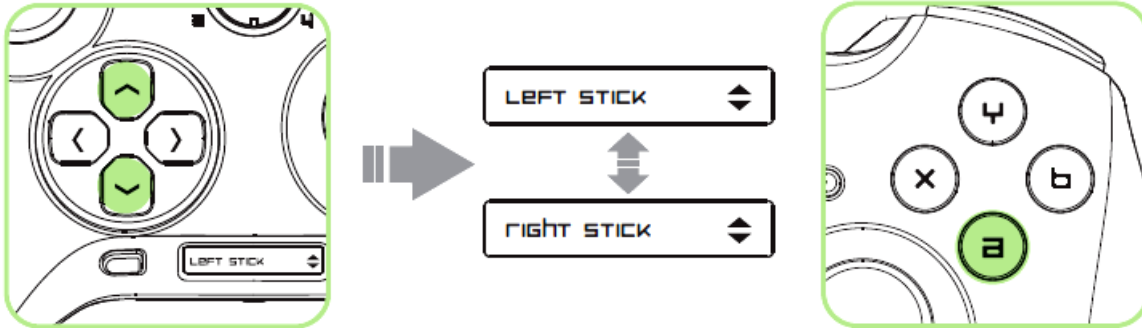
2. Press the down arrow once to access the test mode, and press "A" to confirm.



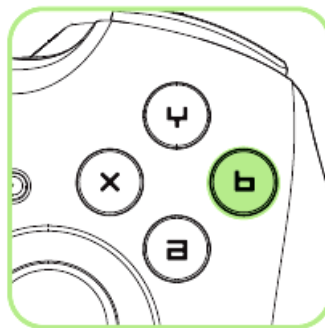
Otherwise, press "B" to return to previous menu.



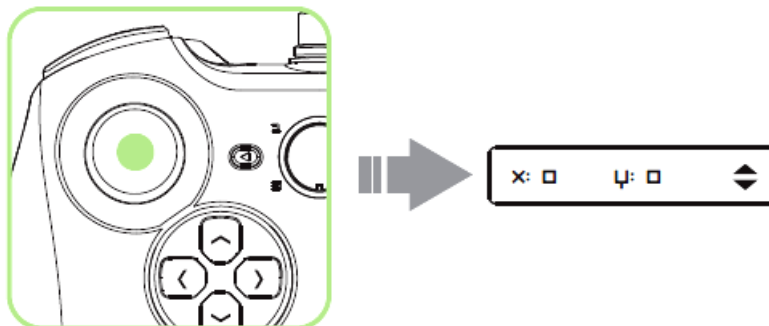
3. Press the up or down arrow to choose the analog stick to test, and press “A” to confirm.



Otherwise, press “B” to return to previous menu.

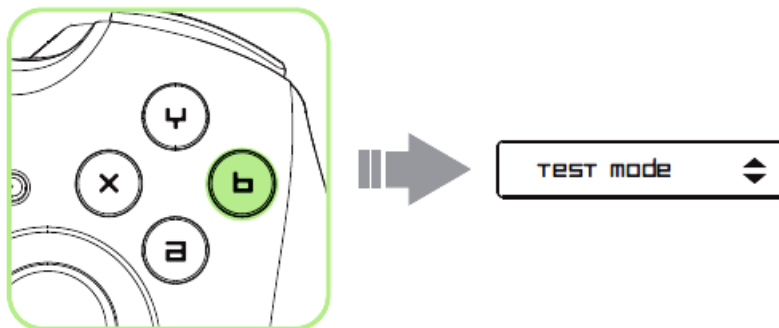


4. Move the selected analog stick to check the axis reading in real time.

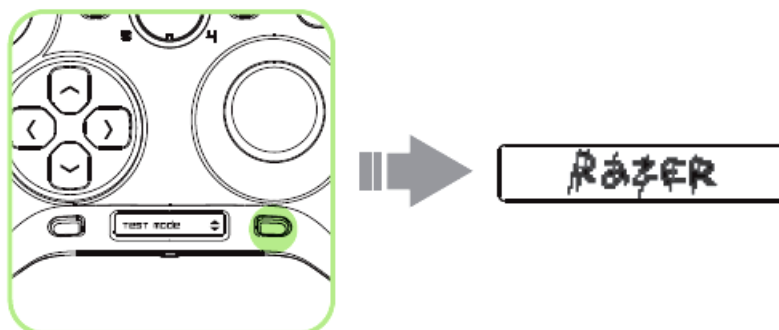




5. Press "B" twice to return to the main menu.

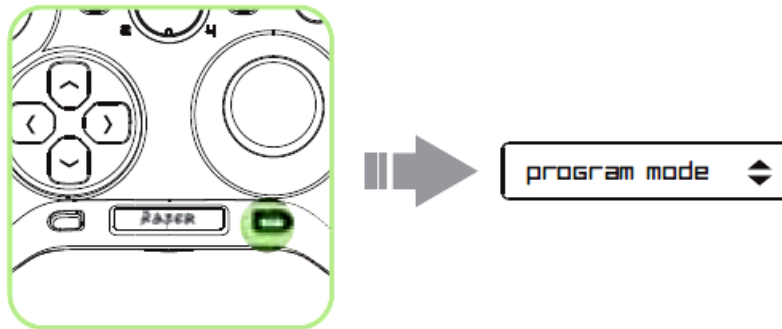


6. Press the Program Button to end the test.

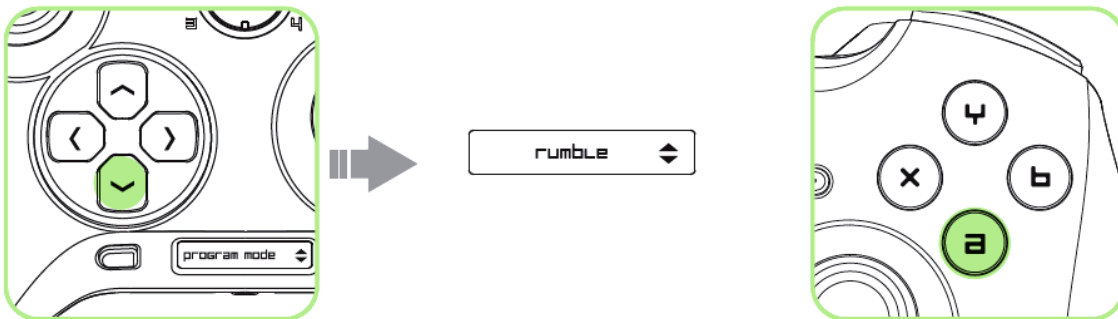


## DISABLING THE RUMBLE

1. Press the Program Button to enter Program Mode.



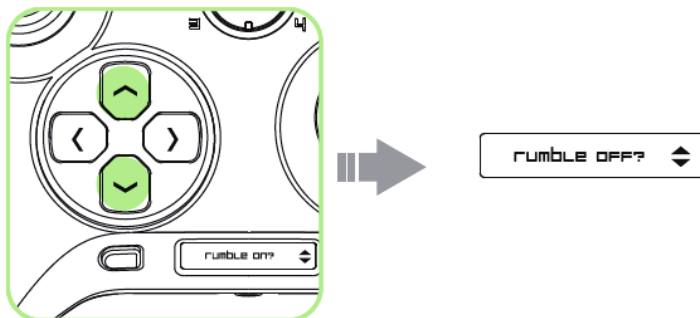
2. Press the down arrow twice to access the rumble option, and press "A" to confirm.



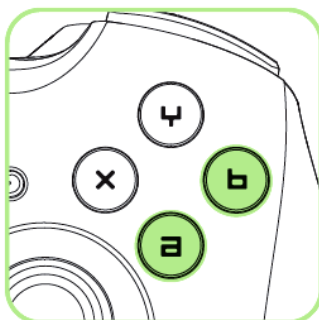
Otherwise, press "B" to return to the previous menu.



3. Press the up or down arrow to either turn the rumble on or off.

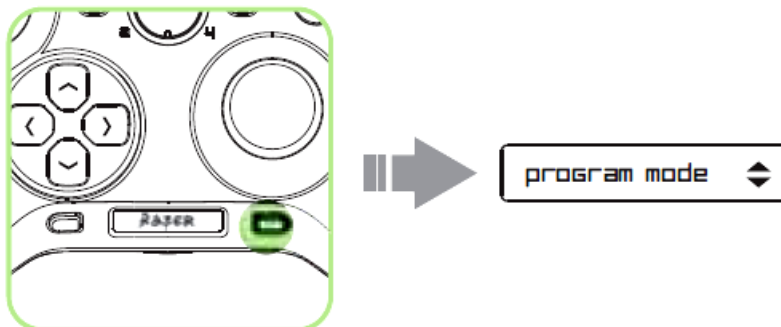


4. Press "A" to confirm or press "B" to cancel.

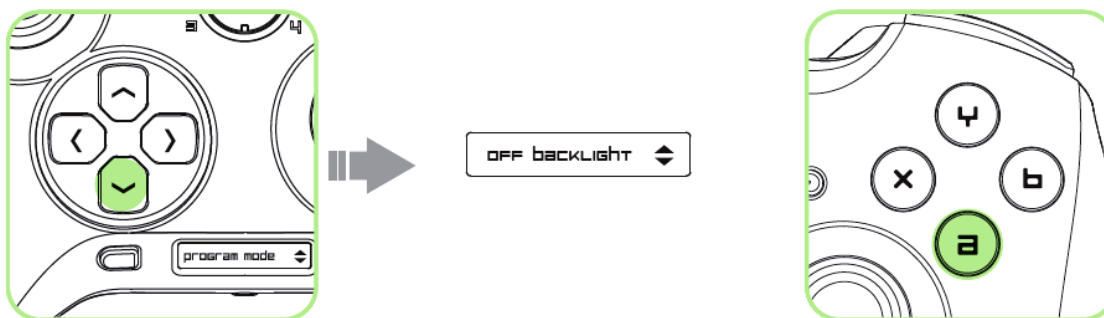


## TURNING THE BACKLIGHT OFF

1. Press the Program Button to enter Program Mode.



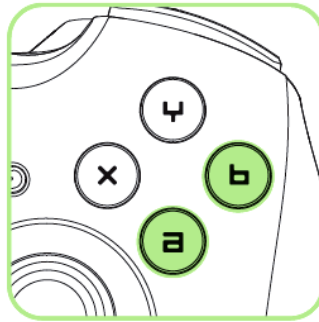
2. Press the down arrow thrice to access the "off backlight" option and press "A" to confirm.



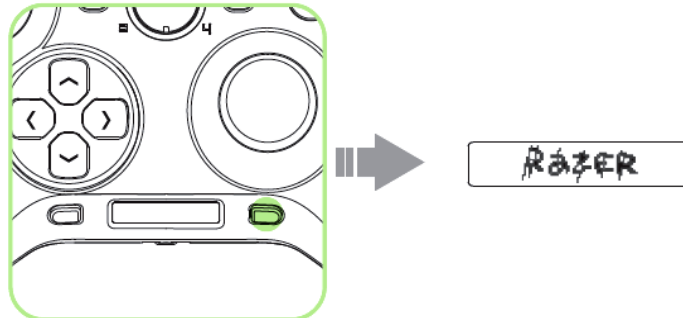
Otherwise, press "B" to return to the previous menu.



3. Press "A" to confirm or press "B" to cancel.

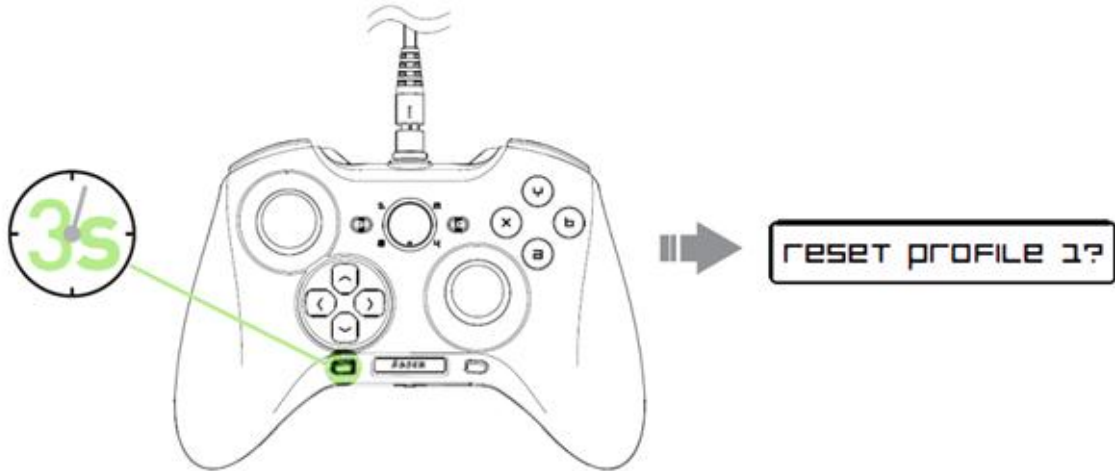


To turn the backlight on again, simply press the Program Button once.

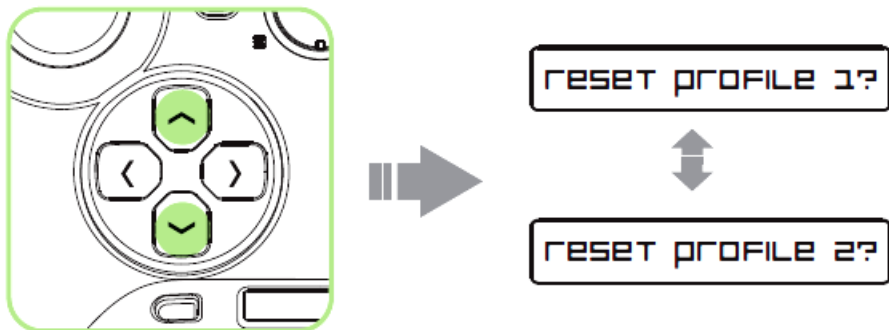


## RESETTING A PROFILE TO DEFAULT SETTINGS

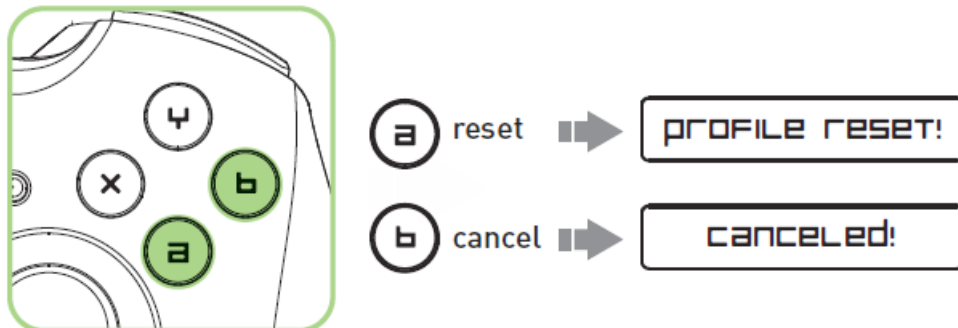
1. Hold the Profile Button for 3 seconds, until you see a reset option.



2. Press the up or down arrow to choose the profile you wish to reset.

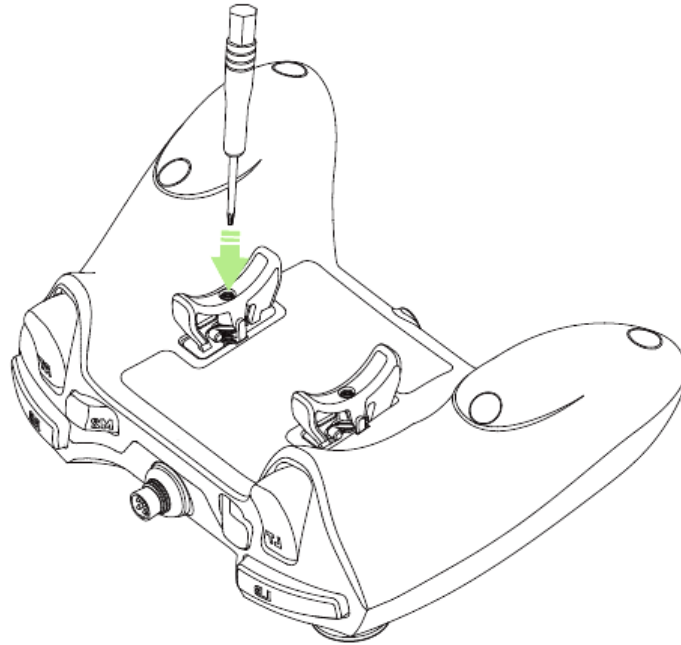


3. Press "A" to reset or "B" to cancel.

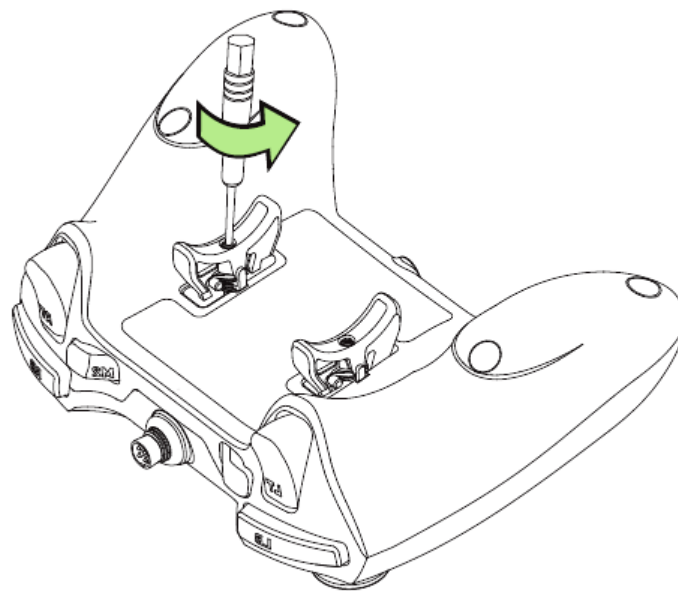


### ***Optional: Removing The Multi-Function Triggers***

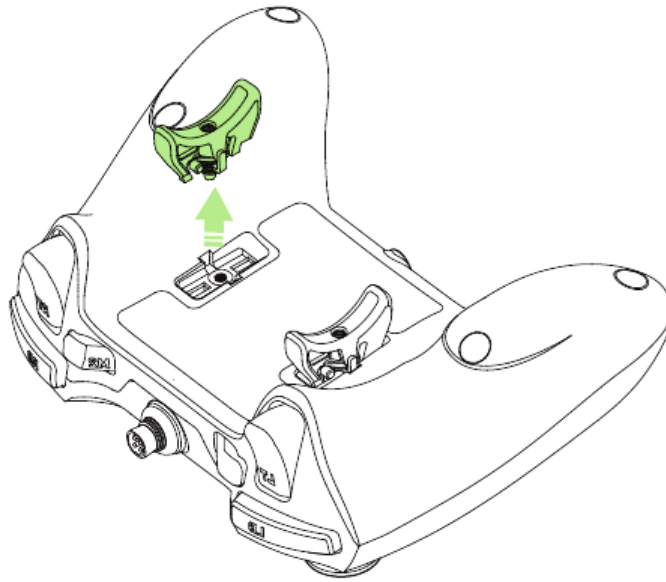
1. Position the tip of the screwdriver onto the head of the screw.



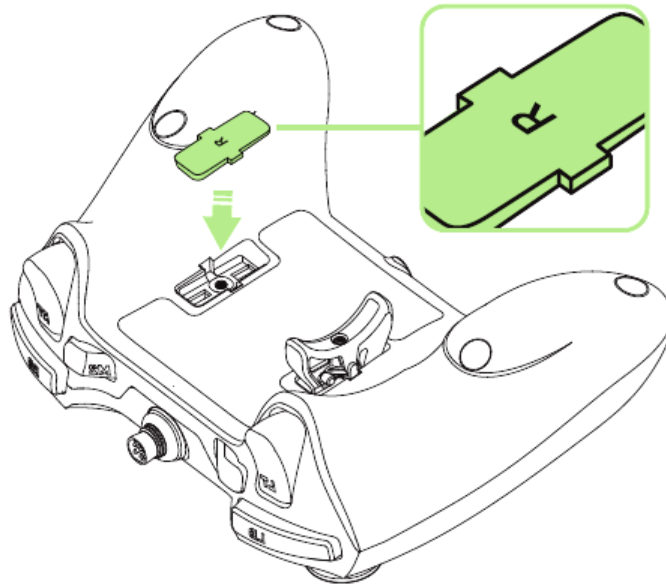
2. Turn the screwdriver counterclockwise until the screw is loose.



3. Gently remove the screw and the Multi-Function Triggers from the controller.



4. Place the rubber covers to secure the trigger slot.





---

## 7. SAFETY AND MAINTENANCE

### ***SAFETY GUIDELINES***

In order to achieve maximum safety while using your Razer Sabertooth, we suggest that you adopt the following guidelines:

1. Should you have trouble operating the device properly and troubleshooting does not work, unplug the device and contact the Razer hotline or go to [www.razersupport.com](http://www.razersupport.com) for support. Do not attempt to service or fix the device yourself at any time.
2. Do not take apart the device (doing so will void your warranty) and do not attempt to operate it under abnormal current loads.
3. Keep the device away from liquid, humidity or moisture. Operate the device only within the specific temperature range of 0°C (32°F) to 40°C (104°F). Should the temperature exceed this range, unplug and switch off the device in order to let the temperature stabilize to an optimal level.

### ***MAINTENANCE AND USE***

The Razer Sabertooth requires minimum maintenance to keep it in optimum condition. Once a month we recommend you unplug the device from the USB port and clean it using a soft cloth or cotton swab with a bit of warm water to prevent dirt buildup. Do not use soap or harsh cleaning agents.

---

## 8. LEGALESE

### ***COPYRIGHT AND INTELLECTUAL PROPERTY INFORMATION***

©2012 Razer USA Ltd. Patent Pending. All Rights Reserved. Razer™, the Razer Triple-Headed Snake logo, the Razer distressed word logo and other trademarks contained herein are trademarks or registered trademarks of Razer USA Ltd and/or its affiliated or associated companies, registered in the United States and/or other countries.

This product is manufactured under license from Microsoft Corporation. Microsoft, Kinect, Windows, Windows Vista, the Windows Logo, Xbox, Xbox LIVE, Xbox 360, and the Xbox logos are trademarks of the Microsoft group of companies.

Razer USA Ltd (“Razer”) may have copyright, trademarks, trade secrets, patents, patent applications, or other intellectual property rights (whether registered or unregistered) concerning the product in this Master Guide. Furnishing of this Master Guide does not give you a license to any such copyright, trademark, patent or other intellectual property right. The Razer Sabertooth (the “Product”) may differ from pictures whether on packaging or otherwise. Razer assumes no responsibility for such differences or for any errors that may appear. Information contained herein is subject to change without notice.

### ***LIMITED PRODUCT WARRANTY***

For the latest and current terms of the Limited Product Warranty, please visit [www.razerzone.com/warranty](http://www.razerzone.com/warranty).

### ***LIMITATION OF LIABILITY***

Razer shall in no event be liable for any lost profits, loss of information or data, special, incidental, indirect, punitive or consequential or incidental damages, arising in any way out of distribution of, sale of, resale of, use of, or inability to use the Product. In no event shall Razer’s liability exceed the retail purchase price of the Product.

### ***COSTS OF PROCUREMENT***

For the avoidance of doubt, in no event will Razer be liable for any costs of procurement unless it has been advised of the possibility of such damages, and in no case shall Razer be liable for any costs of procurement liability exceeding the retail purchase price of the Product.

### ***GENERAL***

These terms shall be governed by and construed under the laws of the jurisdiction in which the Product was purchased. If any term herein is held to be invalid or unenforceable, then such term (in so far as it is invalid or unenforceable) shall be given no effect and deemed to be excluded without invalidating any of the remaining terms. Razer reserves the right to amend any term at any time without notice.